

USB 3.0 to Gigabit Ethernet Adapter with USB Port - Black/White

USB31000SPTB

USB31000SPTW



*actual product may vary from photos

DE: Bedienungsanleitung - de.startech.com

FR: Guide de l'utilisateur - fr.startech.com

ES: Guía del usuario - es.startech.com

IT: Guida per l'uso - it.startech.com

NL: Gebruiksaanwijzing - nl.startech.com

PT: Guia do usuário - pt.startech.com

For the most up-to-date information, please visit: www.startech.com

FCC Compliance Statement

This equipment has been tested and found to comply with the limits for a Class B digital device, pursuant to part 15 of the FCC Rules. These limits are designed to provide reasonable protection against harmful interference in a residential installation. This equipment generates, uses and can radiate radio frequency energy and, if not installed and used in accordance with the instructions, may cause harmful interference to radio communications. However, there is no guarantee that interference will not occur in a particular installation. If this equipment does cause harmful interference to radio or television reception, which can be determined by turning the equipment off and on, the user is encouraged to try to correct the interference by one or more of the following measures:

- Reorient or relocate the receiving antenna.
- Increase the separation between the equipment and receiver.
- Connect the equipment into an outlet on a circuit different from that to which the receiver is connected.
- Consult the dealer or an experienced radio/TV technician for help.

Use of Trademarks, Registered Trademarks, and other Protected Names and Symbols

This manual may make reference to trademarks, registered trademarks, and other protected names and/or symbols of third-party companies not related in any way to StarTech.com. Where they occur these references are for illustrative purposes only and do not represent an endorsement of a product or service by StarTech.com, or an endorsement of the product(s) to which this manual applies by the third-party company in question. Regardless of any direct acknowledgement elsewhere in the body of this document, StarTech.com hereby acknowledges that all trademarks, registered trademarks, service marks, and other protected names and/or symbols contained in this manual and related documents are the property of their respective holders.

Table of Contents

Product Diagram	1
Front View	1
Side View	1
Introduction	2
Packaging Contents	2
System Requirements.....	2
Installation	3
Hardware Installation	3
Driver Installation.....	3
Verifying Installation.....	4
Specifications.....	5
Technical Support	6
Warranty Information.....	6

Product Overview

Front View



RJ45

Side View



USB 3.0

Introduction

The USB31000SPTB USB 3.0 to Gigabit Ethernet Adapter lets you add a Gigabit network port to your laptop or Ultrabook™ computer through a USB 3.0 port, and features an integrated USB 3.0 pass-through port that keeps your USB port available for use with other peripherals. Each RJ45 port supports 10/100/1000 Mbps Ethernet and is fully compatible with IEEE 802.3i/u/ab standards.

An ideal replacement LAN adapter or laptop accessory, this compact USB 3.0 NIC leverages the 5 Gbps speed of USB 3.0 to provide full gigabit bandwidth and also offers backward compatibility with USB 2.0 systems (speed limited by USB bus).

The adapter supports features such as IPv4/IPv6 packet Checksum Offload Engine (COE) and TCP large send offload to reduce the load on your CPU. Jumbo Frames, full-duplex operation with 802.3x flow control and VLAN tagging are also supported, making this an efficient and full-featured USB network adapter.

Backed by a StarTech.com 2-year warranty and free lifetime technical support.

Packaging Contents

- 1 x USB 3.0 Network Adapter
- 1 x Driver CD
- 1 x Instruction Manual

System Requirements

- Available USB port
- Windows® 8 (32/64bit), 7 (32/64), Vista(32/64), XP(32/64), Windows® Server 2008 R2, 2003(32/64), Mac OS 10.6 - 10.8, Linux kernel 2.6.25 ~ 3.5.0

Installation

Hardware Installation

1. Connect the USB 3.0 Network Adapter to an available USB port.
NOTE: If connected to a USB 2.0 host port, the pass-through port will only operate at USB 2.0 speeds and network performance may be limited.
2. The host computer's operating system should detect the hub immediately and automatically install the USB drivers.
3. Once installation is complete, USB 1.x/2.0/3.0 devices should be able to be connected to the hub and recognized.

Driver Installation

NOTE: The drivers for the USB Hub will be automatically installed by the host computer's operating system. Only the driver for the Ethernet port needs to be installed.

Windows / Mac

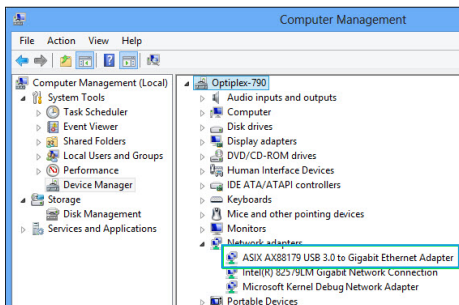
1. Insert the provided CD into your DVD/CD-ROM drive.
2. Open the contents of the CD/DVD drive that the CD is in and browse to the appropriate folder for your operating system.
3. Run the "Setup.exe" (Windows) application to launch the driver installation program (mount "AX88179_178A.dmg" and run "AX88179_178A.dmg" for Mac OS), and follow the on-screen instructions to complete the install

NOTE: You may be prompted to restart at the end of the install

Verifying Installation

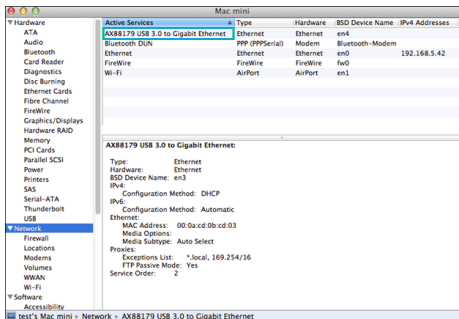
Windows

1. Open the Device Manager by right-clicking on Computer, and then select Manage. In the new Computer Management window, select Device Manager from the left window panel (For Windows 8, open the Control Panel and select Device Manager).
2. Expand the “Network adapters” section. On a successful install, you should see the following devices installed with no exclamation points or question marks.



Mac OS

1. Open the System Profiler by clicking the Apple symbol in the top left corner, selecting About this Mac, then select System Report
2. Expand the “Network” section. With the adapter connected, you should see the following devices in the list.



Specifications

Host Interface	USB 3.0
Connectors	1 x RJ-45 Female 1 x USB 3.0 type A Male 1 x USB 3.0 type A Female
Maximum Data Transfer Rate	USB 3.0: 5 Gbps LAN: 2 Gbps (per port; Full-Duplex)
Supported Standards	IEEE802.3i, IEEE 802.3u, IEEE 802.3ab, IEEE 802.3az
Supported Network Link Speeds	10/ 100/ 1000 Mbps
Ethernet Full Duplex Support	Yes
Auto MDIX	Yes
Power	USB-Powered
Enclosure Material	Plastic
Operating Temperature	0°C to 50°C (32°F to 122°F)
Storage temperature	-20°C to 60°C (-4°F to 140°F)
Dimensions	82 x 35 x 17 mm
Humidity	5~85% RH
Weight	50g

Technical Support

StarTech.com's lifetime technical support is an integral part of our commitment to provide industry-leading solutions. If you ever need help with your product, visit www.startech.com/support and access our comprehensive selection of online tools, documentation, and downloads.

For the latest drivers/software, please visit www.startech.com/downloads

Warranty Information

This product is backed by a two year warranty.

In addition, StarTech.com warrants its products against defects in materials and workmanship for the periods noted, following the initial date of purchase. During this period, the products may be returned for repair, or replacement with equivalent products at our discretion. The warranty covers parts and labor costs only. StarTech.com does not warrant its products from defects or damages arising from misuse, abuse, alteration, or normal wear and tear.

Limitation of Liability

In no event shall the liability of StarTech.com Ltd. and StarTech.com USA LLP (or their officers, directors, employees or agents) for any damages (whether direct or indirect, special, punitive, incidental, consequential, or otherwise), loss of profits, loss of business, or any pecuniary loss, arising out of or related to the use of the product exceed the actual price paid for the product. Some states do not allow the exclusion or limitation of incidental or consequential damages. If such laws apply, the limitations or exclusions contained in this statement may not apply to you.

Hard-to-find made easy. At StarTech.com, that isn't a slogan. It's a promise.

StarTech.com is your one-stop source for every connectivity part you need. From the latest technology to legacy products — and all the parts that bridge the old and new — we can help you find the parts that connect your solutions.

We make it easy to locate the parts, and we quickly deliver them wherever they need to go. Just talk to one of our tech advisors or visit our website. You'll be connected to the products you need in no time.

Visit www.startech.com for complete information on all StarTech.com products and to access exclusive resources and time-saving tools.

StarTech.com is an ISO 9001 Registered manufacturer of connectivity and technology parts. StarTech.com was founded in 1985 and has operations in the United States, Canada, the United Kingdom and Taiwan servicing a worldwide market.

Reviews

Share your experiences using StarTech.com products, including product applications and setup, what you love about the products, and areas for improvement.

StarTech.com Ltd.	StarTech.com LLP	StarTech.com Ltd.	StarTech.com Ltd.
45 Artisans Crescent	4490 South Hamilton Road	Unit B, Pinnacle 15 Gowerton Road	Siriusdreef 17-27
London, Ontario	Groveport, Ohio	Brackmills,	2132 WT
N5V 5E9	43125	Northampton	Hoofddorp
Canada	U.S.A.	NN4 7BW	The Netherlands
		United Kingdom	

FR: fr.startech.com

ES: es.startech.com

IT: it.startech.com

DE: de.startech.com

NL: nl.startech.com

JP: jp.startech.com