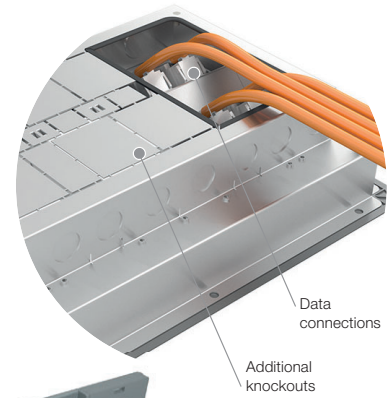


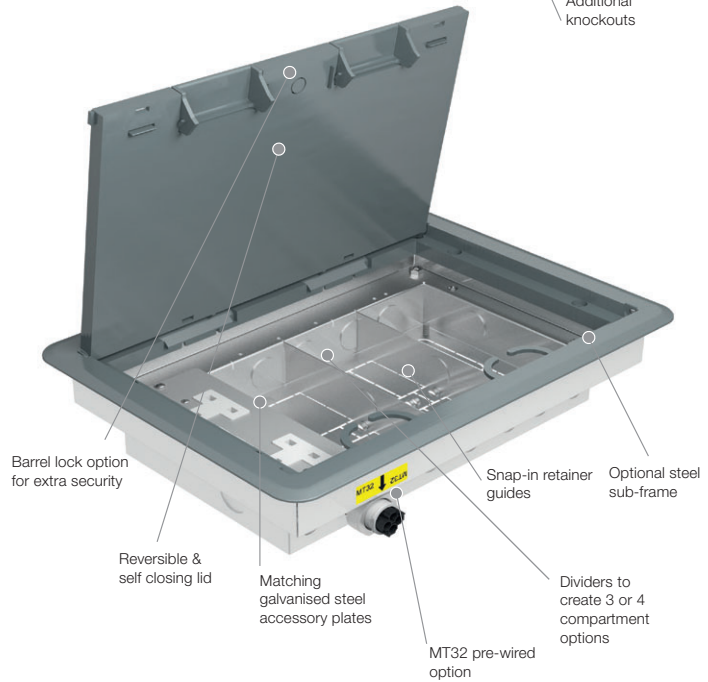
RAISED FLOOR BOXES AND GROMMETS



A high quality range of raised floor boxes to provide power and data to desks within the modern office environment. Available as standard or heavy duty versions, boxes are supplied with dividers for quick and easy configuration as either a 3 or 4 compartment box.

Product information

- Standard depth 83mm
- Supplied with dividers to create 3 or 4 compartment box
- Two earth fixing points for flexible positioning of sockets
- 3mm thick medium load plate
- Fixings are pre-punched for quick and easy installation
- Supplied with metal screws to attach trim to box for a secure fix
- Steel sub-frame option for heavy traffic and fine adjustment to allow for uneven flooring
- Supplied with two snap-in cable retainers/guides
- Lid recess to suit up to 6mm carpet tile
- Reversible and self closing lid for extra safety and security
- Barrel lock option available for extra security
- Knockouts in the base for better access
- Data connections to meet data cable specifications



Standard finish
GY
GY: Grey RAL7011 (floor box trim)

Designed and manufactured to
 BS EN 61534-22:2014+A11:2021
 BS EN 60670-1:2005+A1:2013
 BS EN 60670-23:2008
 BS EN 50085-14:2005+A1:2013
 BS EN 50085-2-2:2008

UNDERFLOOR TO DESK SOLUTIONS

MT32 pre-wired floor boxes



3 compartment floor box (terminal)
357 x 257 x 83mm

code	description	pack
UM1010	1 x 2 gang Std	1
UM1020	2 x 2 gang Std	1
UM1110	1 x 2 gang CE	1
UM1120	2 x 2 gang CE	1



4 compartment floor box (terminal)
357 x 257 x 83mm

code	description	pack
UM5020	2 x 2 gang with offset sockets	1



3 compartment floor box (terminal) with RCD sockets
357 x 257 x 83mm

code	description	pack
UM1410	1 x 2 gang RCD Std	1
UM1420	2 x 2 gang RCD Std	1
UM1610	1 x 2 gang RCD CE	1
UM1620	2 x 2 gang RCD CE	1

Please see page 106 for the full range of accessory plates

MT32 components



***Female adaptors 220mm tail - fits 20mm knockout**

code	description	pack
UA7134	3 pole (female) black	1
UA7144	4 pole (female) black	1

*For adapting additional equipment and floor boxes to modular system.



Tap-off (Standard) to MT32 connector

code	length	rating	pack
UN8113	3m	32Amp unfused	1
UN8115	5m	32Amp unfused	1
UN8123	3m	13Amp fused	1
UN8125	5m	13Amp fused	1



Tap-off (Clean Earth) to MT32 connector

code	length	rating	pack
UN8213	3m	32Amp unfused	1
UN8215	5m	32Amp unfused	1
UN8223	3m	13Amp fused	1
UN8225	5m	13Amp fused	1

Pre-wired floor boxes



3 compartment standard pre-wired box with 3m tap-off 357 x 257 x 83mm

code	description	pack
UPW400	1 x 2 gang Std	1
UPW420	2 x 2 gang Std	1



3 compartment CE pre-wired box with 3m tap-off 357 x 257 x 83mm

code	description	pack
UPW405	1 x 2 gang CE	1
UPW425	2 x 2 gang CE	1



4 compartment standard pre-wired box with 3m tap-off 357 x 257 x 83mm

code	description	pack
UPW410	1 x 2 gang Std	1
UPW430	2 x 2 gang Std	1



4 compartment CE pre-wired box with 3m tap-off 357 x 257 x 83mm

code	description	pack
UPW415	1 x 2 gang CE	1
UPW435	2 x 2 gang CE	1

Raised floor boxes



Empty floor box

code	description	pack
UM1000	Plastic lid & trim	1
UM1500	Steel lid & trim	1



Floor box pre-fitted with 3 x UP632 plates

code	description	pack
UM3010	3 x UP632	1

Ready to accept standard twin gang sockets.
Please note to avoid clearance and lid closing issues we recommend a 9.5mm maximum depth of socket plate be used.

Accessories



Sub-frame assembly

code	description	pack
UMSF1		1



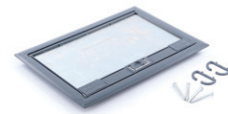
Lock kit

code	description	pack
UMLK1		1



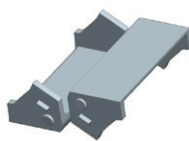
Raised floor box trim

code	description	pack
UMLD4	Plastic	1



Raised floor lid assembly

code	description	pack
UMLD1	Plastic	1
UMLD3	Steel	1



Replacement cable flaps pack

code	description	pack
UMCB1		1

For plastic lid assembly only

Floor grommets



Floor grommet

code	description	pack
UTG1BK	without foam insert	1
UTG1GY	without foam insert	1



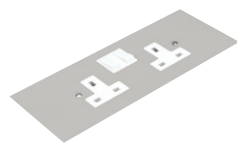
Floor power grommet

code	description	pack
UPG1BK	with foam insert	1
UPG1GY	with foam insert	1

Cut out size for above grommets Ø125mm

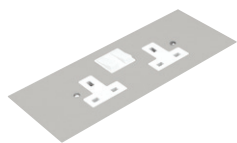
Please note the floor box grommets are available in black BK (RAL9004) and grey GY (RAL7037).

ACCESSORY PLATES



13Amp 2 gang DP/TE switched socket

code	description	pack
UP651	3 comp	1
UP751	4 comp	1



13Amp 2 gang DP/TE switched socket clean earth

code	description	pack
UP653	3 comp	1
UP753	4 comp	1



Single plate 13Amp 2x2 gang DP/TE switched socket

code	description	pack
UP751D	4 comp	1
UP753D	4 comp CE	1



13Amp 2 gang DP/RCD switched socket

code	description	pack
UP660	3 comp Std	1
UP663	3 comp CE	1
UP760	4 comp Std	1
UP763	4 comp CE	1

Not suitable for use with in-screed system.

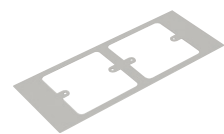


Plate to accept 2 x 1 gang accessory (M3.5 x 60.3mm)

code	description	pack
UP633	3 comp	1

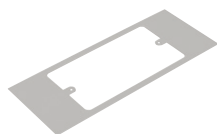


Plate to accept 1 x 2 gang accessory (M3.5 x 120.3mm)

code	description	pack
UP632	3 comp	1

Plate dimensions

3 compartment = 185 x 95mm
4 compartment = 185 x 71mm

Plate material

Plates are manufactured from plain galvanised steel to match floor boxes.

Important

Design of leads, plugs and sockets can vary so thought is required when configuring plates to avoid the clashing of cables which could prevent the floor box lid from closing.



Plate to accept 2 x 1 gang accessory (M3.5 x 60.3mm)

code	description	pack
UP733	4 comp	1

Accessory overlaps adjacent plates



Plate to accept 1 x 2 gang accessory (M3.5 x 120.3mm)

code	description	pack
UP732	4 comp	1

Accessory overlaps adjacent plates



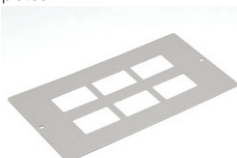
Blank plate

code	description	pack
UP621	3 comp	1
UP721	4 comp	1



Euro plate and collar 2 gang

code	description	pack
UP615	3 comp	1
UP715	4 comp	1



Data/voice plate 6 x RJ45

code	description	pack
UP612	3 comp	1
UP712	4 comp	1

6 x 37mm x 22mm cut outs



Data/voice plate 4 x RJ45

code	description	pack
UP610	3 comp	1
UP710	4 comp	1

4 x 37mm x 22mm cut outs



Data wave plate 4 x RJ45

code	description	pack
UP617	3 comp	1

4 x 37mm x 22mm cut outs



Data wave plate 2 x RJ45

code	description	pack
UP717	4 comp	1

2 x 37mm x 22mm cut outs



Black 6C blank plate

code	description	pack
UDC1000		1



Black Cat 6 IDC data module

code	description	pack
UDC1001		1



Black Cat 6 module assembly

code	length	pack
UDC1002	3m	1
UDC1003	5m	1



300mm launch lead F/F

code	description	pack
UDC1004	VGA	1
UDC1005	USB	1
UDC1006	HDMI	1
UDC1007	Jack - 3.5mm	1