

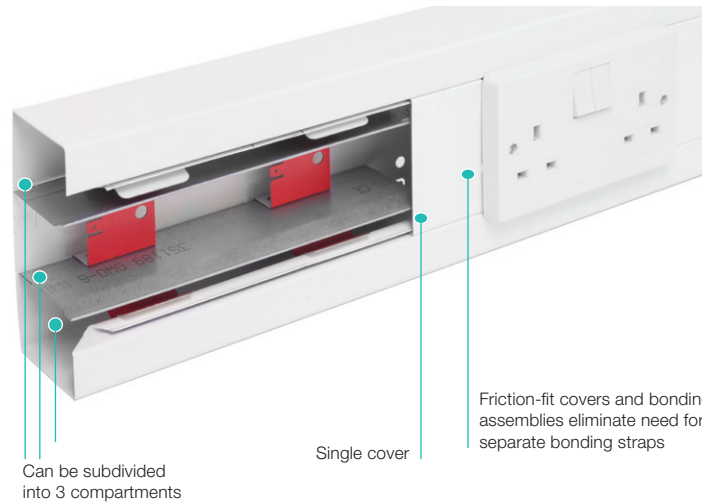
SYSTEM 130 COMPLIANT UP TO CAT 7A

Steel System 130 is stylish compact pre galvanised trunking system with extra depth and a resilient white powder-coat finish that helps to prevent smearing and marking.

Product information

- 130 x 63mm
- 1 main compartment
- Can be subdivided
- Suitable for dado application
- Compliant up to Cat 7a

Note: Allowance must be made for earthing the trunking system to comply with the current version of the BS 7671 Wiring Regulations.



STEEL TRUNKING SYSTEMS **Basic components**



Base unit

| code | size | pack |
|--------|------------|--------|
| 351215 | 130 x 63mm | 1 x 2m |



Cover

| code | length | pack |
|--------|--------|-----------|
| 351210 | 1m | 10 x 1m |
| 351230 | 1.5m | 10 x 1.5m |

| Standard Colour |
|--------------------|
| WH |
| WH: White RAL 9010 |

Please note: our steel systems may be subject to lead times. For further information please call the Technical Team on +44 (0)1424 856688.



External tolerance sleeve

| code | width | pack |
|--------|-------|------|
| 351075 | 40mm | 5 |



External joint cover

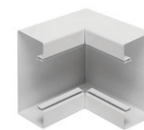
| code | width | pack |
|--------|-------|------|
| 351105 | 25mm | 5 |



End cap

| code | pack |
|--------|------|
| 351045 | 5 |

Recommended to use with LBS3



Internal bend base

| code | pack |
|--------|------|
| 351275 | 1 |



External bend base

| code | pack |
|--------|------|
| 351305 | 1 |



External bend cover

| code | pack |
|--------|------|
| 351240 | 1 |



Universal int/ext bend

| code | pack |
|--------|------|
| 351175 | 1 |

Fully adjustable to suit internal or external corners which are not exactly 90 degrees



Flat angle base - up/down

| code | pack |
|--------|------|
| 351335 | 1 |



Flat angle cover

| code | pack |
|--------|------|
| 351260 | 1 |



Flat tee base - up/down

| code | pack |
|--------|------|
| 351395 | 1 |

Components



Dividing fillets

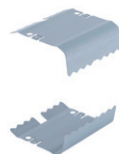
| code | size | pack |
|--------|------|---------|
| 351189 | 1m | 10 x 1m |



Universal multi-purpose clip

| code | pack |
|--------|------|
| 351319 | 1 |

Please note: 3 Universal multi-purpose clips are required per length if using dividing fillets.



Internal coupling/bonding set

| code | pack |
|--------|------|
| 351525 | 10 |

Please note: A pack of 10 consists of 10 complete internal couplers



End cap bonding strap

| code | pack |
|------|------|
| LBS3 | 1 |

Touch-up paint RAL 9010

| code | size | pack |
|--------|------|------|
| 351029 | 25ml | 1 |

Accessories

Boxes



1 gang accessory box

| code | depth | pack |
|----------|-------|------|
| RSSB10WH | 40mm | 12 |



2 gang accessory box

| code | depth | pack |
|----------|-------|------|
| RSSB20WH | 40mm | 6 |



Cover spacer for accessory boxes

| code | width | pack |
|---------|-------|------|
| WG01085 | 50mm | 10 |

NEW

Metal boxes

1 gang box

| code | depth | pack |
|--------|-------|------|
| 820329 | 35mm | 1 |

2 gang box

| code | depth | pack |
|--------|-------|------|
| 820339 | 35mm | 1 |