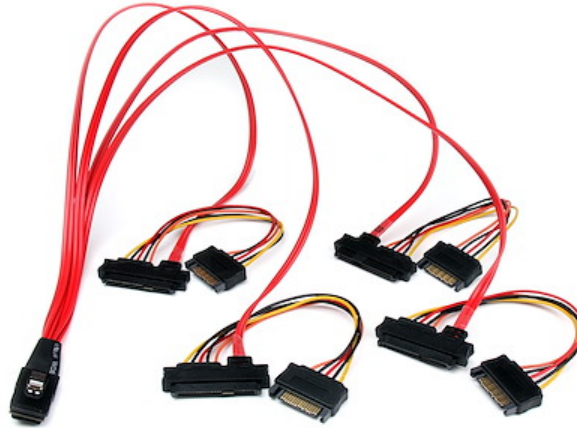


50cm Internal Serial Attached SCSI Mini SAS Cable - SFF8087 to 4x SFF8482

Product ID: SAS808782P50



The SAS808782P50 Mini SAS to SAS cable (50cm) features one 36-pin SFF-8087 plug, which fans out to four individual 29-pin SFF-8482 receptacles, providing a reliable solution for connecting multiple SAS HDD drives (with both data and power) to a single mini SAS controller connection.

This high quality internal Mini SAS to SAS cable is designed for long-lasting dependability and reliable performance and is backed by our lifetime warranty.

Certifications, Reports and Compatibility

Applications

- Connects four SAS hard drives to a SAS controller
- SFF-8482 Connector will support SAS and SATA Hard Drives

Features

- Supports up to 6Gbps throughput per channel
- 4x SFF-8482 connections, each with data and power
- 1x SFF-8087 connector

Connector(s)

Warranty

Lifetime

Connector A	SFF-8087 (36 Pin, Internal Mini-SAS)
Connector B	SATA Power (15 pin)
	SFF-8482 (29 pin, Data & Power, Internal SAS)

Physical Characteristics

Color	Red
Wire Gauge	30 AWG
Cable Length	19.7 in [50 cm]
Product Length	19.7 in [50 cm]
Product Width	2.0 in [50 mm]
Product Height	0.6 in [15 mm]
Weight of Product	3.3 oz [94 g]

Packaging Information

Package Quantity	1
Package Length	5.5 in [14 cm]
Package Width	2.4 in [60 mm]
Package Height	2.4 in [60 mm]
Shipping (Package) Weight	3.5 oz [98 g]

What's in the Box

Included in Package	50cm Serial Attached SCSI SAS Cable - SFF8087 to 4x SFF8482
---------------------	---

**Product appearance and specifications are subject to change without notice.*

