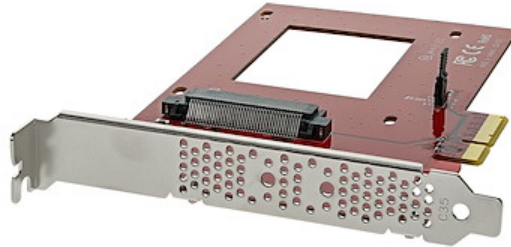


U.2 to PCIe Adapter for 2.5" U.2 NVMe SSD - SFF-8639 - x4 PCI Express 3.0

**Product ID:** PEX4SFF8639



Get ultra-fast data access by adding an NVMe U.2 SSD to your computer. This U.2 to PCIe adapter lets you add a high-speed, U.2 (4-lane PCIe) 2.5" NVMe SSD, such as the Intel 750 Series drive, to a PC with an available x4 PCI Express expansion slot.

You can mount the PCIe U.2 drive directly onto the adapter, giving you an easy and convenient way to improve your system performance and expand overall internal storage.

The expansion card lets you take full advantage of the fast performance and compact size of PCIe U.2 internal solid-state drives. The adapter connects directly to your computer motherboard to support an NVMe U.2 PCIe-based SSD through ultra-fast x4 PCIe. With the U.2 PCIe-based drive in place, the adapter gives your computer a significant speed boost.

The expansion card is equipped with a full-profile bracket and doesn't require an adapter cable for installation, this helps to reduce clutter and simplifies system builds. The drive connects directly to the SFF-8639 connector on the adapter, and the adapter connects directly to the computer motherboard.

The adapter is compatible with PCIe 3.0 motherboards and is also backward compatible with PCIe 2.0 and PCIe 1.0.

The PEX4SFF8639 is backed by a StarTech.com 2-year warranty and free lifetime technical support.

## Certifications, Reports and Compatibility

### Applications

- Upgrade your data-center or enterprise-level applications with U.2 NVMe SSD capability
- Utilize the advanced performance of a PCIe U.2 NVMe 2.5 in. SSD for intensive data workloads

- Work with large files more efficiently for audio/video production and editing
- Enhance productivity for data-heavy applications, ideal for developers and content creators

## Features

- Boost system speed and performance by adding a PCIe NVMe U.2 SSD to your PC
- Simplify system builds with a U.2 to PCIe adapter that mounts your SSD directly to the adapter, with no need for adapter cables
- PCI Express 3.0 x4 lane host adapter
- Compatible with x4 PCIe 3.0 motherboards, and backward compatible with PCIe 2.0 and PCIe 1.0
- OS independent with no drivers required, for a fast, hassle-free setup

---

### Hardware

Warranty	2 Years
Fan(s)	No
Interface	PCI Express
Bus Type	PCI Express
Number of Drives	1
Drive Size	2.5in
Compatible Drive Types	U.2 (PCIe, NVMe, SFF-8639)
Drive Installation	Fixed
Supported Drive Height(s)	15mm 12.5mm 9.5mm 7mm 5mm

---

### Performance

Hardware Raid Supported	No
Hot Swap Capability	No



---

**Connector(s)**

Drive Connectors	U.2 (PCIe, NVMe, SFF-8639)
Host Connectors	PCI Express x4

---

**Software**

OS Compatibility	OS independent; No software or drivers required
------------------	---

---

**Indicators**

LED Indicators	Activity Terminal/Header
----------------	--------------------------

---

**Environmental**

Operating Temperature	5C to 50C (41F to 122F)
Storage Temperature	-25C to 70C (-13F to 158F)
Humidity	15% ~ 90% RH

---

**Physical Characteristics**

Color	Red
Material	Steel
Product Length	6.5 in [16.5 cm]
Product Width	4.8 in [12.2 cm]
Product Height	0.9 in [22 mm]
Weight of Product	2.3 oz [65 g]

---

**Packaging Information**

Package Length	8.7 in [22 cm]
Package Width	6.3 in [16 cm]
Package Height	1.8 in [45 mm]
Shipping (Package) Weight	5.7 oz [161 g]

---

**What's in the Box**

Included in Package	drive adapter card
	drive-mounting screws



quick-start guide

---

***\*Product appearance and specifications are subject to change without notice.***

