

Portable

Canvio Advance

Secured in Style. Take Life Anywhere.



4 2 1
TB TB TB

Color    

EMEA Region, Toshiba Storage Solutions – The Canvio Advance is a solid storage solution for anyone who wants quality and style at great value. Up to 4 TB of high-performance storage is packed into a stylish casing. It comes in four different colors to match personal preferences. As a real value add, it includes a backup software package and easy-to-configure security software to keep your data safe.



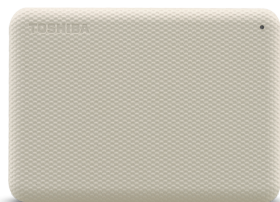
- ? 2.5" external hard drive
- ? Textured finish
- ? SuperSpeed USB 3.2 Gen 1
- ? USB-powered
- ? Auto-backup software
- ? Toshiba Storage Security Software

Manual

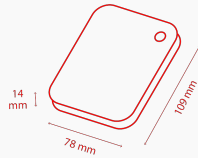
[Canvio-Advance_UM.pdf](#) ?

Tools

[ToshibaStorageDiagnosticTool_1.30.8920.zip](#) ?



Product Specifications



Basic Specifications

| | |
|----------------------------|---|
| Interface | USB 3.2 Gen 1 (USB 2.0 compatible) |
| Max. transfer rate | ~ 5.0 Gbit/s |
| File system | NTFS (for MS Windows) Requires reformatting for Mac OS |
| Power | USB bus power (max. 900mA) |
| System requirements | Formatted NTFS for Microsoft® Windows® 11, Windows® 10, Windows® 8.1, One free port of USB 3.2 Gen 1 or USB 2.0 Requires reformatting for macOS v12.0.1 / v11.5.2 / v11.5 / v11.2 / v10.15 / v10.14 / v10.13 / v10.12 |

Box Content

| | |
|--------------------|--|
| Box Content | Canvio Advance USB 3.2 Gen 1 Cable (Type A to Micro-B) User's manual (pre-installed on the hard drive) |
|--------------------|--|

Physical

| | |
|-------------------------|--|
| Weight (approx.) | 1 TB, 2 TB: 149 g 4 TB: 217,5 g |
| Dimensions | 1 TB, 2 TB: 78 x 109 x 14 mm 4 TB: 109 x 78 x 19 mm |
| Enclosure | Textured finish |

Features

| | |
|-------------------------------|--|
| Password lock software | Toshiba Storage Security Software (for download) |
| Backup Software | Toshiba Storage Backup Software (for download) |

Product Range

| Part number | Capacity | Color |
|--------------|----------|-------------|
| HDTCA40EK3CA | 4 TB | Black |
| HDTCA40EW3CA | 4 TB | Light beige |
| HDTCA40ER3CA | 4 TB | Red |
| HDTCA40EG3CA | 4 TB | Green |
| HDTCA20EK3AA | 2 TB | Black |
| HDTCA20EW3AA | 2 TB | Light beige |
| HDTCA20ER3AA | 2 TB | Red |
| HDTCA20EG3AA | 2 TB | Green |
| HDTCA10EK3AA | 1 TB | Black |
| HDTCA10EW3AA | 1 TB | Light beige |
| HDTCA10ER3AA | 1 TB | Red |
| HDTCA10EG3AA | 1 TB | Green |

Logistical Information:

| | |
|--------------------------|---------------------------------------|
| Box dimensions | 111 x 38 x 141 |
| Box weight (gross) | 227 g (1 TB / 2 TB); 300 g (4 TB) |
| Master carton dimensions | 123 x 205 x 165 mm |
| Box weight (gross) | 1,27 kg (1 TB / 2 TB); 1,63 kg (4 TB) |
| Boxes per master carton | 5 |
| Pallet dimensions | 1150 x 1150 x 130 mm |
| Pallet weight (net) | 22 kg |
| Units per pallet | 1350 |

Contact

Toshiba Electronics Europe GmbH

Hansaallee 181
40549 Düsseldorf
Germany