

Portable

# Canvio Basics

Storage Made Simple.



4 2 1  
TB TB TB

Color ●

- ? 2.5" external hard drive
- ? Matt finish
- ? SuperSpeed USB 3.2 Gen 1
- ? USB-powered

EMEA Region, Toshiba Storage Solutions – Quickly transfer files with SuperSpeed USB 3.2 Gen 1 and store up to 4 TB of data on Canvio Basics external hard drives. These devices are ready to use with Microsoft Windows and require no software installation, so it couldn't be easier to start storing all of your favourite files. Whether at your desk, or on the go, its timeless design with the matt finish means it'll always look good. What's more, the hard drive also allows you to connect to older hardware, with USB 2.0 compatibility.



## Manual

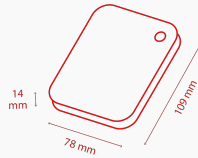
[Canvio-Basics\\_UM.pdf](#) ?

## Tools

[ToshibaStorageDiagnosticTool\\_1.30.8920.zip](#) ?



# Product Specifications



## Basic Specifications

|                            |  |
|----------------------------|--|
| <b>Interface</b>           | USB 3.2 Gen 1 (USB 2.0 compatible)   |
| <b>Max. transfer rate</b>  | ~ 5.0 Gbit/s   |
| <b>File system</b>         | NTFS (MS Windows)<br>Requires reformatting for Mac OS  |
| <b>Power</b>               | USB bus power (max. 900mA)   |
| <b>System requirements</b> | Formatted NTFS for Microsoft® Windows® 11, Windows® 10, Windows® 8.1<br>One free port of USB 3.2 Gen 1 or USB 2.0<br>Requires reformatting for macOS v12.0.1 / v11.5.2 / v10.15 / v10.14 / v10.13 / v10.12 |

## Box Content

|                    |   |
|--------------------|---|
| <b>Box Content</b> | Canvio Basics<br>USB 3.2 Gen 1 cable (Type A to Micro-B)<br>User's manual (pre-installed on the hard drive) |
|--------------------|---|

## Physical

|                         |  |
|-------------------------|--|
| <b>Weight (approx.)</b> | 500 GB: 140 g<br>1 TB, 2 TB: 149 g<br>4 TB: 217,5 g              |
| <b>Dimensions</b>       | 500 GB, 1 TB, 2 TB: 78 x 109 x 14 mm<br>4 TB: 78 x 109 x 19,5 mm |
| <b>Enclosure</b>        | Matt   |

# Product Range

| Part number  | Capacity | Color |
|--------------|----------|-------|
| HDTB440EK3CA | 4 TB     | Black |
| HDTB420EK3AA | 2 TB     | Black |
| HDTB410EK3AA | 1 TB     | Black |

# Logistical Information:

|                              |                                       |
|------------------------------|---------------------------------------|
| Box dimensions               | 111 x 38 x 141 mm                     |
| Box weight (gross)           | 500GB, 1TB, 2TB: 246g 4TB: 307g       |
| Master carton dimensions     | 123 x 205 x 165 mm                    |
| Master carton weight (gross) | 500GB, 1TB, 2TB: 1.36 kg 4TB: 1.67 kg |
| Boxes per master carton      | 5                                     |
| Pallet dimensions            | 1150 x 1150 x 130 mm                  |
| Pallet weight (net)          | 22 kg                                 |
| Units per pallet             | 1350                                  |

# Contact

**Toshiba Electronics Europe GmbH**

Hansaallee 181  
40549 Düsseldorf  
Germany