

ALUMINIUM TRUNKING SYSTEMS

Aluminium cable containment is an excellent choice of material for office areas that need a stylish but mechanically robust trunking and for industrial, workshop and laboratory installation, particularly where a high quality of screening performance is required.

ALUMINIUM TRUNKING SYSTEMS

The physical properties of aluminium offer the building industry a high quality material that is ideally suited for internal cable management distribution. Aluminium is light to handle with high mechanical strength and impact-resistance. Extruded sections provide attractive profiles and products are finished with a high quality, powder-coat that provides a blemish-resistant surface.

Aluminium perimeter trunking systems provide the specifier, contractor and end-user with elegant, stream-lined containment that offers the practical advantages of inherent LSOH (low smoke zero halogen) and screening properties. Aluminium is an excellent choice for office and educational areas requiring a stylish yet robust trunking system, particularly effective where a high quality of screening performance and security is required.

Marshall-Tufflex offer a wide range of multi-compartment aluminium trunking in different heights, designs, cable capacities and numbers of compartments so whatever the requirements, there will always be a perfect solution with Marshall-Tufflex.

Choose the UK's number one in cable management.

Standard colour

The standard colour for each Marshall-Tufflex range is shown within each relevant product information section, although silver grey 9006 is our most popular colour option in aluminium trunking.

The below table identifies the relevant RAL colour reference for all our standard colour options, dependent on product range. We would be happy to quote for any other colour requirements, please see the Special colours section below.

Standard Colours	
WH	SG
WH: White	SG: Silver Grey

Material	Standard colour	Colour code suffix	RAL
Aluminium	Silver Grey	SG	9006
	White	WH	9016

Please note: it is dependent on the product range as to which colour is available as standard.

Special colours

To help enhance the style of an installation, different variations of solid colour are sometimes required.

We can provide special colours in a painted solution dependent on your client's preference. All special colour requirements will need to be specified as a RAL colour.

These colours are made to order and therefore are subject to set up charges and a longer lead time. For more information and a quotation contact our Technical Team on +44 (0)1424 856688.



Please note: due to different processes and materials utilised, it may not always be possible to obtain an exact colour match between the extruded and moulded product.

Environmental & sustainability



- Aluminium is naturally found combined in over 270 different minerals, the chief source of which is bauxite ore.
- Its light weight means less strain on supporting structures, easier handling and reduced transport costs.
- 100% recyclable material and can be recycled many times without loss of quality.
- Recycling facilities are well established.

EMI protection



- First class EMI screening performance especially at higher frequencies.

Fire performance



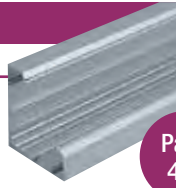
- Aluminium systems specified with polycarbonate fittings meet accepted requirements for LSOH.
- Withstands high temperatures with a melting point of 655°C (1211°F).
- Polycarbonate fittings are fire rated to UL94 V0.

Aluminium systems are available with standard powder coat finishes in white RAL 9016 or silver-grey RAL 9006*. For other finishes, please call our Technical Team on +44 (0)1424 856688.

Bench trunking

105 x 105mm

Desk and laboratory trunking.



Page 4

Sterling Curve Profile 1

167 x 50mm

A stylish curved three compartment dado trunking system designed to stop clutter, avoid dust traps and to make cleaning easy.



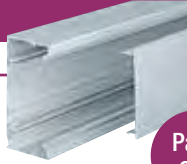
Page 12

*Only available in silver-grey RAL 9006 as standard.

Elegance 110

110 x 55mm

Dado and skirting trunking with a single cover.



Page 6

Sterling Curve Profile 2

167 x 50mm

A stylish curved three compartment skirting trunking system designed to stop clutter, avoid dust traps and to make cleaning easy.



Page 12

*Only available in silver-grey RAL 9006 as standard.

Sterling Profile 1

167 x 50mm

Dado trunking with three separate compartments and individual covers for each compartment.



Page 8

Elegance 170

170 x 55mm

A single cover "C" style trunking that can be sub-divided if required giving the installer versatility and added capacity. Can be used at dado and skirting level.



Page 17

*Only available in silver-grey RAL 9006 as standard.

Sterling Profile 2

167 x 50mm

Skirting trunking with three separate compartments and individual covers for each compartment.

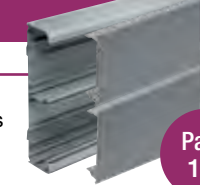


Page 8

Twin Plus

210 x 57mm

Large capacity dado and skirting trunking with two deep compartments with in-built segregation of power and data.



Page 19

*Only available in silver-grey RAL 9006 as standard.

Sterling Profile 3

167 x 50mm

Dado and skirting trunking with three separate compartments and individual covers for each compartment.

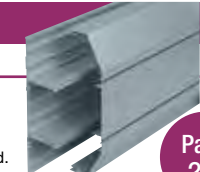


Page 8

XL301

220 x 65mm

Dado trunking with three deep compartments.



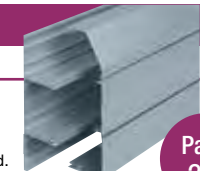
Page 22

*Only available in silver-grey RAL 9006 as standard.

XL302

220 x 65mm

Skirting trunking with three deep compartments.



Page 22

*Only available in silver-grey RAL 9006 as standard.

Note: you may use the rule on the left of this page to check profile sizes.

BENCH TRUNKING ALUMINIUM



Bench trunking aluminium is a robust angled trunking that can be mounted directly on to desks, work benches or fitted under shelving.

Product information

- 105 x 105mm
- Suitable for desk, bench or worktop applications
- Can be subdivided
- Fully compatible with Sterling flush power and data accessories
- Aluminium systems specified with polycarbonate fittings meet accepted requirements for LSOH

Data information

- Compliant up to Cat 7a
- Adjustable data box 32-40mm
- Screened divider and data boxes

Note: Allowance must be made for earthing the trunking system to comply with the current version of the BS 7671 Wiring Regulations.



Can be subdivided

Standard Colours	
WH	SG
WH: White	SG: Silver Grey

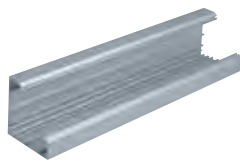
Colour code suffix: to indicate the finish you require, add the required colour code to the end of the product code.

#Data fittings

For made to order fittings to meet Cat 7a requirements please contact our Technical Team on +44 (0)1424 856688

ALUMINIUM TRUNKING SYSTEMS

Basic components



Base unit

code	size	pack
MBTAB105SG	105 x 105mm	1 x 3m



Cover

code	material	pack
MBTAL105SG	aluminium	1 x 3m
ETL1WH	PVC-U	8 x 3m

Aluminium base and PVC-U cover

Our PVC-U cover is compatible with our aluminium base. Order ETL1WH PVC-U cover

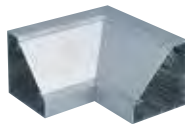
Fittings



End cap (steel)

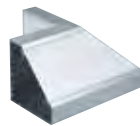
code	pack
BECA105SG	1

with fixing screws



Internal angle (aluminium)

code	pack
BIAA105SG	1



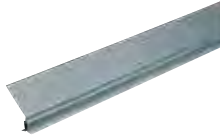
External angle (aluminium)

code	pack
BEAA105SG	1

p27

Technical Information

Components



Dividing fillet (PVC-U)		
code		pack
BDF105WH	4 x 3m	



Earth bonding kit		
code		pack
LBT3		1



Coupler pin		
code	description	pack
LDP1	ø2.0 x 20mm	10



Bonding strap		
code	description	pack
LBS1	base to base 32 amp	5

To aid alignment of base profiles



Bonding strap		
code	description	pack
LBS2	cover to base	5



Bonding strap		
code	description	pack
LBS3	end cap to base	1

Boxes and plates (polycarbonate)



RCD/MCB housing		
code	description	pack
EAHCA1MWH	polycarbonate	1

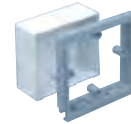
Not available in silver grey.
*Up to 4 modules can be accommodated.
Note: RCDs and MCBs are not supplied by Marshall-Tufflex



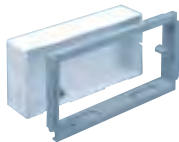
1 gang accessory box 30mm deep		
code		pack
ESSB1SG		1
ESSBA1WH		1



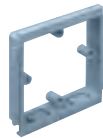
2 gang accessory box 30mm deep		
code		pack
ESSB2SG		1
ESSBA2WH		1



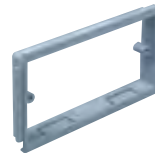
1 gang adjustable depth box		
code	depth	pack
EAB1SG	32-47mm	1



2 gang adjustable depth box		
code	depth	pack
EAB2SG	32 - 47mm	1



1 gang accessory plate		
code		pack
ESSP1SG		2



2 gang accessory plate		
code		pack
ESSP2SG		2

Screened boxes



1 gang screened accessory box (polycarbonate)		
code	depth	pack
ESSBA1SWH	30mm	20



2 gang screened accessory box (polycarbonate)		
code	depth	pack
ESSBA2SWH	30mm	10

Screening

Conductive spray (CS) is unique to Marshall-Tufflex and is applied in the factory to assist with screening from electromagnetic interference to data and communications cabling within trunking systems. The coating is applied to a range of data boxes, covers, clip-on components and fabricated fittings.

WARNING: A CS coating is not suitable for low voltage circuits. As per the current version of BS 7671 wiring regulations. For data/voice use only.

ELEGANCE 110 ALUMINIUM

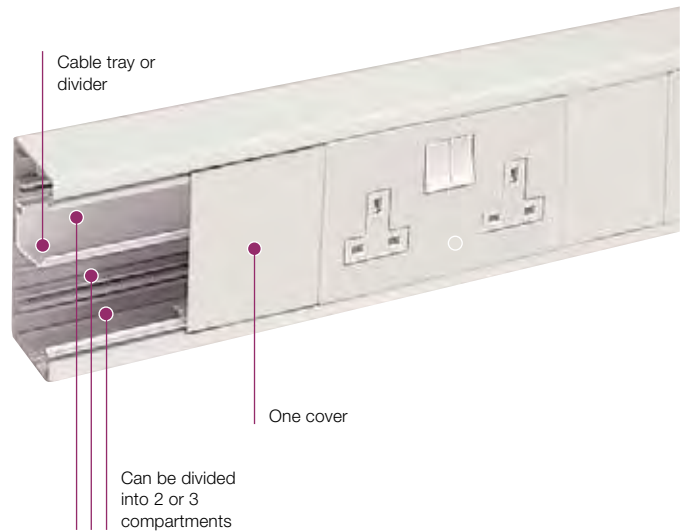
Elegance 110 aluminium is a small, rectangular, dado trunking system with a single cover. It is particularly useful for workshop or laboratory supply or in a commercial environment where extra mechanical strength is necessary.



Product information

- 110 x 55mm
- Compliant up to Cat 7a
- Can be subdivided into 2 or 3 compartments
- Suitable for dado and skirting applications
- Fully compatible with Marshall-Tufflex flush power and data accessories and standard UK wiring power and accessories
- Data compliant 25mm and 50mm bend radius
- Aluminium systems specified with polycarbonate fittings meet accepted requirements for LSOH

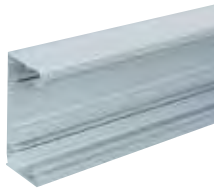
Note: Allowance must be made for earthing the trunking system to comply with the current version of the BS 7671 Wiring Regulations.



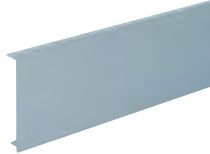
Standard Colours	
WH	SG
WH: White	SG: Silver Grey

Colour code suffix: to indicate the finish you require, add the required colour code to the end of the product code.

Basic components



Base unit	
code	pack
LTB2SG	1 x 3m



Main compartment cover	
code	pack
LTL1SG	1 x 3m

Fittings



End caps (screws included)	
code	pack
LECPSSG	1



Internal bend	
code	pack
LIBPSSG	1



External bend	
code	pack
LXPSSG	1



Flat angle	
code	pack
LFASSG	1

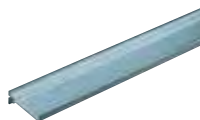


Flat tee	
code	pack
LFTSSG	1

p27

Technical
Information

Components



Dividing fillet (PVC-U)

code	description	pack
LDF1	unscreened	8 x 3m



Dividing tray (PVC-U)

code	description	pack
EDF2		8 x 3m



Earth bonding kit

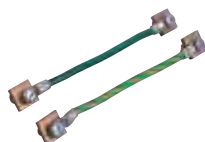
code	description	pack
LBT3		1



Coupler pin

code	description	pack
LDP1	ø2.0 x 20mm	10

To aid alignment of base profiles



Bonding strap

code	description	pack
LBS1	base to base 32Amp	5



Bonding strap

code	description	pack
LBS2	cover to base	5



Bonding strap

code	description	pack
LBS5	end cap to base	1

Boxes and plates (polycarbonate)



RCD/MCB housing

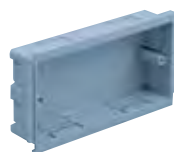
code	description	pack
EAHCA1MWH	polycarbonate	1

Not available in silver grey.
*Up to 4 modules can be accommodated.
Note: RCDs and MCBs are not supplied by Marshall-Tufflex



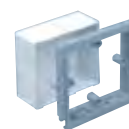
1 gang accessory box 30mm deep

code	description	pack
ESSB1SG		1
ESSBA1WH		1



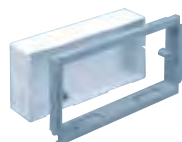
2 gang accessory box 30mm deep

code	description	pack
ESSB2SG		1
ESSBA2WH		1



1 gang adjustable depth box

code	depth	pack
EAB1SG	32-47mm	1



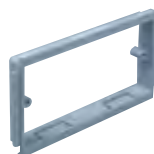
2 gang adjustable depth box

code	depth	pack
EAB2SG	32 - 47mm	1



1 gang accessory plate

code	description	pack
ESSP1SG		2



2 gang accessory plate

code	description	pack
ESSP2SG		2

Screened boxes



1 gang screened accessory box (polycarbonate)

code	depth	pack
ESSBA1SWH	30mm	20



2 gang screened accessory box (polycarbonate)

code	depth	pack
ESSBA2SWH	30mm	10

Screening

Conductive spray (CS) is unique to Marshall-Tufflex and is applied in the factory to assist with screening from electromagnetic interference to data and communications cabling within trunking systems. The coating is applied to a range of data boxes, covers, clip-on components and fabricated fittings.

WARNING: A CS coating is not suitable for low voltage circuits. As per the current version of BS 7671 wiring regulations. For data/voice use only.

STERLING ALUMINIUM PROFILE 1, 2 AND 3



Sterling Aluminium Profile is a popular and stylish looking trunking system that offers a variety of trunking profiles with separate compartment covers.

Product information

- 167 x 50mm
- 3 segregated compartments
- Can be subdivided
- Suitable for dado applications
- A range of polycarbonate clip-on fittings with built-in overlaps
- Fully compatible with Sterling flush power and data accessories
- Aluminium systems specified with polycarbonate fittings meet accepted requirements for LSOH

Data information

- Compliant up to Cat 7a
- Data compliant 25mm and 50mm bend radius
- Adjustable data box 32-40mm
- Screened divider and data boxes



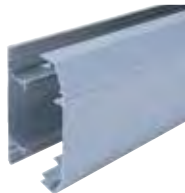
See page 11 for quick reference chart

Standard Colours	
WH	SG
WH: White	SG: Silver Grey

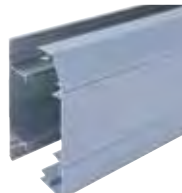
Colour code suffix: to indicate the finish you require, add the required colour code to the end of the product code.

ALUMINIUM TRUNKING SYSTEMS

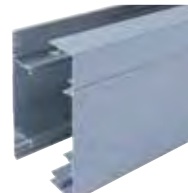
Trunking profiles



Sterling Aluminium Profile 1
size: 167 x 50mm



Sterling Aluminium Profile 2
size: 167 x 50mm

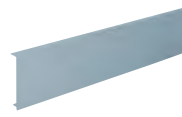


Sterling Aluminium Profile 3
size: 167 x 50mm

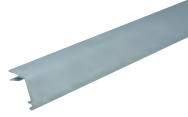
Basic components



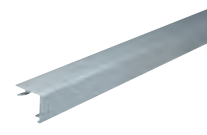
Base unit
code pack
ETB300MMF* 1 x 3m



Main compartment cover
code pack
LTL1SG 1 x 3m



Angled cover
code pack
ETAC300SG 1 x 3m



Square cover
code pack
ETSC300SG 1 x 3m

*MF=Mill finish



Profile 1 fittings



Profile 1 Aluminium Coupler

code	description	pack
ECP1MASG	polycarbonate	1



Profile 1 Aluminium End cap

code	description	pack
EECP1MASG	polycarbonate	1



Profile 1 Aluminium Internal bend

code	description	pack
EIBP1MASG	polycarbonate	1



Profile 1 Aluminium External bend

code	description	pack
EXBP1MASG	polycarbonate	1



Profile 1 Aluminium Flat angle - up/down

code	description	pack
EFA1ASG	aluminium	1



Profile 1 Aluminium Flat tee - up/down

code	description	pack
EFT1ASG	aluminium	1

Profile 2 fittings



Profile 2 Aluminium Coupler

code	description	pack
ECP2MASG	polycarbonate	1



Profile 2 Aluminium End cap

code	description	pack
EECP2MALHSG	polycarbonate	1
EECP2MARHSG	polycarbonate	1

LH = Left hand RH = Right hand



Profile 2 Aluminium Internal bend

code	description	pack
EIBP2MASG	polycarbonate	1



Profile 2 Aluminium External bend

code	description	pack
EXBP2MASG	polycarbonate	1



Profile 2 Aluminium Flat angle - up

code	description	pack
EFA2UASG	aluminium	1



Profile 2 Aluminium Flat angle - down

code	description	pack
EFA2DASG	aluminium	1

Sterling Profile 2 flat tees

Where profiles have one angled cover and one square cover, as with Sterling Profile 2, it is possible to create a tee by changing the top or bottom cover so that covers match the profile of the trunking. For example:

- Upward tee – select Profile 1 tee remove the angled bottom cover and replace with square cover.
- Downward tee – select Profile 3 tee remove the square top cover and replace with angled cover.

Profile 3 fittings



Profile 3 Aluminium Coupler 3 piece

code	description	pack
ECP3ASG	polycarbonate	1



Profile 3 Aluminium End cap 3 piece

code	description	pack
EECP3ASG	polycarbonate	1



Profile 3 Aluminium Internal bend 3 piece

code	description	pack
EIBP3ASG	polycarbonate	1



Profile 3 Aluminium External bend 3 piece

code	description	pack
EXBP3ASG	polycarbonate	1



Profile 3 Aluminium Flat angle

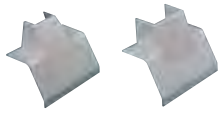
code	description	pack
EFA3ASG	aluminium	1



Profile 3 Aluminium Flat tee

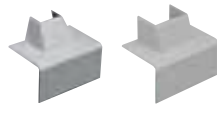
code	description	pack
EFT3ASG	aluminium	1

Fittings



Angled mini-trunking adaptor (polycarbonate)

code	Description	pack
EATA402SG	MMT2	5
EATA404SG	MMT4	1



Square mini-trunking adaptor (polycarbonate)

code	Description	pack
ESTA402SG	MMT2	5
ESTA404SG*	MMT4	1

*Not available in white

Components



Earth bonding kit

code	description	pack
LBT3		1



Coupler pin

code	description	pack
LDP1	ø2.0 x 20mm	10

To aid alignment of base profiles



Bonding strap

code	description	pack
LBS1	base to base 32Amp	5



Bonding strap

code	description	pack
LBS2	cover to base	5



Main crossover bridge (PVC-U)

code	pack
EMCB1	5



Angled cable retainer (PVC-U)

code	pack
EACR1	10

Boxes and plates (polycarbonate)



RCD/MCB housing

code	description	pack
EAHCA1MWH	polycarbonate	1

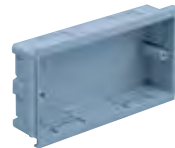
Not available in silver grey.
*Up to 4 modules can be accommodated.

Note: RCDs and MCBs are not supplied by Marshall-Tufflex



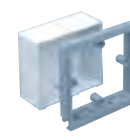
1 gang accessory box 30mm deep

code	pack
ESSB1SG	1
ESSBA1WH	1



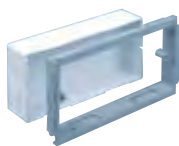
2 gang accessory box 30mm deep

code	pack
ESSB2SG	1
ESSBA2WH	1



1 gang adjustable depth box

code	depth	pack
EAB1SG	32-47mm	1



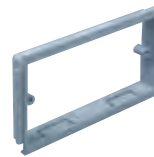
2 gang adjustable depth box

code	depth	pack
EAB2SG	32 - 47mm	1



1 gang accessory plate

code	pack
ESSP1SG	2



2 gang accessory plate

code	pack
ESSP2SG	2

Quick reference chart
Sterling Profile aluminium component chart

Base unit

Pack 1 x 3m
Milled aluminium



Main compartment cover

Pack 1 x 3m



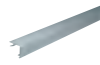
Angled cover

Pack 1 x 3m



Square cover

Pack 1 x 3m



Couplers

Pack 1



End caps

Pack 1
Left or right handed



Internal bends

Pack 1
Internal base corner needs to be mitred



External bends

Pack 1
External base corner needs to be mitred



Flat angles

Pack 1
Upward or downward



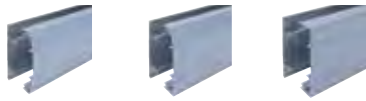
† Flat tees

Pack 1
† See Flat Tee information below



3 compartment

Profile 1 167 x 50mm	Profile 2 167 x 50mm	Profile 3 167 x 50mm
-------------------------	-------------------------	-------------------------



Profile 1 167 x 50mm	Profile 2 167 x 50mm	Profile 3 167 x 50mm
ETB300MMF	ETB300MMF	ETB300MMF
LTL1SG	LTL1SG	LTL1SG
2 x ETAC300SG	1 x ETAC300SG	-
-	1x ETSC300SG	2 x ETSC300SG
ECP1MASG	ECP2MASG	ECP3ASG
EECP1MASG	EECP2MALHSG EECP2MARHSG	EECP3ASG
EIBP1MASG	EIBP2MASG	EIBP3ASG
EXBP1MASG	EXBP2MASG	EXBP3ASG
EFA1ASG	EFA2UASG EFA2DASG	EFA3ASG
EFT1ASG	†	EFT3ASG

† Sterling Profile 2 flat tees

Where profiles have one angled cover and one square cover, as with Sterling Profile 2, it is possible to create a tee by changing the top or bottom cover so that covers match the profile of the trunking. For example:

- Upward tee – select Profile 1 tee remove the angled bottom cover and replace with square cover.
- Downward tee – select Profile 3 tee remove the square top cover and replace with angled cover.

Screened boxes



1 gang screened accessory box (polycarbonate)

code	depth	pack
ESSBA1SWH	30mm	20



2 gang screened accessory box (polycarbonate)

code	depth	pack
ESSBA2SWH	30mm	10

Screening

Conductive spray (CS) is unique to Marshall-Tufflex and is applied in the factory to assist with screening from electromagnetic interference to data and communications cabling within trunking systems. The coating is applied to a range of data boxes, covers, clip-on components and fabricated fittings.

WARNING: A CS coating is not suitable for low voltage circuits. As per the current version of BS 7671 wiring regulations. For data/voice use only.



STERLING CURVE ALUMINIUM PROFILE 1 AND 2

Sterling Curve Aluminium is a robust and stylish Cat 7a compliant perimeter dado or skirting system that is easy and cost effective to use. The adaptable system has 1 or 2 curved data compartments designed to stop clutter, avoid dust traps and to make cleaning easy.

Product information

- 167 x 50mm
- 3 segregated compartments
- Suitable for dado and skirting application
- Boxes available to comply with Part M (DDA)
- Comprehensive range of flush power and data accessories
- Single piece moulded polycarbonate couplers, end caps, internal and external bends
- Fabricated aluminium flat tees and flat angles
- Utilises ETB300MMF base and LTL1 cover so all centre compartment fittings from the Sterling Aluminium range are compatible

Data information

- Compliant up to Cat 7a
- Standard bend radius 25mm
- Data fittings available for bend radius up to 50mm
- Adjustable data box 32-40mm
- Screened data boxes



Individual covers for each compartment

See page 16 for quick reference chart

Standard Colour
SG
SG: Silver Grey

ALUMINIUM TRUNKING SYSTEMS

Trunking profiles



Curve Profile 1
size 167 x 50mm

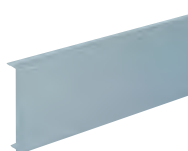


Curve Profile 2
size 167 x 50mm

Basic components



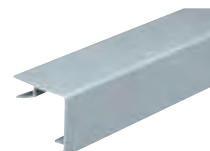
Base unit
code ETB300MMF pack 1 x 3m



Main compartment cover
code LTL1SG pack 1 x 3m



Curve cover
code CETC300SG pack 1 x 3m



Square cover
code ETSC300SG pack 1 x 3m

Curve Profile 1 fittings



NEW

**Curve Profile 1
Coupler**

code	description	pack
CECP1MASG	polycarbonate	1



NEW

**Curve Profile 1
End cap**

code	description	pack
CEEC1MASG	polycarbonate	1



NEW

**Curve Profile 1
Internal bend**

code	description	pack
CEIBP1MASG	polycarbonate	1



NEW

**Curve Profile 1
External bend**

code	description	pack
CEXBP1MASG	polycarbonate	1



NEW

**Curve Profile 1
Flat angle fabricated**

code	description	pack
CEFA1ASG		1



NEW

**Curve Profile 1
Flat tee fabricated**

code	description	pack
CEFT1ASG		1

Curve Profile 2 fittings



NEW

**Curve Profile 2
Coupler**

code	description	pack
CECP2MASG	polycarbonate	1



NEW

**Curve Profile 2
End cap**

code	description	pack
CEEC2MARHSG	(right) polycarbonate	1
CEEC2MALHSG	(left) polycarbonate	1



NEW

**Curve Profile 2
Internal bend**

code	description	pack
CEIBP2MASG	polycarbonate	1



NEW

**Curve Profile 2
External bend**

code	description	pack
CEXBP2MASG	polycarbonate	1



NEW

**Curve Profile 2
Flat angle up fabricated**

code	description	pack
CEFA2ASG		1



NEW

**Curve Profile 2
Flat tee fabricated**

code	description	pack
CEFT2ASG		1

Components



Earth bonding kit

code	pack
LBT3	1



Coupler pin

code	description	pack
LDP1	ø2.0 x 20mm	10

To aid alignment of base profiles



Bonding strap

code	description	pack
LBS2	base to base & cover to base	5



Main crossover bridge (PVC-U)

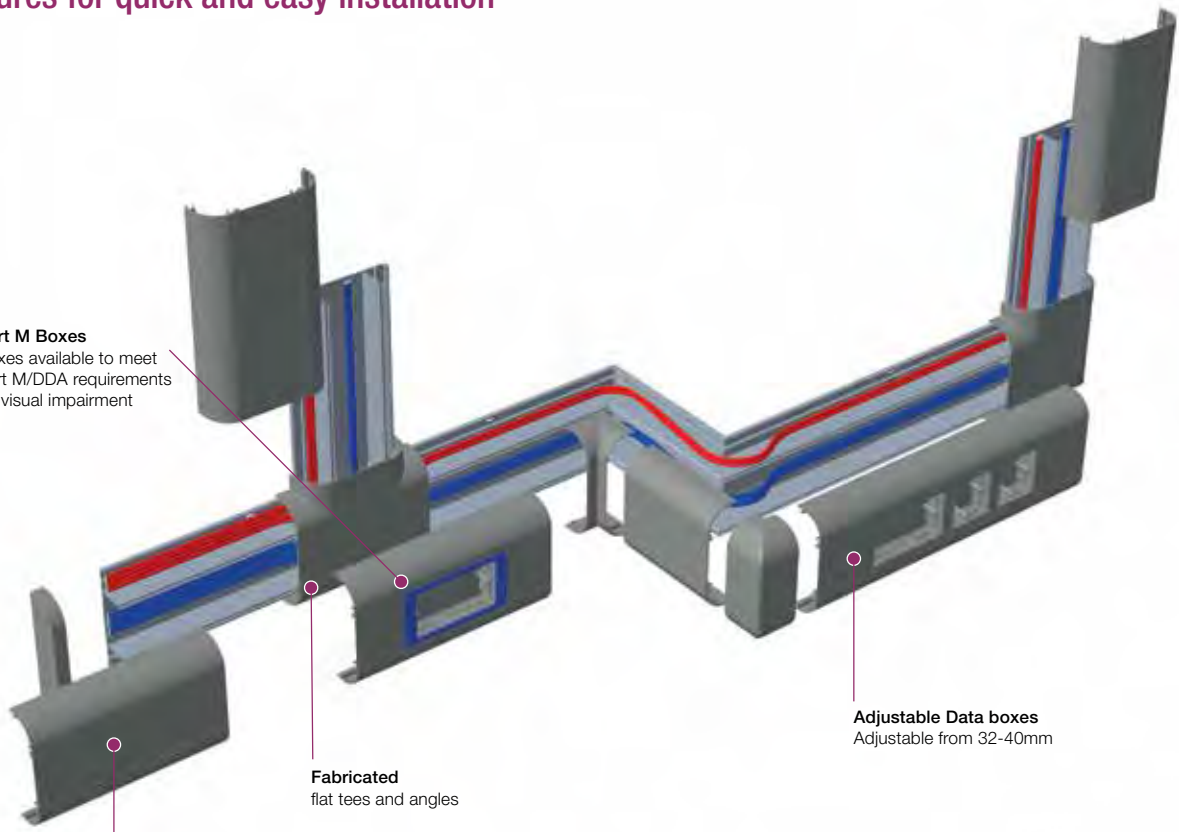
code	pack
EMCB1	5

Sterling Curve Aluminium Trunking

Sterling Curve Aluminium features a host of practical features for quick and easy installation

Part M Boxes

Boxes available to meet Part M/DDA requirements for visual impairment



Fabricated flat tees and angles

Adjustable Data boxes Adjustable from 32-40mm

Gently contoured profile

Easy to clean Impossible to clutter

Boxes and plates



RCD/MCB housing

code	description	pack
EAHCA1MWH	polycarbonate	1

*Up to 4 modules can be accommodated

Note: RCDs and MCBs are not supplied by Marshall-Tufflex



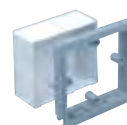
1 gang accessory box 30mm deep (polycarbonate)

code	description	pack
ESSB1SG		1



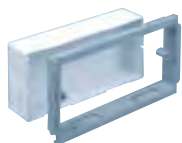
2 gang accessory box 30mm deep (polycarbonate)

code	description	pack
ESSB2SG		1



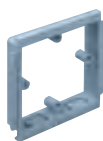
1 gang adjustable depth box (polycarbonate)

code	depth	pack
EAB1SG	32-47mm	1



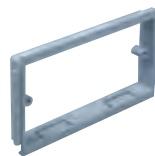
2 gang adjustable depth box (polycarbonate)

code	depth	pack
EAB2SG	32 - 47mm	1



1 gang accessory plate (polycarbonate)

code	description	pack
ESSP1SG		2



2 gang accessory plate (polycarbonate)

code	description	pack
ESSP2SG		2

Screened boxes



1 gang screened accessory box (polycarbonate)

code	depth	pack
ESSBA1SWH	30mm	20



2 gang screened accessory box (polycarbonate)

code	depth	pack
ESSBA2SWH	30mm	10

Screening

Conductive spray (CS) is unique to Marshall-Tufflex and is applied in the factory to assist with screening from electromagnetic interference to data and communications cabling within trunking systems. The coating is applied to a range of data boxes, covers, clip-on components and fabricated fittings.

WARNING: A CS coating is not suitable for low voltage circuits. As per the current version of BS 7671 wiring regulations. For data/voice use only.

Quick reference chart Sterling Curve Aluminium

3 compartment

Profile 1	Profile 2
167 x 50mm	167 x 50mm



Base unit

Pack 1 x 3m



ETB300MMF

ETB300MMF

Main compartment cover

Pack 1 x 3m



LTL1SG

LTL1SG

Curve cover

Pack 1 x 3m



2 x CETC300SG

CETC300SG

Square cover

Pack 1 x 3m



-

ETSC300SG

Couplers

Pack 1



CECP1MASG

CECP2MASG

End caps

Pack 1



CEECP1MASG

CEECP2MARHSG
CEECP2MALHSG

Internal bend

Pack 1



CEIBP1MASG

CEIBP2MASG

External bend

Pack 1



CEXBP1MASG

CEXBP2MASG

Flat angle fabricated

Pack 1



CEFA1ASG

-

Flat angle up fabricated

Pack 1



-

CEFA2ASG

Flat tee fabricated

Pack 1



CEFT1ASG

CEFT2ASG

ELEGANCE 170 ALUMINIUM

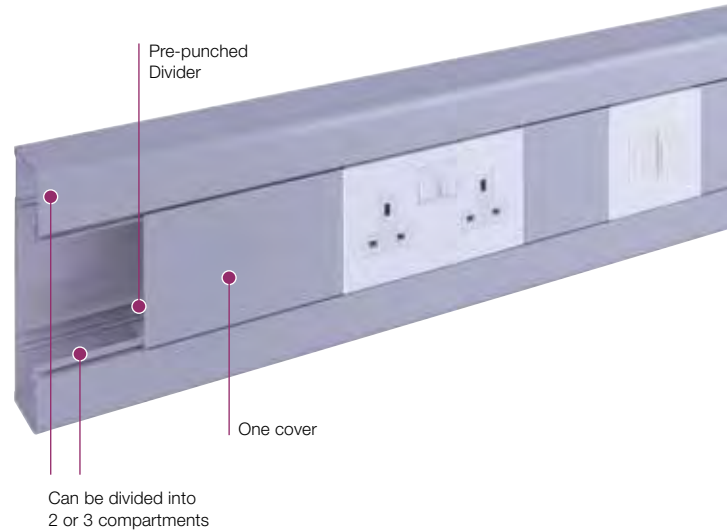
Elegance 170 aluminium is a sleek and rounded 170x55mm rectangular dado trunking system with a single cover, ideal for use in office or educational environments where extra mechanical strength and a higher cable capacity is required.



Product information

- 170 x 55mm
- Compliant up to Cat 7a
- "C" type section can be used as a single large compartment section or can be further subdivided into 2 or 3 compartments
- Suitable for dado and skirting applications
- Plain or pre-punched dividers for quick installation
- A range of fabricated fittings
- Part M compliant
- Data compliant 25mm and 50mm bend radius
- Compatible with Marshall-Tufflex flush power and data accessories and standard UK wiring power and accessories
- Standard silver-grey RAL 9006 powder coat finish
- Aluminium systems specified with polycarbonate fittings meet accepted requirements for LSOH

Note: Allowance must be made for earthing the trunking system to comply with the current version of the BS 7671 Wiring Regulations.



Standard Colours
SG
SG: Silver Grey

Basic components



Base unit and cover

code	pack
LP1050SG	1 x 2.9m

Note: In order to subdivide Elegance 170 dividing fillets should be used

Fittings



End cap (screws included)

code	pack
LP1030SG	1



Internal bend 90°

code	pack
LP1020SG	1



External bend 90° slow

code	pack
LP1026SG	1



Flat angle

code	pack
LP1040SG	1



Flat tee

code	pack
LP1045SG	1



Components



Galvanised steel dividing fillet (pre-punched)

code	length	pack
LP1005	1.45m	1



Plastic dividing fillet (un-punched)

code	length	pack
LP1006	1.45m	1



Earth bonding kit

code	pack
LBT3	1

Note: Fastons supplied suit 1.5mm to 2.5mm cable (blue) and 4.0mm to 6.0mm (yellow)



Coupler pin

code	description	pack
LDP1	ø2.0 x 20mm	10

To aid alignment of base profiles



Bonding strap

code	description	pack
ESBS1	base to base	5



Bonding strap

code	description	pack
LBS2	cover to base	5



Bonding strap

code	description	pack
LBS5	end cap to base	1

Boxes and plates (polycarbonate)



RCD/MCB housing

code	description	pack
EAHCA1MWH	polycarbonate	1

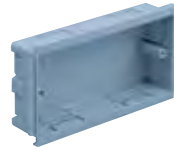
Not available in silver grey. *Up to 4 modules can be accommodated.

Note: RCDs and MCBs are not supplied by Marshall-Tufflex



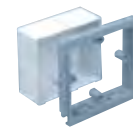
1 gang accessory box 30mm deep

code	pack
ESSB1SG	1



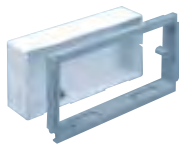
2 gang accessory box 30mm deep

code	pack
ESSB2SG	1



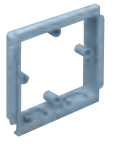
1 gang adjustable depth box

code	depth	pack
EAB1SG	32-47mm	1



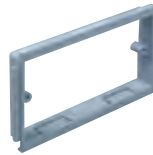
2 gang adjustable depth box

code	depth	pack
EAB2SG	32 - 47mm	1



1 gang accessory plate

code	pack
ESSP1SG	2



2 gang accessory plate

code	pack
ESSP2SG	2

Screened boxes



1 gang screened accessory box (polycarbonate)

code	depth	pack
ESSBA1SWH	30mm	20



2 gang screened accessory box (polycarbonate)

code	depth	pack
ESSBA2SWH	30mm	10

Screening

Conductive spray (CS) is unique to Marshall-Tufflex and is applied in the factory to assist with screening from electromagnetic interference to data and communications cabling within trunking systems. The coating is applied to a range of data boxes, covers, clip-on components and fabricated fittings.

WARNING: A CS coating is not suitable for low voltage circuits. As per the current version of BS 7671 wiring regulations. For data/voice use only.

TWIN PLUS ALUMINIUM

Twin Plus aluminium is an extra deep cable management solution incorporating two large segregated high capacity compartments. Twin Plus is specifically designed for carrying large quantities of Cat 7a data cabling.



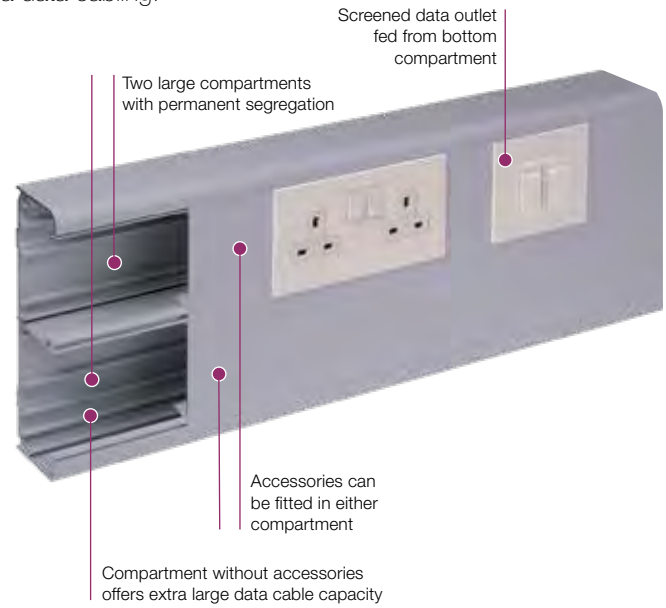
Product information

- 210 x 57mm
- 2 large permanent segregated compartments
- Each compartment can be subdivided
- Suitable for dado and skirting applications
- Bends angles and tees with a large bend radius
- Includes a range of clip-on fittings with built-in overlaps
- Fully compatible with Sterling flush power and data accessories
- All fittings are polycarbonate
- Available in silver grey as standard
- Aluminium systems specified with polycarbonate fittings meet accepted requirements for LSOH

Data information

- Compliant up to Cat 7a[#]
- 50mm bend radius fittings
- Adjustable data box 32-47mm
- Screened divider and data boxes

Note: Allowance must be made for earthing the trunking system to comply with the current version of the BS 7671 Wiring Regulations.



Standard Colours
SG
SG: Silver Grey

Colour code suffix: to indicate the finish you require, add the required colour code to the end of the product code.

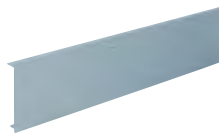
#Data fittings

For made to order fittings to meet Cat 7a requirements please contact our Technical Team on +44 (0)1424 856688

Basic components



Base unit	
code	pack
EMTA60SG	1 x 3m



Main compartment cover (aluminium)	
code	pack
LTL1SG	1 x 3m

Fittings (polycarbonate)



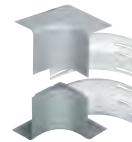
Coupler	
code	pack
EC60SG	1



End cap	
code	pack
EEC60SG	1



Internal bend cover	
code	pack
EIBC60SG	1



Internal bend assembly	
code	pack
EIB60SG	1



Standard external bend cover	
code	pack
ESXBC60SG	1

End cap retaining screws

When installing end caps, additional retention can be achieved by using end cap retaining screws G1310 (pack 40).



ALUMINIUM TRUNKING SYSTEMS

Fittings (polycarbonate)



External bend assembly - standard

code	pack
ESXB60SG	1

Capacity reduced by 50%



External bend assembly - large

code	pack
EXB60SG	1



Flat angle cover

code	pack
EFAC60SG	1



Flat angle assembly

code	pack
EFA60SG	1

Covers and cable inserts in Polycarbonate

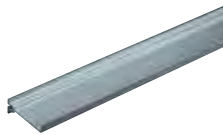


Flat tee assembly

code	pack
EFTA60SG	1

Flat tees include covers, cable inserts in Polycarbonate with base in aluminium

Components



Dividing fillet (PVC-U)

code	pack
LDF1	8 x 3m



Earth bonding kit

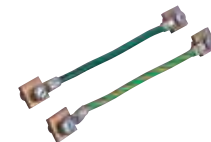
code	pack
LBT3	1



Coupler pin

code	description	pack
LDP1	ø2.0 x 20mm	10

To aid alignment of base profiles



Bonding strap

code	description	pack
LBS1	base to base 32 amp	5



Bonding strap

code	description	pack
LBS2	cover to base	5

Boxes and plates (polycarbonate)



RCD/MCB housing

code	description	pack
EAHCA1MWH	polycarbonate	1

*Up to 4 modules can be accommodated

Note: RCDs and MCBs are not supplied by Marshall-Tufflex



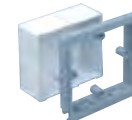
1 gang accessory box 30mm deep

code	pack
ESSB1SG	1



2 gang accessory box 30mm deep

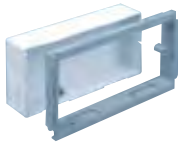
code	pack
ESSB2SG	1



1 gang adjustable depth box

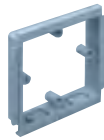
code	depth	pack
EAB1SG	32-47mm	1

Boxes and plates (polycarbonate)



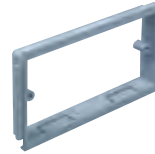
2 gang adjustable depth box

code	depth	pack
EAB2SG	32 – 47mm	1



1 gang accessory plate

code	pack
ESSP1SG	2



2 gang accessory plate

code	pack
ESSP2SG	2

Screened boxes



1 gang screened accessory box (polycarbonate)

code	depth	pack
ESSBA1SWH	30mm	20



2 gang screened accessory box (polycarbonate)

code	depth	pack
ESSBA2SWH	30mm	10

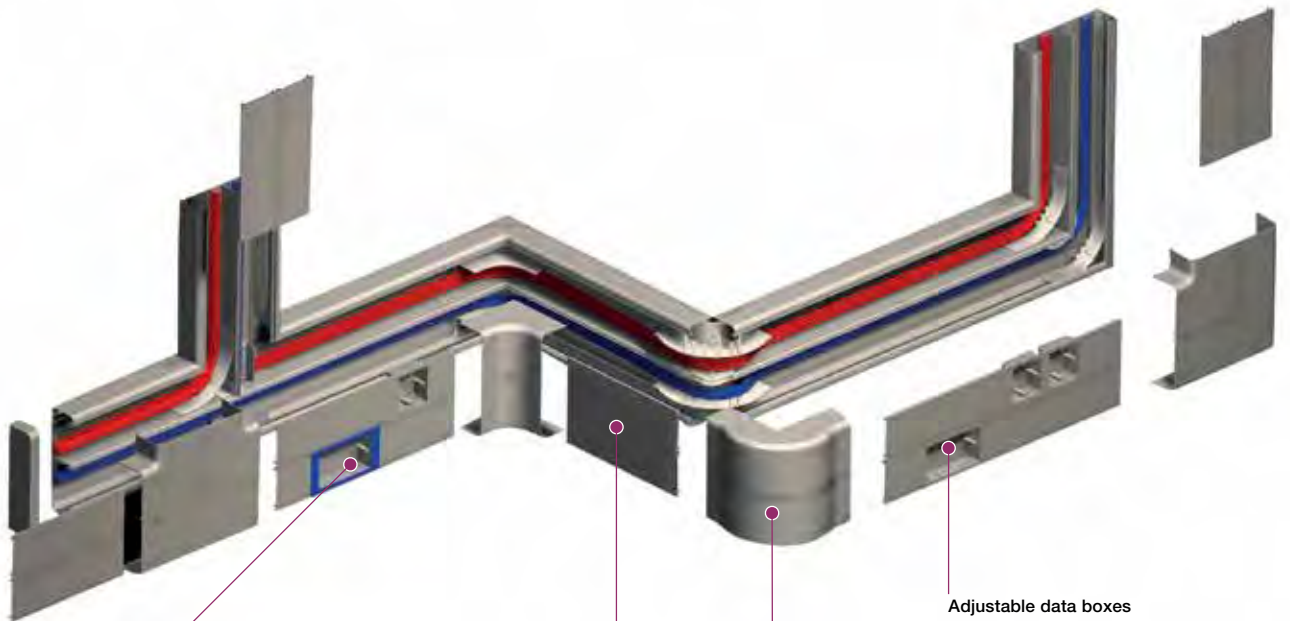
Screening

Conductive spray (CS) is unique to Marshall-Tufflex and is applied in the factory to assist with screening from electromagnetic interference to data and communications cabling within trunking systems. The coating is applied to a range of data boxes, covers, clip-on components and fabricated fittings.

WARNING: A CS coating is not suitable for low voltage circuits. As per the current version of BS 7671 wiring regulations. For data/voice use only.

Twin Plus aluminium

Twin Plus aluminium is a high cable capacity trunking system with a variety of practical features for power and data installations



Part M boxes
Boxes available to meet Part M/DDA requirements for visual impairment

Two separate compartments
Two large compartments that can be sub-divided, each with their own cover

Polycarbonate flat tees and angles
With integral 50mm bend radius control

Adjustable data boxes
Adjustable from 32-47mm
Can be screened against EMI

ALUMINIUM TRUNKING SYSTEMS

XL301 AND XL302 ALUMINIUM



XL aluminium trunking 301 and 302 are deep, 3-compartment systems that provide extra capacity and screening performance levels for data cabling.

Product information

- 220 x 65mm
- 3 deep segregated compartments
- Compartments can be subdivided
- Suitable for dado and skirting applications (XL301 is recommended for dado application only)
- Includes a range of polycarbonate clip-on fittings with built-in overlaps
- Fully compatible with Sterling flush power and data accessories
- Aluminium systems specified with polycarbonate fittings meet accepted requirements for LS0H

Data information

- Compliant up to Cat 7a*
- Data compliant 25mm and 50mm bend radius
- External bends feature internal segregators
- Adjustable data box 32mm - 47mm
- Screened divider and data boxes

Note: Allowance must be made for earthing the trunking system to comply with the current version of the BS 7671 Wiring Regulations.



Individual covers for each compartment

See page 25 for quick reference chart

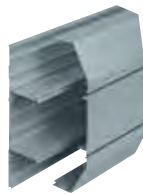
Standard Colour
SG
SG: Silver Grey

Colour code suffix: to indicate the finish you require, add the required colour code to the end of the product code.

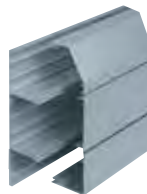
***Data fittings**
For made to order fittings to meet Cat 7a requirements please contact our Technical Team on +44 (0)1424 856688

ALUMINIUM TRUNKING SYSTEMS

Trunking profiles



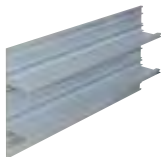
XL301
size 220 x 65mm



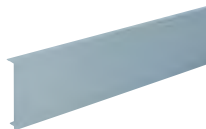
XL302
size 220 x 65mm

For dado installation only

Basic components



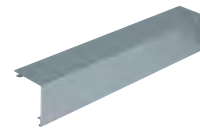
Base unit
code ELTB300 pack 2 x 3m



Main compartment cover
code LTL1SG pack 1 x 3m



Angled cover
code ELAC300SG pack 1 x 3m



Square cover
code ELSC300SG pack 1 x 3m

p27
Technical Information

XL301 fittings



**XL301
Coupler**

code	description	pack
EC301SG	polycarbonate	1



**XL301
End cap**

code	description	pack
EEC301SG	polycarbonate	1



**XL301
Internal bend**

code	description	pack
EIB301SG	polycarbonate	1



**XL301
External bend**

code	description	pack
EXB301SG	polycarbonate	1



**XL301
Flat angle – up/down**

code	description	pack
EFA301SG	aluminium	1



**XL301
Flat tee – up/down**

code	description	pack
EFT301SG	aluminium	1

XL302 fittings



**XL302
Coupler**

code	description	pack
EC302SG	polycarbonate	1



**XL302
End cap**

code	description	pack
EEC302LHSG	polycarbonate	1
EEC302RHSG	polycarbonate	1

LH = Left hand RH = Right hand



**XL302
Internal bend**

code	description	pack
EIB302SG	polycarbonate	1



**XL302
External bend**

code	description	pack
EXB302SG	polycarbonate	1



**XL302
Flat angle – upward**

code	description	pack
EFA302USG	aluminium	1



**XL302
Flat angle – downward**

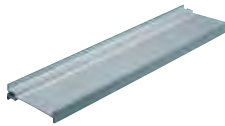
code	description	pack
EFA302DSG	aluminium	1

XL Trunking 302 flat tees

Where profiles have one angled cover and one square cover, as with XL302, it is possible to create a tee by changing the top or bottom cover so that covers match the profile of the trunking. For example:

- Upward tee – select XL301 tee remove the angled bottom cover and replace with square cover.

Components



Dividing fillet (PVC-U)

code	description	pack
ELDF200	8 x 3m	



Earth bonding kit

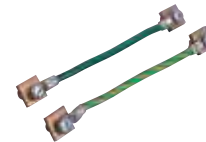
code	description	pack
LBT3		1



Coupler pin

code	description	pack
LDP1	ø2.0 x 20mm	10

To aid alignment of base profiles



Bonding strap

code	description	pack
LBS1	base to base 32Amp	5



Bonding strap

code	description	pack
LBS2	cover to base	5

Boxes and plates (polycarbonate)



RCD/MCB housing

code	description	pack
EAHCA1MWH	polycarbonate	1

Not available in silver grey.
*Up to 4 modules can be accommodated.
Note: RCDs and MCBs are not supplied by Marshall-Tufflex



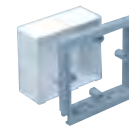
1 gang accessory box 30mm deep (polycarbonate)

code	description	pack
ESSB1SG		1



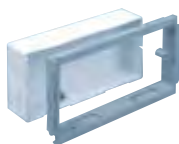
2 gang accessory box 30mm deep (polycarbonate)

code	description	pack
ESSB2SG		1



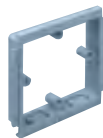
1 gang adjustable depth box

code	depth	pack
EAB1SG	32-47mm	1



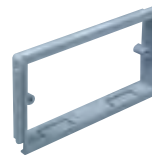
2 gang adjustable depth box

code	depth	pack
EAB2SG	32 - 47mm	1



1 gang accessory plate (polycarbonate)

code	description	pack
ESSP1SG		2



2 gang accessory plate

code	description	pack
ESSP2SG		2

Screened boxes



1 gang screened accessory box (polycarbonate)

code	depth	pack
ESSBA1SWH	30mm	20



2 gang screened accessory box (polycarbonate)

code	depth	pack
ESSBA2SWH	30mm	10

Screening

Conductive spray (CS) is unique to Marshall-Tufflex and is applied in the factory to assist with screening from electromagnetic interference to data and communications cabling within trunking systems. The coating is applied to a range of data boxes, covers, clip-on components and fabricated fittings.

WARNING: A CS coating is not suitable for low voltage circuits. As per the current version of BS 7671 wiring regulations. For data/voice use only.

Quick reference chart

XL301 and XL302

		3 Compartment	
		XL301	XL302
		220 x 65mm	220 x 65mm
			
Base unit		ELTB300	ELTB300
Pack	2 x 3m		
Features earth bonding rail and screw ports to aid the fastening of pipe clips and gas valves etc			
Main compartment cover		LTL1SG	LTL1SG
Pack	1 x 3m		
Angled cover		2 x ELAC300SG	1 x ELAC300SG
Pack	1 x 3m		
Square cover		-	1 x ELSC300SG
Pack	1 x 3m		
Couplers		EC301SG	EC302SG
Pack	1		
End caps		EEC301SG	EEC302LHSG EEC302RHSG
Pack	1		
left or right hand			
Internal bends		EIB301SG	EIB302SG
Pack	1		
External bends		EXB301SG	EXB302SG
Pack	1		
Flat angles		EFA301SG	EFA302USG EFA302DSG
Pack	1		
upward or downward			
† Flat tees		EFT301SG	†
Pack	1		
† See Flat Tee information below			

Base unit
Pack 2 x 3m
Features earth bonding rail and screw ports to aid the fastening of pipe clips and gas valves etc

Main compartment cover
Pack 1 x 3m

Angled cover
Pack 1 x 3m

Square cover
Pack 1 x 3m

Couplers
Pack 1

End caps
Pack 1
left or right hand

Internal bends
Pack 1

External bends
Pack 1

Flat angles
Pack 1
upward or downward

† Flat tees
Pack 1
† See Flat Tee information below

† XL Trunking 302 flat tees

Where profiles have one angled cover and one square cover, as with XL 302, it is possible to create a tee by changing the top or bottom cover so that covers match the profile of the trunking. For example:

- Upward tee – select XL 301 tee remove the angled bottom cover and replace with square cover.



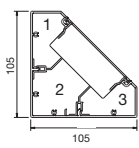
WE ARE PVC-U EXPERTS...

With over 75 years in the extrusion business.



Aluminium trunking capacity guide

Trunking height up to 150mm



Bench trunking – no box

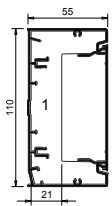
1 & 3 = 1842mm² total area
 1 & 3 = 829mm² 45% space factor
 2 = 3342mm² total area
 2 = 1504mm² 45% space factor

With box in comp 2

2 = 2188mm² total area
 2 = 984mm² 45% space factor

Internal dimensions

Compartment 1 = 101 x 101mm



Elegance 110 aluminium – no box

1 = 5254mm² total area
 1 = 2364mm² 45% space factor

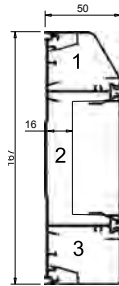
With box in comp 1

1 = 2987mm² total area
 1 = 1344mm² 45% space factor

Internal dimensions

Compartment 1 = 107 x 52mm

Trunking height from 150mm to 200mm



Sterling Profile 2 – no box

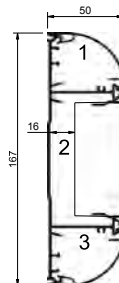
1 = 1060mm² total area
 1 = 477mm² 45% space factor
 2 = 3802mm² total area
 2 = 1711mm² 45% space factor
 3 = 1400mm² total area
 3 = 630mm² 45% space factor

With box in comp 2

2 = 1535mm² total area
 2 = 691mm² 45% space factor

Internal dimensions

Compartment 1 = 39 x 45mm
 Compartment 2 = 86 x 46mm
 Compartment 3 = 37 x 45mm



Sterling Curve Aluminium Profile 1 – no box

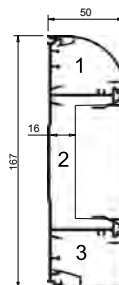
1 & 3 = 993mm² total area
 1 & 3 = 447mm² 45% space factor
 2 = 3275mm² total area
 2 = 1474mm² 45% space factor

With box in comp 2

2 = 959mm² total area
 2 = 432mm² 45% total area

Internal dimensions

Compartment 1 = 32 x 39mm
 Compartment 2 = 71 x 46mm
 Compartment 3 = 32 x 39mm



Sterling Curve Aluminium Profile 2 – no box

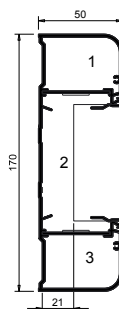
1 = 993mm² total area
 1 = 447mm² 45% space factor
 2 = 3275mm² total area
 2 = 1474mm² 45% space factor
 3 = 1035mm² total area
 3 = 466mm² 45% space factor

With box in comp 2

2 = 959mm² total area
 2 = 432mm² 45% total area

Internal dimensions

Compartment 1 = 32 x 39mm
 Compartment 2 = 71 x 46mm
 Compartment 3 = 29 x 39mm



Elegance 170 Aluminium – no box

1 = 1764mm² total area
 1 = 794mm² 45% space factor
 2 = 4508mm² Total Area
 2 = 2029mm² 45% space factor

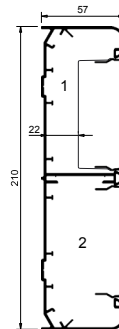
With box in comp 2

2 = 1748mm² total area
 2 = 787mm² 45% space factor

Internal dimensions

Compartment 1 = 36 x 49mm
 Compartment 2 = 91 x 52mm
 Compartment 3 = 36 x 49mm

Trunking height over 200mm



Twin Plus – no box

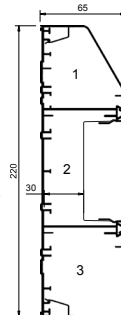
1 & 2 = 5000mm² total area
 1 & 2 = 2250mm² 45% space factor

With box in comps 1 or 2

1 & 2 = 2733mm² total area
 1 & 2 = 1230mm² 45% space factor

Internal dimensions

Compartment 1 = 95 x 52mm
 Compartment 2 = 95 x 52mm



XL302 – no box

1 = 2680mm² total area
 1 = 1206mm² 45% space factor
 2 = 4639mm² total area
 2 = 2088mm² 45% space factor
 3 = 3490mm² total area
 3 = 1570mm² 45% space factor

With box in comp 2

2 = 1123mm² total area
 2 = 505mm² 45% space factor

Internal dimensions

Compartment 1 = 64 x 62mm
 Compartment 2 = 84 x 62mm
 Compartment 3 = 64 x 61mm

To determine cable capacity, select the size of the cable required and its corresponding cable factor from the table. Divide the compartment area figure (with or without 45% space factor) with the cable factor figure to achieve cable capacity.

Conductor type	Size	Cable factor
Stranded PVC power	1.5mm ²	8.6
Stranded PVC power	2.5mm ²	12.6
Stranded PVC power	4.0mm ²	16.6
*Data cable	Ø5.5mm	23.8
*Data cable	Ø6.0mm	28.3
*Data cable	Ø6.5mm	33.2
*Data cable	Ø7.0mm	38.5
*Data cable	Ø8.4mm	55.4

Calculations

Please note that all the above calculations are based on a box depth of 30mm

Bench trunking aluminium

Material

Aluminium trunking is manufactured from high precision extruded aluminium with a powder coat finish.

White RAL 9016

Silver Grey RAL 9006

Accessory boxes are supplied in polycarbonate which is 100% recyclable.

Positioning

Bench and desk installations: a single run can be fitted to rear of furniture or, if run down centre line, two units can be joined back to back presenting accessories on both sides.

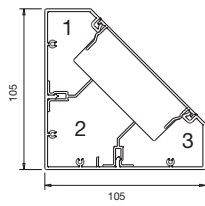
Bend radius control

Contact our Technical Team on +44 (0)1424 856688

Screening

Aluminium containment protects internal circuits from external electromagnetic interference. For internal segregation and screening, use a screened dividing fillet.

Dimensions



Bench trunking – with box

- 1 = 1345mm² total area
- 1 = 605mm² 45% space factor
- 2 = 2188mm² total area
- 2 = 984mm² 45% space factor
- 3 = 1345mm² total area
- 3 = 605mm² 45% space factor

Bench trunking – No box

- 1 = 1842mm² total area
- 1 = 828mm² 45% space factor
- 2 = 3342mm² total area
- 2 = 1504mm² 45% space factor
- 3 = 1842mm² total area
- 3 = 828mm² 45% space factor

Cable capacities

- All calculations allow for a 45% space factor.

As there can be differences between data cable sizes, Marshall-Tufflex recommend that cable dimensions are confirmed with the manufacturing company.

Cable capacity chart	Compartment 1		Compartment 2		Compartment 3	
	No box	With box	No box	With box	No box	With box
PVC power cable 1.5mm ² stranded copper	40	35	165	116	40	79
PVC power cable 2.5mm ² stranded copper	27	24	112	79	27	24
PVC power cable 4.0mm ² stranded copper	21	18	85	60	21	18
Data cable: Ø5.5mm	14	12	59	41	14	12
Data cable: Ø6.0mm	12	10	50	35	12	10
Data cable: Ø6.5mm	10	9	42	30	10	9
Data cable: Ø7.0mm	9	7	36	25	9	7
Data cable: Ø8.4mm	6	5	25	18	6	5

Only for straight runs. If bends are required please contact the Technical Team on +44 (0)1424 856688.

Elegance Aluminium

Material

Aluminium trunking is manufactured from high precision extruded aluminium with a powder coat finish.

White RAL 9016 (Elegance 110 only)

Silver Grey RAL 9006

Accessory boxes are supplied in polycarbonate which is 100% recyclable.

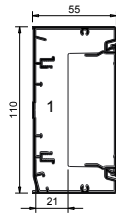
Positioning

Elegance can be installed at dado level or as a bench-mounted installation.

Screening

Aluminium containment will protect all internal circuits from external electromagnetic interference. For internal segregation metallic dividing fillets are available.

Dimensions

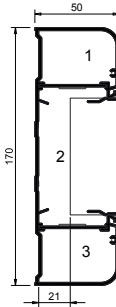


Elegance 110

1 = 5254mm² total area
1 = 2364mm² 45% space factor

With box in comp 1

1 = 2987mm² total area
1 = 1344mm² 45% space factor



Elegance 170

1 & 3 = 1764mm² total area
1 & 3 = 794mm² 45% space factor

Without Accessory

2 = 4508mm² total area
2 = 2029mm² 45% space factor

With Accessory

2 = 1748mm² total area
2 = 787mm² 45% space factor

Cable capacities

- All calculations allow for a 45% space factor.

As there can be differences between data cable sizes, Marshall-Tufflex recommend that cable dimensions are confirmed with the manufacturing company.

Cable capacity chart Total cables = Volume/cable factor	Elegance 110		Elegance 170			
	Compartment 1		Compartment 1	Compartment 2		Compartment 3
	No box	With box		No box	With box	
PVC power cable 1.5mm ² stranded copper	274	156	92	235	91	92
PVC power cable 2.5mm ² stranded copper	187	106	63	161	62	63
PVC power cable 4.0mm ² stranded copper	142	80	47	122	47	47
Data cable: Ø5.5mm	99	56	33	85	33	33
Data cable: Ø6.0mm	83	47	28	71	27	28
Data cable: Ø6.5mm	72	40	23	61	23	23
Data cable: Ø7.0mm	61	34	20	52	20	20
Data cable: Ø8.4mm	42	24	14	36	14	14

Sterling Profile aluminium

Material

Aluminium trunking is manufactured from high precision extruded aluminium with a powder coat finish.

White RAL 9016

Silver Grey RAL 9006

Sterling Curve is available in Silver Grey only.

Accessory boxes are supplied in polycarbonate which is 100% recyclable.

Positioning

Suitable for dado and skirting. If used for skirting applications, a clearance of 10mm is recommended above the floor covering to maintain IP4X rating.

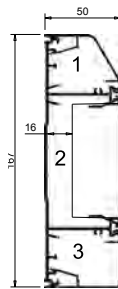
Bend radius control

Contact our Technical Team on +44 (0)1424 856688

Screening

Aluminium containment will protect all internal circuits from external electromagnetic interference. For internal segregation and screening, use a screened dividing fillet.

Dimensions



Sterling Profile 2 – no box

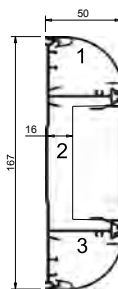
- 1 = 1060mm² total area
- 1 = 477mm² 45% space factor
- 2 = 3802mm² total area
- 2 = 1711mm² 45% space factor
- 3 = 1400mm² total area
- 3 = 630mm² 45% space factor

Note: The dimensions shown in this drawing can be used to work out dimensions for Sterling Profiles 1 & 3

Sterling Profile 3002 – with box

- 2 = 1535mm² total area
- 2 = 691mm² 45% space factor

Note: The dimensions shown in this drawing can be used to work out dimensions for Sterling Profile 3001

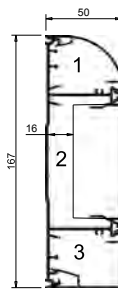


Sterling Curve Aluminium Profile 1 – no box

- 1 & 3 = 993mm² total area
- 1 & 3 = 447mm² 45% space factor
- 2 = 3275mm² total area
- 2 = 1474mm² 45% space factor

With box in comp 2

- 2 = 959mm² total area
- 2 = 432mm² 45% total area



Sterling Curve Aluminium Profile 2 – no box

- 1 = 993mm² total area
- 1 = 447mm² 45% space factor
- 2 = 3275mm² total area
- 2 = 1474mm² 45% space factor
- 3 = 1035mm² total area
- 3 = 466mm² 45% space factor

With box in comp 2

- 2 = 959mm² total area
- 2 = 432mm² 45% total area

Sterling Profile aluminium – continued

Cable capacities

- All calculations allow for a 45% space factor.

As there can be differences between data cable sizes, Marshall-Tufflex recommend that cable dimensions are confirmed with the manufacturing company.

Cable capacity chart	Compartment 1		Compartment 2		Compartment 3	
	No box	With box	No box	With box	No box	With box
PVC power cable 1.5mm² stranded copper						
Sterling Profile 1	52	–	171	50	52	–
Sterling Profile 2	52	–	171	50	54	–
Sterling Profile 3	54	–	171	50	54	–
Sterling Curve Profile 1	51	–	171	50	51	–
Sterling Curve Profile 2	51	–	171	50	54	–
PVC power cable 2.5mm² stranded copper						
Sterling Profile 1	35	–	116	34	35	–
Sterling Profile 2	35	–	116	34	36	–
Sterling Profile 3	36	–	116	34	36	–
Sterling Curve Profile 1	35	–	116	34	35	–
Sterling Curve Profile 2	35	–	116	34	36	–
PVC power cable 4.0mm² stranded copper						
Sterling Profile 1	27	–	88	26	27	–
Sterling Profile 2	27	–	88	26	28	–
Sterling Profile 3	28	–	88	26	28	–
Sterling Curve Profile 1	26	–	88	26	26	–
Sterling Curve Profile 2	26	–	88	26	28	–
Data cable: Ø5.5mm						
Sterling Profile 1	18	–	62	18	18	–
Sterling Profile 2	18	–	62	18	19	–
Sterling Profile 3	19	–	62	18	19	–
Sterling Curve Profile 1	18	–	62	18	18	–
Sterling Curve Profile 2	18	–	62	18	19	–
Data cable: Ø6.0mm						
Sterling Profile 1	15	–	52	15	15	–
Sterling Profile 2	15	–	52	15	16	–
Sterling Profile 3	16	–	52	15	16	–
Sterling Curve Profile 1	15	–	52	15	15	–
Sterling Curve Profile 2	15	–	52	15	16	–
Data cable: Ø6.5mm						
Sterling Profile 1	13	–	44	13	13	–
Sterling Profile 2	13	–	44	13	14	–
Sterling Profile 3	14	–	44	13	14	–
Sterling Curve Profile 1	13	–	44	13	13	–
Sterling Curve Profile 2	13	–	44	13	14	–
Data cable: Ø7.0mm						
Sterling Profile 1	11	–	38	11	11	–
Sterling Profile 2	11	–	38	11	12	–
Sterling Profile 3	12	–	38	11	12	–
Sterling Curve Profile 1	11	–	38	11	11	–
Sterling Curve Profile 2	11	–	38	11	12	–
Data cable: Ø8.4mm						
Sterling Profile 1	8	–	26	7	8	–
Sterling Profile 2	8	–	26	7	8	–
Sterling Profile 3	8	–	26	7	8	–
Sterling Curve Profile 1	8	–	26	7	8	–
Sterling Curve Profile 2	8	–	26	7	8	–

Twin Plus aluminium

Material

Aluminium trunking is manufactured from high precision extruded aluminium with a powder coat finish.

Silver Grey RAL 9006

Accessory boxes are supplied in polycarbonate which is 100% recyclable.

Positioning

Suitable for skirting and architrave. If used for skirting applications, a clearance of 10mm is recommended above the floor covering to maintain IP4X rating.

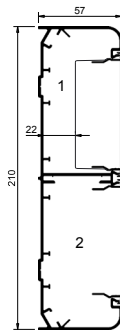
Bend radius control

The bend radius control fittings for Twin Plus provide a bend radius of 50mm.

Screening

Aluminium containment will protect all internal circuits from external electromagnetic interference. For internal segregation and screening, use a screened dividing fillet.

Dimensions



Twin Plus trunking – with accessory box

- 1 = 2733mm² total area
- 1 = 1230mm² 45% space factor
- 2 = 2833mm² total area
- 2 = 1275mm² 45% space factor

Twin Plus trunking – no box

- 1 = 5000mm² total area
- 1 = 2250mm² 45% space factor
- 2 = 5100mm² total area
- 2 = 2295mm² 45% space factor

Cable capacities

- All calculations allow for a 45% space factor.

As there can be differences between data cable sizes, Marshall-Tufflex recommend that cable dimensions are confirmed with the manufacturing company.

Cable capacity chart	Compartment 1		Compartment 2	
	No box	With box	No box	With box
PVC power cable 1.5mm ² stranded copper	261	143	261	143
PVC power cable 2.5mm ² stranded copper	178	97	178	97
PVC power cable 4.0mm ² stranded copper	135	74	135	74
Data cable: Ø5.5mm	94	51	94	51
Data cable: Ø6.0mm	79	43	79	43
Data cable: Ø6.5mm	67	37	67	37
Data cable: Ø7.0mm	58	31	58	31
Data cable: Ø8.4mm	40	22	40	22

XL trunking aluminium

Material

Aluminium trunking is manufactured from high precision extruded aluminium with a powder coat finish.

Accessory boxes are supplied in polycarbonate which is 100% recyclable.

Positioning

Suitable for skirting and architrave. If used for skirting applications, a clearance of 10mm is recommended above the floor covering to maintain IP4X rating.

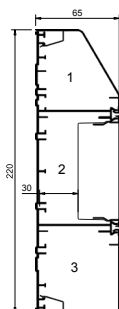
Bend radius control

For data bend radius control fittings for XL, please contact our Technical Team on +44 (0)1424 856688.

Screening

Aluminium containment will protect all internal circuits from external electromagnetic interference. For internal segregation and screening, use a screened dividing fillet.

Dimensions



XL302 – no box

- 1 = 2680mm² total area
- 1 = 1206mm² 45% space factor
- 2 = 4639mm² total area
- 2 = 2087mm² 45% space factor
- 3 = 3490mm² total area
- 3 = 1570mm² 45% space factor

XL302 – with box

- 2 = 1123mm² total area
- 2 = 505mm² 45% space factor

Note: The dimensions shown in this drawing can be used to work out dimensions for XL301

Cable capacities

- All calculations allow for a 45% space factor.

As there can be differences between data cable sizes, Marshall-Tufflex recommend that cable dimensions are confirmed with the manufacturing company.

Cable capacity chart	Compartment 1		Compartment 2		Compartment 3	
	No box	With box	No box	With box	No box	With box
PVC power cable 1.5mm² stranded copper						
XL301	140	–	242	58	140	–
XL302	140	–	242	58	182	–
PVC power cable 2.5mm² stranded copper						
XL301	95	–	165	40	95	–
XL302	95	–	165	40	124	–
PVC power cable 4.0mm² stranded copper						
XL301	72	–	125	30	72	–
XL302	72	–	125	30	94	–
Data cable: Ø5.5mm						
XL301	50	–	87	21	50	–
XL302	50	–	87	21	66	–
Data cable: Ø6.0mm						
XL301	42	–	73	17	42	–
XL302	42	–	73	17	55	–
Data cable: Ø6.5mm						
XL301	36	–	62	15	39	–
XL302	36	–	62	15	49	–
Data cable: Ø7.0mm						
XL301	31	–	54	13	31	–
XL302	31	–	54	13	40	–
Data cable: Ø8.4mm						
XL301	21	–	37	9	21	–
XL302	21	–	37	9	28	–