



**FREE
iPad**

When You Save Points Online

Summer 2010

Public Sector Customers & Schools Simply Fax or E-mail Your Order



**Data and Server
Cabinets**
Pages 22-37

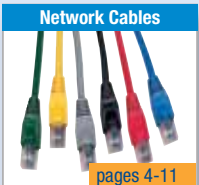
**The UK's Largest
Range Of Data &
Server Racks**



Wall Mounted Cabinets
Pages 22-23

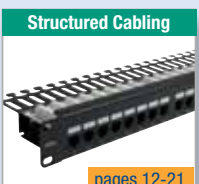


APC UPS
Page 48-50



Network Cables

pages 4-11



Structured Cabling

pages 12-21



Cabinets & Racks

pages 22-37



Network Accessories

pages 38-45

**Free Delivery For
Orders over £75**



**Next Day Delivery
on All Stock Items**



**Cisco
Switches**
Pages 67-67

**Fluke Tools
& Testers**
Pages 39-41



**FLUKE
networks**



Computer Cables

pages 46-47



Server Accessories

pages 48-57



**NETGEAR
ReadyNAS**
Pages 56-57

NETGEAR
ReadyNAS



Switches

pages 58-67

The Smart-UPS closet solution: managed, secured, cooled

Need to get out of the closet – but still keep an eye on your network? Bet you never thought you'd end up with so many closets to look after. And as they've grown in number, they've also grown in complexity, adding to the risk – and the high cost – of downtime.

The availability of those closets is critical, but whether your network is converged, in multiple locations, or housed out of sight and out of mind, you can't be in ten places at once, making sure they're all secure and running smoothly.

Fortunately, APC has engineered an integrated solution that starts with new Smart-UPS XL – the Smart-UPS you already know and trust, made even smarter with integrated management and security-enabled features. Your view into the network closet has never been clearer, with automatic alerts of power events, security threats, or thermal incidents that put your critical availability at risk.

If you're converging your network or just need an extra pair of eyes, start with APC Smart-UPS XL: the foundation for highly available, secure, cooled, managed networks.



APC's Smart-UPS and Symmetra lines are certified Cisco Compatible, integrate with Cisco CallManager version 4.x and Cisco Unity Express, and provide graceful unattended shutdown in the event of an extended power outage.

Compatibility certifications with the industry's top IP Telephony Vendors; Cisco, Avaya, and Nortel.

Smart-UPS XL
NEW! APC Smart-UPS XL Modular
3000VA 230V Rackmount/Tower

Network management-enabled UPS

Smart-UPS XL

Performance power protection with runtime for servers, and voice and data networks.

- included PowerChute management software
- intelligent battery management
- hot-swappable batteries, scalable runtime
- modular; tower or rack mount, hardware included



Management upgrades

PowerChute Business Edition

upgrades available

Reliable network-based shutdown of multiple servers.

Included with Smart-UPS.

- application shutdown support
- battery capacity indicator
- e-mail notification



InfraStruxure Central

Provides an efficient way for organisations to manage their company-wide physical infrastructure devices.

- real-time device monitoring
- custom reporting capabilities
- advanced security
- instant event notification



Security

NetBotz Security and Environmental

Protecting IT assets from physical and environmental threats.

- visual monitoring of all activities in the data centre or wiring closet
- third-party monitoring via dry-contacts, SNMP, IPMI, 0-5V, and 4-20mA
- user-configurable alarm and escalation policies
- temperature, humidity, and leak detection



Cooling

Wiring Closet Ventilation Unit

(Up to 3kW of heat removal) Rapidly deployable wall- or ceiling-mounted heat removal system for wiring closets.



InfraStruxure InRow SC

(Up to 7kW) Rapidly deployable, in-row air conditioning for server rooms and wiring closets.

- eliminates hot air mixing; maximises cooling efficiency
- network manageable
- real-time capacity monitoring
- modular, scalable





Providing a unique service to our Business Customers

We are not just another faceless company processing orders; we want to hear what our customers need, talk to them, help tailor a solution that fits their needs and provide them with the most cost effective solutions around. Our specialist Sales Advisers are here to help you make the right decisions concerning all of your networking requirements.

Only the products that matter!

We haven't filled our pages with masses of products and permutations, which we feel only serve to confuse our customers. For that reason, the Comms Express Product Guide does not contain our full range of products, but provides a comprehensive listing to suit most networking needs. If you are unable to find what you are looking for, our experienced Sales Team are on hand to help you.

Credit Facilities for Business Customers

Opening an account is simple – just call our Sales Team on **0845 2000 256** or download an Account Application Form at www.comms-express.com fill it in and fax it back to us on **0845 2000 257**. We are able to offer a 30-day net monthly credit account to most Business Customers.

Public Sector Customers

From Schools and Universities to Local Government bodies and NHS Trusts, we already service a wide range of organisations within the public sector. We are proud of the testimonials and referrals received from our clients, which are available for perusal on request. We're also happy to put you in touch with them personally to find out more about our great service.

Opening Times



Simply contact us by telephone, fax or E-mail with the product description, quantity required and delivery address - we do the rest.

**Monday - Friday,
8:30am - 5:30pm**

Delivery

At Comms Express we want to keep our delivery charges as simple as possible to help make your ordering process easier. Charges are as follows:

Normal Next Day

Orders Under £75 - £9.00
Orders Over £75 - £FOC

Pre Noon Next Day
All Orders - £19.50

All prices shown are EX VAT



NETGEAR
Connect with Innovation™
prism



FLUKE
networks

EXCEL D-Link
EXCELLENCE IN NETWORKING

BUFFALO
APC

by **Schneider Electric**

Network Cables

RJ45 Patch Leads	4-6
PatchSee Leads	6
Fibre Cable and Pre-Terms	7
Fibre Patch Panels	7
Multimode Fibre Patch Leads	8-9
Singlemode Fibre Patch Leads	10-11

Structured Cabling

Patch Panels	12
Modules	13
Cable	12-13
HellermannTyton Structured Products	14-15
ADC Krone Structured Products	16-17
10G Ethernet Products	18
Telephone Cable	19
Boxcons	20
Telephone Accessories	21

Cabinets & Racks

Wall Mounted Cabinets	22-23
Floor Standing Data Cabinets	24
Floor Standing Server Cabinets	25
Sound Proof & Office Style Cabinets	26-27
Colocation Cabinets	28
APC Cabinets	28
Cabinet Accessories	30-31
Power Distribution	32-33
Data Centre Accessories	34-35
Power/Environmental Monitoring	36-37

Network Accessories

Tools and Accessories	38
Fluke Network Tools	39-41
Trunking	42-43
Floor Boxes	43
Installation Essentials	44-45

Computer Leads

SVGA Leads and Splitters	46
USB Leads and Accessories	46
Power Leads	47

Server Accessories

APC UPS	48-50
KVM	51-53
Console Drawers	51, 53
Buffalo Network Attached Storage	54-55
ReadyNAS Network Attached Storage	56-57

Switches

Netgear Switches	58-61
HP Switches	62-63
Cisco Switches	64-66
Value Switches	67

Payment

CREDIT ACCOUNT

We are able to offer a credit account to most Business Customers. Simply download an Account Application Form from www.comms-express.com or contact the Sales Team on 0845 2000 256.

CHEQUE

Cheques should be made payable to Comms Express Ltd. Delivery charges and VAT should be included. Please contact the Sales Team on 0845 2000 256 regarding any pricing or carriage queries.

BACS TRANSFER

Please contact a member of our Sales Team for further information.

CREDIT & DEBIT CARD

We are able to accept most major credit and debit cards, including Visa, Mastercard, American Express, Delta, Switch/Maestro and Solo. No surcharge is applied to card sales.

Company details

Comms Express Limited
Unit 7, Grafton Place
Dukes Park Industrial Estate
Chelmsford, Essex, CM2 6TG
Telephone: 0845 2000 256
Fax: 0845 2000 257
E-mail: sales@comms-express.com
Company Reg No 04359914
VAT Reg No 787 391279



t: 0845 2000 256 monday - friday
8.30am - 5.30pm



e: sales@comms-express.com

Booted RJ45 Cat5e Patch Leads



All lengths available in Grey, Red, Green, Blue, Yellow, Pink, Orange, Purple, Black or White

DESCRIPTION	PRICE (£)
0.3m Booted Cat5e RJ45 Lead	0.28
0.5m Booted Cat5e RJ45 Lead	0.34
1.0m Booted Cat5e RJ45 Lead	0.47
1.5m Booted Cat5e RJ45 Lead	0.62
2.0m Booted Cat5e RJ45 Lead	0.72
3.0m Booted Cat5e RJ45 Lead	0.90
4.0m Booted Cat5e RJ45 Lead	1.19
5.0m Booted Cat5e RJ45 Lead	1.35
10.0m Booted Cat5e RJ45 Lead	2.28
15.0m Booted Cat5e RJ45 Lead	3.90
20.0m Booted Cat5e RJ45 Lead	4.95
30.0m Booted Cat5e RJ45 Lead	9.40

These booted patch leads are perfect in virtually every application. The boot provides strain relief between the cable and the plug, to prevent the cable being pulled from the plug when put under strain. The latch is also free to aid easy installation and removal, especially in high density installations. Available in a huge range of colours and lengths, these leads are sure to match your patching requirements.

FEATURES:

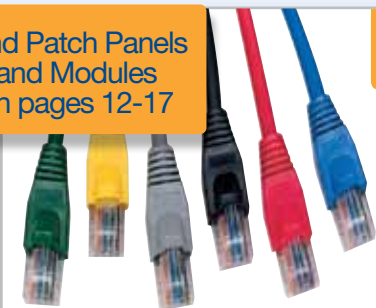
- 50 micron gold-plated connectors
- Cat5e certified
- Highly flexible cable
- Moulded boots which provide strain relief
- Available from 0.3m to 30m from stock
- Wired to 258A specification
- Quantity discounts available available on the website

All Leads Can Be Labelled on Request
50p Per Lead



Internet Express Link 1001

Find Patch Panels and Modules on pages 12-17



All lengths available in Grey, Red, Green, Blue, Yellow, Pink, Orange, Purple, Black or White

Fully Booted RJ45 Cat5e Patch Leads

DESCRIPTION	PRICE (£)
0.5m Fully Booted Cat5e RJ45 Lead	0.79
1.0m Fully Booted Cat5e RJ45 Lead	0.99
1.5m Fully Booted Cat5e RJ45 Lead	1.12
2.0m Fully Booted Cat5e RJ45 Lead	1.25
3.0m Fully Booted Cat5e RJ45 Lead	1.49
4.0m Fully Booted Cat5e RJ45 Lead	1.85
5.0m Fully Booted Cat5e RJ45 Lead	1.98
10.0m Fully Booted Cat5e RJ45 Lead	4.07
15.0m Fully Booted Cat5e RJ45 Lead	5.20
20.0m Fully Booted Cat5e RJ45 Lead	8.14

FEATURES:

- 50 micron gold-plated connectors
- Cat5e certified
- Highly flexible cable
- Full boots which provide strain relief and plug with latch protection
- Available from 0.5m to 20m from stock
- Longer lengths available on request
- Wired to 258A specification



Internet Express Link 1003

Longer Lengths Available Call or See Website for Details



All lengths available in Grey, Red, Green, Blue, Yellow, Pink, Orange, Purple, Black or White

UnBooted RJ45 Cat5e Patch Leads

DESCRIPTION	PRICE (£)
0.5m Unbooted Cat5e RJ45 Lead	0.66
1.0m Unbooted Cat5e RJ45 Lead	0.75
1.5m Unbooted Cat5e RJ45 Lead	0.91
2.0m Unbooted Cat5e RJ45 Lead	0.99
3.0m Unbooted Cat5e RJ45 Lead	1.22
4.0m Unbooted Cat5e RJ45 Lead	1.66
5.0m Unbooted Cat5e RJ45 Lead	1.86
10.0m Unbooted Cat5e RJ45 Lead	3.27
15.0m Unbooted Cat5e RJ45 Lead	5.15
20.0m Unbooted Cat5e RJ45 Lead	8.22

FEATURES:

- 50 micron gold-plated connectors
- Cat5e certified
- Highly flexible cable
- Available from 0.5m to 20m from stock
- Longer lengths available on request
- Wired to 258A specification



Internet Express Link 1002

Crossover RJ45 Cat5e Patch Leads



All lengths available in Red and Blue

DESCRIPTION	PRICE (£)
0.5m Cat5e RJ45 Lead	0.72
1.0m Cat5e RJ45 Lead	0.84
2.0m Cat5e RJ45 Lead	1.05
3.0m Cat5e RJ45 Lead	1.22
5.0m Cat5e RJ45 Lead	1.55
10.0m Cat5e RJ45 Lead	2.85

FEATURES:

- 50 micron gold-plated connectors
- Cat5e certified
- Highly flexible cable
- Available from 0.5m to 20m from stock
- Longer lengths available on request
- Wired to 258A specification



Internet Express Link 1004

Custom Made RJ45 Leads

We are able to manufacture virtually any type of RJ45 Patch Lead. Simply choose your specification, colours and options to obtain a price for your requirements.

All leads are made to order by our professional dedicated team of in house termination engineers and are tested to ensure full conformity with all the necessary specifications.

If you need to discuss your requirements further, please don't hesitate to contact our sales team on 0845 2000 256

Options Include:

- Cable - Cat5e UTP, Cat5e FTP and Cat6 UTP
- Sheath Type - PVC or LSOH
- Wiring Spec - Straight Through, Crossover, Rollover or Specify your own
- Labels - Have the leads labelled to your requirements
- Lengths - Up to 300mt available
- Cable and boots available in up to 10 colours.



FEATURES:

- All leads manufactured to order
- Individually tested and bagged
- Manufactured using only the highest quality components
- The widest choice of lengths and colours available
- Short lead times

Full Range of
Switches
on pages 58-67

 Internet Express Link **1051**

Cat6 RJ45 Patch Leads



DESCRIPTION	PRICE (£)
0.5m Cat6 RJ45 Lead	0.80
1.0m Cat6 RJ45 Lead	1.00
2.0m Cat6 RJ45 Lead	1.35
3.0m Cat6 RJ45 Lead	1.73
5.0m Cat6 RJ45 Lead	2.30
10.0m Cat6 RJ45 Lead	3.95
15.0m Cat6 RJ45 Lead	5.10
20.0m Cat6 RJ45 Lead	6.90

All lengths available in Grey, Red, Green, Blue, Yellow, Pink, Orange, Purple, Black or White

FEATURES:

- 50 micron gold-plated Cat6 connectors
- Cat6 certified
- Made from highly flexible patch cable
- Moulded boots providing strain relief
- Available from 0.5m to 20m from stock
- Wired to 258A specification

 Internet Express Link **1010**

Shielded RJ45 Cat5e Patch Leads



DESCRIPTION	PRICE (£)
0.5m Shielded Cat5e RJ45 Lead	1.04
1.0m Shielded Cat5e RJ45 Lead	1.22
2.0m Shielded Cat5e RJ45 Lead	1.44
3.0m Shielded Cat5e RJ45 Lead	1.88
5.0m Shielded Cat5e RJ45 Lead	2.58
10.0m Shielded Cat5e RJ45 Lead	4.68
20.0m Shielded Cat5e RJ45 Lead	7.72

All lengths available in Grey, Red, Green, Blue, Yellow

FEATURES:

- 50 micron gold-plated connectors
- Cat5e certified
- Made from highly flexible shielded patch cable
- Moulded boots providing strain relief
- Wired to 258A specification

 Internet Express Link **1005**

PatchSee Leads

**INNOVATING
AT LIGHT
SPEED**



PATENT PENDING

PATCHSEE BENEFITS

- Instant identification of network cable ends using an exclusive lighting system.
- Absolute security for your interventions: 100% reliable identification solution.
- > Clear confirmation before disconnecting servers and other links.
- > No more downtime or data loss due to handling mistakes.
- Connector designed for high density environments, switches, servers and patch panels.
- PatchClip: Removable colour-coding clips for:
 - > Managing multiple networks.
- > Visually differentiating racks, applications and servers according to their usage (e-commerce, web, data, etc.).
- > Protecting cable lock-tabs.
- Compatible with all computer cabling equipment, switches, etc.
- Many lengths available from 2 to 165 feet (0.6 to 50 meters), Cat. 6a / Cat. 6 / Cat. 5e UTP & FTP.
- PatchLight available in different colours for simultaneous identification.
- Hook & Loop cable ties for efficiently attaching and quickly detaching your cables.

TM PatchSee®
Optical Technology

www.comms-express.com/patchsee

Cat5e PatchSee RJ45 Patch Leads

DESCRIPTION	PRICE (£)
0.6m PatchSee RJ45 Cat5e Lead	2.23
1.2m PatchSee RJ45 Cat5e Lead	2.65
1.5m PatchSee RJ45 Cat5e Lead	2.79
2.1m PatchSee RJ45 Cat5e Lead	3.06
3.1m PatchSee RJ45 Cat5e Lead	3.53
4.9m PatchSee RJ45 Cat5e Lead	4.36

Cat6 PatchSee RJ45 Patch Leads

DESCRIPTION	PRICE (£)
0.6m PatchSee RJ45 Cat6 Lead	3.71
1.2m PatchSee RJ45 Cat6 Lead	4.09
1.5m PatchSee RJ45 Cat6 Lead	4.36
2.1m PatchSee RJ45 Cat6 Lead	4.83
3.1m PatchSee RJ45 Cat6 Lead	5.48
4.9m PatchSee RJ45 Cat6 Lead	6.78

Cat6a PatchSee RJ45 Patch Leads

DESCRIPTION	PRICE (£)
0.6m PatchSee RJ45 Cat6a Lead	4.18
1.2m PatchSee RJ45 Cat6a Lead	4.46
1.5m PatchSee RJ45 Cat6a Lead	4.92
2.1m PatchSee RJ45 Cat6a Lead	5.39
3.1m PatchSee RJ45 Cat6a Lead	6.13
4.9m PatchSee RJ45 Cat6a Lead	7.61

PatchSee Accessories

DESCRIPTION	PRICE (£)
PatchSee Pro Injection Lamp - Red Light	43.70
PatchSee Pro Injection Lamp - White Light	43.70
PatchClip - Pack of 50 (Available in 16 Colours)	12.70



[Internet Express Link](#) **1052**

Apply for a Free
PatchSee Demo
Kit Online



Pre Terminated Fibre

We can now offer you a complete Fibre Optic Pre-Term manufacturing service.

All leads are manufactured by our team of fully trained fibre termination engineers. Stringent testing procedures are in place to ensure all leads are fully compliant with all the necessary industry standards.

Using our online configurator, you can ensure you get the exact Fibre Pre-Term you require. Options available include:

- Connector Types - ST, SC & LC
- Fibre Size - 62.5/125 (OM1), 50/125 (OM2), 50/125 (OM3)
- Number of Cores - from 4 - 24
- Lengths - Up to 1000mt available

Sample Prices

DESCRIPTION	PRICE (£)
4 Core ST-ST - 10mt 50/125/OM2	76.26
4 Core SC-SC - 10mt 50/125/OM2	75.30
4 Core LC-LC - 10mt 50/125/OM2	82.10
4 Core Extra Per Metre Price	0.85
24 Core ST-ST - 10mt 50/125/OM2	213.36
24 Core SC-SC - 10mt 50/125/OM2	219.12
24 Core LC-LC - 10mt 50/125/OM2	259.44
24 Core Extra Per Metre Price	3.00

Logon to
www.comms-express.com/pre-term
for a bespoke price



FEATURES:

- All leads manufactured to order
- Individually tested
- Supplied on a drum, complete with pulling eye
- Manufactured using only the highest quality components
- Short lead times

Use Our Online
Configurator to
Select Your Pre-Term

Internet Express Link **2209**

Multicore Fibre Cable

DESCRIPTION	PRICE (£)
4 Core Multimode Tight Buffered Fibre Cable (62.5 & 50/125)	0.43
8 Core Multimode Tight Buffered Fibre Cable (62.5 & 50/125)	0.77
12 Core Multimode Tight Buffered Fibre Cable (62.5 & 50/125)	1.15
16 Core Multimode Tight Buffered Fibre Cable (62.5 & 50/125)	1.63
24 Core Multimode Tight Buffered Fibre Cable (62.5 & 50/125)	1.89

FEATURES:

- Tight Buffered Fibre cable available in 62.5/125 (OM1) and 50/125 (OM2)
- Available from 4 core to 24 core
- Cut to order in exact lengths as required

Internet Express Link **2203**

Fibre Patch Panels

DESCRIPTION	PRICE (£)
8 Port SC Loaded Fibre Patch Panels	25.03
16 Port SC Loaded Fibre Patch Panels	29.86
24 Port SC Loaded Fibre Patch Panels	34.70
8 Port ST Loaded Fibre Patch Panels	25.36
16 Port ST Loaded Fibre Patch Panels	30.35
24 Port ST Loaded Fibre Patch Panels	35.98

FEATURES:

- Pre-loaded with either ST or SC Multimode fibre connections
- Supplied complete with a cable management kit and cage nuts and bolts

Internet Express Link **2205**

Fibre Accessories

DESCRIPTION	PRICE (£)
ST Simplex Fibre Coupler	0.70
SC Duplex Fibre Coupler	3.20
ST - SC Duplex Fibre Adaptor	3.50

FEATURES:

- Range of fibre couplers and adapters

Internet Express Link **2207**

ST - ST Multimode Fibre Leads



DESCRIPTION	OM3	OM1/OM2
0.5m ST - ST Multimode Duplex Lead	-	3.40
1.0m ST - ST Multimode Duplex Lead	7.00	3.40
2.0m ST - ST Multimode Duplex Lead	8.00	3.50
3.0m ST - ST Multimode Duplex Lead	9.00	3.75
5.0m ST - ST Multimode Duplex Lead	11.00	4.55
10.0m ST - ST Multimode Duplex Lead	16.00	5.85
15.0m ST - ST Multimode Duplex Lead	21.00	7.20
20.0m ST - ST Multimode Duplex Lead	26.00	8.55
30.0m ST - ST Multimode Duplex Lead	-	14.10

FEATURES:

- Available in 62.5/125 (OM1), 50/125 (OM2) and enhanced 50/125 (OM3)
- Made with high quality Ceramic ST connectors
- LSOH Sheath Cable
- Individually Bagged, Labelled and Supplied with a Test Report

[Internet Express Link](#) **2101**

SC - SC Multimode Fibre Leads



DESCRIPTION	OM3	OM1/OM2
0.5m SC - SC Multimode Duplex Lead	-	3.00
1.0m SC - SC Multimode Duplex Lead	7.00	3.60
2.0m SC - SC Multimode Duplex Lead	8.00	3.85
3.0m SC - SC Multimode Duplex Lead	9.00	4.10
5.0m SC - SC Multimode Duplex Lead	11.00	4.90
10.0m SC - SC Multimode Duplex Lead	16.00	6.20
15.0m SC - SC Multimode Duplex Lead	21.00	8.60
20.0m SC - SC Multimode Duplex Lead	24.00	9.95
30.0m SC - SC Multimode Duplex Lead	-	12.50

FEATURES:

- Available in 62.5/125 (OM1), 50/125 (OM2) and enhanced 50/125 (OM3)
- Made with high quality SC connectors
- LSOH Sheath Cable
- Individually Bagged, Labelled and Supplied with a Test Report

[Internet Express Link](#) **2103**

SC - ST Multimode Fibre Leads



DESCRIPTION	OM3	OM1/OM2
0.5m SC - ST Multimode Duplex Lead	-	3.60
1.0m SC - ST Multimode Duplex Lead	7.00	3.70
2.0m SC - ST Multimode Duplex Lead	8.00	3.80
3.0m SC - ST Multimode Duplex Lead	9.00	3.90
5.0m SC - ST Multimode Duplex Lead	9.00	4.40
10.0m SC - ST Multimode Duplex Lead	16.00	5.70
15.0m SC - ST Multimode Duplex Lead	21.00	8.65
20.0m SC - ST Multimode Duplex Lead	26.00	10.25
30.0m SC - ST Multimode Duplex Lead	-	13.00

FEATURES:

- Available in 62.5/125 (OM1), 50/125 (OM2) and enhanced 50/125 (OM3)
- Made with high quality SC and Ceramic ST connectors
- LSOH Sheath Cable
- Individually Bagged, Labelled and Supplied with a Test Report

[Internet Express Link](#) **2102**

MTRJ - SC Multimode Fibre Leads



DESCRIPTION	OM3	OM1/OM2
0.5m MTRJ - SC Multimode Duplex Lead	-	6.75
1.0m MTRJ - SC Multimode Duplex Lead	10.00	7.00
2.0m MTRJ - SC Multimode Duplex Lead	11.00	7.50
3.0m MTRJ - SC Multimode Duplex Lead	12.00	8.00
5.0m MTRJ - SC Multimode Duplex Lead	14.00	9.00
10.0m MTRJ - SC Multimode Duplex Lead	19.00	14.00
15.0m MTRJ - SC Multimode Duplex Lead	24.00	16.50
20.0m MTRJ - SC Multimode Duplex Lead	29.00	19.00
30.0m MTRJ - SC Multimode Duplex Lead	-	24.50

FEATURES:

- Available in 62.5/125 (OM1), 50/125 (OM2) and enhanced 50/125 (OM3)
- Made with high quality SC & MTRJ connectors
- LSOH Sheath Cable
- Individually Bagged, Labelled and Supplied with a Test Report

[Internet Express Link](#) **2105**

MTRJ - ST Multimode Fibre Leads



DESCRIPTION	OM3	OM1/OM2
0.5m MTRJ - ST Multimode Duplex Lead	-	6.75
1.0m MTRJ - ST Multimode Duplex Lead	10.00	7.00
2.0m MTRJ - ST Multimode Duplex Lead	11.00	7.50
3.0m MTRJ - ST Multimode Duplex Lead	12.00	8.00
5.0m MTRJ - ST Multimode Duplex Lead	14.00	9.00
10.0m MTRJ - ST Multimode Duplex Lead	19.00	14.00
15.0m MTRJ - ST Multimode Duplex Lead	24.00	16.50
20.0m MTRJ - ST Multimode Duplex Lead	29.00	19.00
30.0m MTRJ - ST Multimode Duplex Lead	-	24.00

FEATURES:

- Available in 62.5/125 (OM1), 50/125 (OM2) and enhanced 50/125 (OM3)
- Made with high quality ST & MTRJ connectors
- LSOH Sheath Cable
- Individually Bagged, Labelled and Supplied with a Test Report

[Internet Express Link](#) **2104**

LC - LC Multimode Fibre Leads



LC Connectors
Compatible with SFP
Mini GBIC Modules

DESCRIPTION	OM3	OM1/OM2
0.5m LC - LC Multimode Duplex Lead	-	6.55
1.0m LC - LC Multimode Duplex Lead	13.00	6.80
2.0m LC - LC Multimode Duplex Lead	14.00	7.10
3.0m LC - LC Multimode Duplex Lead	15.00	7.40
5.0m LC - LC Multimode Duplex Lead	17.00	7.95
10.0m LC - LC Multimode Duplex Lead	20.00	8.50
15.0m LC - LC Multimode Duplex Lead	24.00	10.20
20.0m LC - LC Multimode Duplex Lead	-	13.10
30.0m LC - LC Multimode Duplex Lead	-	15.60

FEATURES:

- Available in 62.5/125 (OM1), 50/125 (OM2) and enhanced 50/125 (OM3)
- Made with high quality LC connectors
- LSOH Sheath Cable
- Individually Bagged, Labelled and Supplied with a Test Report

[Internet Express Link](#) **2109**

LC - SC Multimode Fibre Leads



DESCRIPTION	OM3	OM1/OM2
0.5m LC - SC Multimode Duplex Lead	-	5.35
1.0m LC - SC Multimode Duplex Lead	10.00	5.95
2.0m LC - SC Multimode Duplex Lead	11.00	6.20
3.0m LC - SC Multimode Duplex Lead	12.00	6.35
5.0m LC - SC Multimode Duplex Lead	14.00	6.95
10.0m LC - SC Multimode Duplex Lead	19.00	8.80
15.0m LC - SC Multimode Duplex Lead	24.00	10.60
20.0m LC - SC Multimode Duplex Lead	28.00	13.00
30.0m LC - SC Multimode Duplex Lead	-	15.00

FEATURES:

- Available in 62.5/125 (OM1), 50/125 (OM2) and enhanced 50/125 (OM3)
- Made with high quality LC & SC connectors
- LSOH Sheath Cable
- Individually Bagged, Labelled and Supplied with a Test Report

[Internet Express Link](#) **2107**

LC - ST Multimode Fibre Leads



DESCRIPTION	OM3	OM1/OM2
0.5m LC - ST Multimode Duplex Lead	-	4.90
1.0m LC - ST Multimode Duplex Lead	10.50	4.90
2.0m LC - ST Multimode Duplex Lead	11.00	5.20
3.0m LC - ST Multimode Duplex Lead	11.50	5.50
5.0m LC - ST Multimode Duplex Lead	12.50	6.10
10.0m LC - ST Multimode Duplex Lead	14.50	7.80
15.0m LC - ST Multimode Duplex Lead	16.50	9.40
20.0m LC - ST Multimode Duplex Lead	18.50	11.30
30.0m LC - ST Multimode Duplex Lead	-	14.50

FEATURES:

- Available in 62.5/125 (OM1), 50/125 (OM2) and enhanced 50/125 (OM3)
- Made with high quality LC & ST connectors
- LSOH Sheath Cable
- Individually Bagged, Labelled and Supplied with a Test Report

[Internet Express Link](#) **2108**

LC - MTRJ Multimode Fibre Leads



DESCRIPTION	OM3	OM1/OM2
0.5m LC - MTRJ Multimode Duplex Lead	-	12.00
1.0m LC - MTRJ Multimode Duplex Lead	15.50	15.50
2.0m LC - MTRJ Multimode Duplex Lead	16.00	12.50
3.0m LC - MTRJ Multimode Duplex Lead	16.50	13.50
5.0m LC - MTRJ Multimode Duplex Lead	17.50	15.50
10.0m LC - MTRJ Multimode Duplex Lead	19.50	17.50
15.0m LC - MTRJ Multimode Duplex Lead	21.50	19.50
20.0m LC - MTRJ Multimode Duplex Lead	23.50	21.50
30.0m LC - MTRJ Multimode Duplex Lead	-	23.50

FEATURES:

- Available in 62.5/125 (OM1), 50/125 (OM2) and enhanced 50/125 (OM3)
- Made with high quality LC & MTRJ connectors
- LSOH Sheath Cable
- Individually Bagged, Labelled and Supplied with a Test Report

[Internet Express Link](#) **2110**

MTRJ - MTRJ Multimode Fibre Leads



DESCRIPTION	OM3	OM1/OM2
0.5m MTRJ - MTRJ Multimode Duplex Lead	-	9.00
1.0m MTRJ - MTRJ Multimode Duplex Lead	11.00	8.00
2.0m MTRJ - MTRJ Multimode Duplex Lead	12.00	8.50
3.0m MTRJ - MTRJ Multimode Duplex Lead	13.00	9.50
5.0m MTRJ - MTRJ Multimode Duplex Lead	15.00	10.00
10.0m MTRJ - MTRJ Multimode Duplex Lead	18.00	12.50
15.0m MTRJ - MTRJ Multimode Duplex Lead	22.00	15.00
20.0m MTRJ - MTRJ Multimode Duplex Lead	26.00	17.50
30.0m MTRJ - MTRJ Multimode Duplex Lead	-	22.00

FEATURES:

- Available in 62.5/125 (OM1), 50/125 (OM2) and enhanced 50/125 (OM3)
- Made with high quality MTRJ connectors
- LSOH Sheath Cable
- Individually Bagged, Labelled and Supplied with a Test Report

[Internet Express Link](#) **2106**



ST - ST Singlemode Fibre Leads

DESCRIPTION	PRICE (£)
0.5m ST - ST Singlemode Duplex Lead	5.85
1.0m ST - ST Singlemode Duplex Lead	5.95
2.0m ST - ST Singlemode Duplex Lead	6.45
3.0m ST - ST Singlemode Duplex Lead	5.85
5.0m ST - ST Singlemode Duplex Lead	7.55
10.0m ST - ST Singlemode Duplex Lead	9.30
15.0m ST - ST Singlemode Duplex Lead	11.30
20.0m ST - ST Singlemode Duplex Lead	12.80
30.0m ST - ST Singlemode Duplex Lead	16.30

FEATURES:

- Made from 9/125 (OS1) LSOH cable
- Made with high quality Ceramic ST connectors
- Individually Bagged, Labelled and Supplied with a Test Report



Internet Express Link 2005



SC - SC Singlemode Fibre Leads

DESCRIPTION	PRICE (£)
0.5m SC - SC Singlemode Duplex Lead	5.95
1.0m SC - SC Singlemode Duplex Lead	6.15
2.0m SC - SC Singlemode Duplex Lead	6.50
3.0m SC - SC Singlemode Duplex Lead	6.85
5.0m SC - SC Singlemode Duplex Lead	7.65
10.0m SC - SC Singlemode Duplex Lead	9.20
15.0m SC - SC Singlemode Duplex Lead	11.00
20.0m SC - SC Singlemode Duplex Lead	12.70
30.0m SC - SC Singlemode Duplex Lead	16.00

FEATURES:

- Made from 9/125 (OS1) LSOH cable
- Made with high quality SC connectors
- Individually Bagged, Labelled and Supplied with a Test Report



Internet Express Link 2003



SC - ST Singlemode Fibre Leads

DESCRIPTION	PRICE (£)
0.5m SC - ST Singlemode Duplex Lead	5.95
1.0m SC - ST Singlemode Duplex Lead	6.25
2.0m SC - ST Singlemode Duplex Lead	6.50
3.0m SC - ST Singlemode Duplex Lead	6.95
5.0m SC - ST Singlemode Duplex Lead	7.65
10.0m SC - ST Singlemode Duplex Lead	9.40
15.0m SC - ST Singlemode Duplex Lead	11.00
20.0m SC - ST Singlemode Duplex Lead	12.50
30.0m SC - ST Singlemode Duplex Lead	16.00

FEATURES:

- Made from 9/125 (OS1) LSOH cable
- Made with high quality SC and Ceramic ST connectors
- Individually Bagged, Labelled and Supplied with a Test Report



Internet Express Link 2002



FC - SC Singlemode Fibre Leads

DESCRIPTION	PRICE (£)
1.0m FC - SC Singlemode Duplex Lead	6.75
2.0m FC - SC Singlemode Duplex Lead	7.10
3.0m FC - SC Singlemode Duplex Lead	7.45
5.0m FC - SC Singlemode Duplex Lead	8.00
10.0m FC - SC Singlemode Duplex Lead	9.70
15.0m FC - SC Singlemode Duplex Lead	18.00
20.0m FC - SC Singlemode Duplex Lead	19.00
30.0m FC - SC Singlemode Duplex Lead	21.00

FEATURES:

- Made from 9/125 (OS1) LSOH cable
- Made with high quality SC & FC connectors
- Individually Bagged, Labelled and Supplied with a Test Report



Internet Express Link 2010



FC - ST Singlemode Fibre Leads

DESCRIPTION	PRICE (£)
1.0m FC - ST Singlemode Duplex Lead	6.70
2.0m FC - ST Singlemode Duplex Lead	7.00
3.0m FC - ST Singlemode Duplex Lead	7.35
5.0m FC - ST Singlemode Duplex Lead	8.00
10.0m FC - ST Singlemode Duplex Lead	9.70
15.0m FC - ST Singlemode Duplex Lead	17.00
20.0m FC - ST Singlemode Duplex Lead	18.00
30.0m FC - ST Singlemode Duplex Lead	20.00

FEATURES:

- Made from 9/125 (OS1) LSOH cable
- Made with high quality ST & FC connectors
- Individually Bagged, Labelled and Supplied with a Test Report



Internet Express Link 2009

LC - LC Singlemode Fibre Leads



DESCRIPTION	PRICE (£)
0.5m LC - LC Singlemode Duplex Lead	10.00
1.0m LC - LC Singlemode Duplex Lead	10.40
2.0m LC - LC Singlemode Duplex Lead	10.70
3.0m LC - LC Singlemode Duplex Lead	11.00
5.0m LC - LC Singlemode Duplex Lead	11.75
10.0m LC - LC Singlemode Duplex Lead	13.50
15.0m LC - LC Singlemode Duplex Lead	15.00
20.0m LC - LC Singlemode Duplex Lead	17.00
30.0m LC - LC Singlemode Duplex Lead	22.00

FEATURES:

- Made from 9/125 (OS1) LSOH cable
- Made with high quality LC connectors
- Individually Bagged, Labelled and Supplied with a Test Report

 Internet Express Link **2011**

LC - SC Singlemode Fibre Leads



DESCRIPTION	PRICE (£)
0.5m LC - SC Singlemode Duplex Lead	8.00
1.0m LC - SC Singlemode Duplex Lead	8.30
2.0m LC - SC Singlemode Duplex Lead	8.50
3.0m LC - SC Singlemode Duplex Lead	9.00
5.0m LC - SC Singlemode Duplex Lead	9.50
10.0m LC - SC Singlemode Duplex Lead	11.25
15.0m LC - SC Singlemode Duplex Lead	13.00
20.0m LC - SC Singlemode Duplex Lead	16.00
30.0m LC - SC Singlemode Duplex Lead	19.00

FEATURES:

- Made from 9/125 (OS1) LSOH cable
- Made with high quality LC & SC connectors
- Individually Bagged, Labelled and Supplied with a Test Report

 Internet Express Link **2004**

LC - ST Singlemode Fibre Leads



DESCRIPTION	PRICE (£)
0.5m LC - ST Singlemode Duplex Lead	8.00
1.0m LC - ST Singlemode Duplex Lead	8.20
2.0m LC - ST Singlemode Duplex Lead	8.50
3.0m LC - ST Singlemode Duplex Lead	8.75
5.0m LC - ST Singlemode Duplex Lead	9.50
10.0m LC - ST Singlemode Duplex Lead	11.30
15.0m LC - ST Singlemode Duplex Lead	13.00
20.0m LC - ST Singlemode Duplex Lead	16.00
30.0m LC - ST Singlemode Duplex Lead	18.00

FEATURES:

- Made from 9/125 (OS1) LSOH cable
- Made with high quality LC & ST connectors
- Individually Bagged, Labelled and Supplied with a Test Report

 Internet Express Link **2006**

FC - LC Singlemode Fibre Leads



DESCRIPTION	PRICE (£)
1.0m FC - LC Singlemode Duplex Lead	8.95
2.0m FC - LC Singlemode Duplex Lead	9.20
3.0m FC - LC Singlemode Duplex Lead	9.50
5.0m FC - LC Singlemode Duplex Lead	10.30
10.0m FC - LC Singlemode Duplex Lead	12.00
15.0m FC - LC Singlemode Duplex Lead	16.00
20.0m FC - LC Singlemode Duplex Lead	17.00
30.0m FC - LC Singlemode Duplex Lead	22.00

FEATURES:

- Made from 9/125 (OS1) LSOH cable
- Made with high quality LC & FC connectors
- Individually Bagged, Labelled and Supplied with a Test Report

 Internet Express Link **2007**

FC - FC Singlemode Fibre Leads



DESCRIPTION	PRICE (£)
1.0m FC - FC Singlemode Duplex Lead	6.75
2.0m FC - FC Singlemode Duplex Lead	7.00
3.0m FC - FC Singlemode Duplex Lead	7.40
5.0m FC - FC Singlemode Duplex Lead	8.10
10.0m FC - FC Singlemode Duplex Lead	9.50
15.0m FC - FC Singlemode Duplex Lead	15.00
20.0m FC - FC Singlemode Duplex Lead	17.00
30.0m FC - FC Singlemode Duplex Lead	19.00

FEATURES:

- Made from 9/125 (OS1) LSOH cable
- Made with high quality FC connectors
- Individually Bagged, Labelled and Supplied with a Test Report

 Internet Express Link **2008**

Value Cat5e & Cat6 Patch Panels



DESCRIPTION	PRICE (£)
24 Way Value Cat5e UTP Patch Panel (1u)	18.50
48 Way Value Cat5e UTP Patch Panel (2u)	44.00
24 way Cat6 Value UTP Patch Panel (1u)	28.00
48 way Cat6 Value UTP Patch Panel (2u)	43.00

Our range of value Cat5e and Cat6 Patch Panels have been designed with two key principals in mind. Firstly, as with all our products quality is paramount, so these panels have been designed and tested to conform with all the relevant Cat5e or Cat6 guidelines. Secondly, we have worked closely with the manufacturers to keep the cost to an absolute minimum, meaning that you get a top grade product at quite possibly the most competitive price around.

FEATURES:

- Available in 24 and 48 ports
- High density design
- Krone style IDC punchdown blocks on the rear
- Independently verified to Cat5e standards



Internet Express Link **5009**

Cat5e Patch Panels



DESCRIPTION	PRICE (£)
16 Way Cat5e UTP Patch Panel (1u)	25.00
24 Way Cat5e UTP Patch Panel (1u)	30.00
24 Way Cat5e UTP Right Angled Panel (1u)	35.00
24 Way Cat5e Shielded Patch Panel (1u)	89.78
32 Way Cat5e UTP Patch Panel (2u)	59.50
48 Way High Density Cat5e UTP Patch Panel (1u)	55.00
48 Way Cat5e UTP Patch Panel (2u)	60.00
48 Way Cat5e UTP Patch Panel (3u)	74.50

FEATURES:

- Available in 16 ports through to 48 ports
- High density design
- Choice of colours on 24 and 48 port panels
- Krone style IDC punchdown blocks on the rear
- Independently verified to Cat5e standards



Internet Express Link **5001**

See Page 38-41 For Full Range of Tools & Test Equipment



Cat6 Patch Panels

DESCRIPTION	PRICE (£)
24 Way Cat6 UTP Patch Panel (1u)	44.00
24 Way Cat6 UTP Right Angled Patch Panel (1u)	63.33
24 Way Cat6 Shielded Patch Panel (1u)	80.00
48 Way High Density Cat6 UTP Patch Panel (1u)	70.00
48 Way Cat6 UTP Patch Panel (2u)	88.00

FEATURES:

- Available with 24 or 48 ports
- Krone style IDC punchdown blocks on the rear
- Verified to Cat6 standards



Internet Express Link **5002**

Cat5e & Cat6 Coupler Patch Panels



DESCRIPTION	PRICE (£)
24 Way Cat5e UTP Through Coupler Patch Panel (1u)	35.00
48 Way Cat5e UTP Through Coupler Patch Panel (2u)	70.00
24 Way Cat6 UTP Through Coupler Patch Panel (1u)	52.00
48 Way Cat6 UTP Through Coupler Patch Panel (2u)	144.00

FEATURES:

- Available with 24 or 48 ports
- Through Coupler design allows a plugable connection, instead of punchdown
- Verified to Cat5e and Cat6 standards



Internet Express Link **5004**

Keystone Jack Patch Panels



DESCRIPTION	PRICE (£)
24 Port Empty Keystone Jack Patch Panel Frame - Black	18.50
Cat5e Keystone Jack Outlet - Black	1.75
Cat5e Keystone Jack Outlet - White	1.75
Cat6 Keystone Jack Outlet - Black	3.40
Cat6 Keystone Jack Outlet - White	3.40
Cat6 Shielded Keystone Jack Outlet	3.95
White Shutter Keystone Jack Module Adapter - 25 x 50mm	0.75

FEATURES:

- Panel mount supplied unloaded
- Suits both Cat5e and Cat6 Jacks
- IDC point at 90° to jack



Internet Express Link **5005**

Solid Conductor Cable



DESCRIPTION	PRICE (£)
Cat5e UTP PVC 4 Pair Cable 305m Box	42.60
Cat5e UTP LSOH 4 Pair Cable 305m Box (Purple)	48.00
Cat5e Shielded PVC 4 Pair Cable 305m Box (Grey)	73.95
Cat5e Shielded LSOH 4 Pair Cable 305m Box (Grey)	88.95
Cat5e External Grade UTP Cable 305m Box (Black)	71.95
Cat6 UTP LSOH 4 Pair Cable 305m Box (Purple)	66.95
Cat6 SFTP LSOH 4 Pair Cable 305m Box (Purple)	139.95

FEATURES:

- Solid core conductor cable
- Suitable for laying horizontally (i.e. in trunking)
- Available in UTP, Shielded and LSOH
- External grade cable available (not suitable for running internally)



Internet Express Link **7001**



Excel Cat5e Modules

DESCRIPTION	PRICE (£)
Cat5e UTP Shuttered Module - 25mm x 50mm	0.99
Cat5e UTP Shuttered Module - LJ6C Size	1.20
Cat5e UTP 1 Module in Single Gang Face Plate	1.90
Cat5e UTP 2 Modules in Single Gang Face Plate	3.35
Cat5e UTP 3 Modules in Single Gang Face Plate	5.13
Cat5e UTP 3 Modules in Double Gang Face Plate	5.15
Cat5e UTP 4 Modules in Double Gang Face Plate	5.99
Cat5e UTP 6 Modules in Double Gang Face Plate	12.00
Cat5e Shielded Shuttered Module - 25mm x 50mm	4.25

FEATURES:

- Independently verified to Cat5e standards
- Built-in slide label system
- Manufactured to fit our standard faceplates
- Choice of colours available on UTP Cat5e 25mm x 50mm and LJ6C (21mm x 37mm) module

Internet Express Link **6001**

Full Range of
Switches on
Pages 58-67



Excel Cat5e Metal Module Kits

DESCRIPTION	PRICE (£)
1 x Cat5e UTP Module in polished chrome faceplate kit	6.00
2 x Cat5e UTP Module in polished chrome faceplate kit	8.15
1 x Cat5e UTP Module in polished satin brass faceplate kit	7.80
2 x Cat5e UTP Module in polished satin brass faceplate kit	8.15
1 x Cat5e UTP Module in brushed aluminium faceplate kit	7.80
2 x Cat5e UTP Module in brushed aluminium faceplate kit	8.45

FEATURES:

- Independently verified to Cat5e standards
- Built-in slide label system

Internet Express Link **6002**



Excel Cat6 Modules

DESCRIPTION	PRICE (£)
Cat6 UTP Shuttered Module - 25mm x 50mm	2.20
Cat6 UTP Shuttered Module - LJ6C Size	2.20
Cat6 UTP 1 Module in Single Gang Face Plate	2.95
Cat6 UTP 2 Modules in Single Gang Face Plate	5.95
Cat6 UTP 3 Modules in Single Gang Face Plate	8.95
Cat6 UTP 3 Modules in Double Gang Face Plate	8.95
Cat6 UTP 4 Modules in Double Gang Face Plate	10.95
Cat6 UTP 6 Modules in Double Gang Face Plate	25.00

FEATURES:

- Independently verified to Cat6 standards
- Built-in slide label system
- Manufactured to fit our standard faceplates

Internet Express Link **6006**



Voice Modules

DESCRIPTION	PRICE (£)
Secondary Voice Module - 25mm x 50mm	1.70
PABX Voice Module - 25mm x 50mm	2.05
PSTN Voice Module - 25mm x 50mm	2.30

FEATURES:

- Euro style (50x25mm) and LJ6C (37x22mm) available
- LJU sockets
- Built-in slide label system

Internet Express Link **6004**



Faceplates

DESCRIPTION	PRICE (£)
Single Gang Bevelled Faceplate	0.46
Single Gang Flat Faceplate	0.46
Double Gang Bevelled Faceplate	0.80
Double Gang Flat Faceplate	0.80
Quarter Blanks (Half Module Width)	0.09

FEATURES:

- Supplied with fixing screws
- Available either bevelled or flat
- Blanking plates available
- Manufactured to fit standard back boxes

Internet Express Link **6101**



Patch Cable

DESCRIPTION	PRICE (£)
Cat5e UTP Patch Cable 305m Boxes	72.00
<i>In Grey, Red, Green, Blue, Yellow, Black, White, Orange, Purple, Pink</i>	
Cat5e LSOH UTP Patch Cable 305m Boxes	96.00
Cat5e Shielded Patch Cable 305m Boxes	85.00
Cat6 UTP Patch Cable 305m Boxes	112.50

FEATURES:

- Compliant with current Cat5e (and Cat6 where applicable) standards
- 24 AWG stranded conductors
- Full choice of colours available
- Supplied in fast feed 305m boxes

Internet Express Link **7002**

HellermannTyton

Globally, HellermannTyton is an established and innovative leader in the provision of network infrastructure cabling solutions, offering a broad range of quality, high performance connectivity for both residential and commercial use.

HellermannTyton do not use lead based solder processes in our manufacturing and all products, where required, comply to the RoHS regulation requirements. Individual products are marked with the RoHS logo to show their compliance to the RoHS regulations

HellermannTyton MegaBand

The MegaBand range has been specifically designed to offer the user exceptional performance and value for money; with performance far exceeding the Category 5e standards for connecting hardware.



DESCRIPTION	PRICE (£)
1u 24 Port Megaband Panel	34.92
2u 48 Port Megaband Panel	69.84
MegaBand Cat5e Outlet	1.99
MegaBand Secondary Voice Outlet	2.08
MegaBand PABX Voice Outlet	3.12
Single Gang MegaBand Faceplate	0.51
Double Gang MegaBand Faceplate	0.84
MegaBand Quarter Blank	0.10
MegaBand Half Blank	0.21

FEATURES:

- Exceeds Category 5E Class D standard
- Only high quality components used
- Backward compatible with Category 5 and voice applications
- Coloured IDC labelling at rear of panel



Internet Express Link **2014**

HellermannTyton GigaBand

GigaBand is a modular Category 6 system utilising individual PCBs, giving a highly flexible solution with many extra features included as standard.



DESCRIPTION	PRICE (£)
1u 16 port GigaBand Low Density Panel	106.67
1u 24 port GigaBand High Density Panel	95.63
2u 48 port GigaBand High Density Panel	191.27
GigaBand Outlet	3.66
GigaBand Triple Outlet (no faceplate)	9.67

FEATURES:

- Exceeds Category 6 performance standard
- Backward compatible to Cat 5E and 5
- 568A or 568B wiring options



Internet Express Link **2015**

HellermannTyton Global

Global offers extra features including dual label fields for easier identification and magnifying lens covers. The four way PCB configuration allows panels to be populated with only the number of ports required.

HellermannTyton Global Cat5e



DESCRIPTION	PRICE (£)
1u 12 port Global Cat5e Panel	44.44
1u 16 port Global Cat5e Panel	51.59
1u 24 port Global Cat5e Panel	71.43
2u 32 port Global Cat5e Panel	113.33
2u 48 port Global Cat5e Panel	142.86
Cat 5E Global 4 Way Outlet	13.57

FEATURES:

- High density panel (24 ports per 1U)
- Magnifying ID label covers top & bottom
- 568A or 568B wiring options
- Exceeds all ISO/IEC JTC 1/SC 25/WG3 performance standards for Category 6



Internet Express Link **2016**

HellermannTyton Global Cat6



DESCRIPTION	PRICE (£)
1u 12 port Global Cat6 Panel	45.23
1u 16 port Global Cat6 Panel	51.59
1u 24 port Global Cat6 Panel	75.00
2u 32 port Global Cat6 Panel	108.33
2u 48 port Global Cat6 Panel	150.00
Cat 6 Global 4 Way Outlet	14.26

FEATURES:

- High density panel (24 ports per 1U)
- Magnifying ID label covers top & bottom
- 568A or 568B wiring options
- Exceeds all ISO/IEC JTC 1/SC 25/WG3 performance standards for Category 6



Internet Express Link **2017**

HellermannTyton Alpha Snap

Alpha Snap is a modular Category 5E system utilising individual PCBs, giving a highly flexible solution with many extra features included as standard.



HellermannTyton Alpha Snap Panels

DESCRIPTION	PRICE (£)
<i>Alpha Snap Cat5e Panels</i>	
24 port Alpha Snap Cat5e High Density Panel	87.30
48 port Alpha Snap Cat5e High Density Panel	174.60
1u 24 Alpha Snap port Jack to Jack Panel	130.00
2u 32 Alpha Snap port Jack to Jack Panel	250.00

FEATURES:

- Exceeds Category 5E performance standard
- All modules are individually removable and replaceable
- 568A or 568B wiring options
- Includes Rack-Snap inserts
- Includes aluminium rear cable management

[Internet Express Link](#) **2018**



HellermannTyton Alpha Snap Outlets

DESCRIPTION	PRICE (£)
<i>Alpha Snap Cat5e Outlets</i>	
Alpha Snap Cat5e Outlet	3.41
Alpha Snap Triple Cat5e Outlet (no faceplate)	9.21
Alpha Snap Cat5e Low Profile Outlet	3.59
<i>Alpha Snap Voice Outlets</i>	
Alpha Snap Voice Secondary Module	4.80
Alpha Snap Voice PABX Mastered	5.81
Alpha Snap Voice Fully Mastered	6.50

FEATURES:

- Fully modular PCB's
- Can be used in conjunction with any HellermannTyton Cat 5E patch panel
- Patented slide label system and software available
- 568A or 568B wiring options
- LJJ versions available (secondary PABX and master)
- Rear cable tie point

[Internet Express Link](#) **2019**

Alpha Snap Faceplates



DESCRIPTION	PRICE (£)
Single Gang Alpha Snap Bevelled Faceplate	0.73
Double Gang Alpha Snap Bevelled Faceplate	1.33
Single Gang Alpha Snap Flat Faceplate	0.90
Double Gang Alpha Snap Flat Faceplate	1.60
Alpha Snap Quarter Blank	0.12
Alpha Snap Half Blank	0.30

FEATURES:

- White ABS plastic
- Accepts up to 2 Alpha Snap outlets in a single gang
- Accepts up to 4 Alpha Snap outlets in a double gang

[Internet Express Link](#) **2020**



HellermannTyton Cable

DESCRIPTION	PRICE (£)
305m 4 pr Cat5e PVC Cable Grey Sheath	54.46
305m 4 pr Cat5e PVC Cable Blue Sheath	54.46
305m 4pr Cat5e LSZH Cable Violet Sheath	66.84
305m 4pr Cat6 PVC Grey Sheath	109.38
305m 4pr Cat6 LSZH Violet Sheath	136.94

FEATURES:

- HellermannTyton Cat5e & Cat6 cable suitable for running horizontally and vertically

[Internet Express Link](#) **2021**

HellermannTyton EcoBand



DESCRIPTION	PRICE (£)
24 port Eco Cat5e Patch Panel UTP	58.33
24 port Eco Cat5e Patch Panel FTP	108.33
1u 48 Port Cat5e Eco Panel	111.11
1u 48 Port Cat6 Eco Panel	134.92
1u 50 Way Eco Voice Panel	78.00
1u 25 Way Eco Voice Panel	50.00

FEATURES:

- Horizontal termination for easier installation
- High density - Up to 48 ports in 1U
- Built-in rear cable management
- Screen printed numbering system

[Internet Express Link](#) **2022**

ADC Krone

ADC KRONE is a world leader in providing global network infrastructure products and services that enable the profitable delivery of high-speed Internet, video, data, and voice services to residential, business and mobile subscribers worldwide.

ADC KRONE's industry-leading portfolio of network infrastructure solutions helps our customers to provide advanced, differentiating services to meet their own customers' unrelenting demand for bandwidth along with their employee's need for instant, reliable access to business critical information.

TrueNet Cat5e PCB Patch Panels

TrueNet® Category 5e PCB patch panels are designed to minimise deployment time and maximise connection strength. The LSA-PLUS® technology allows gas tight terminations onto horizontal PCB boards. The design of the PCB board ensures the terminations are presented to the installer for fast termination. Superior cable management is offered through the innovative "fish-tail" design on the back of the panel which includes various tie-off points. PCB panels are available in standard 1U 24 port and high density 1.5U 48 port formats.



DESCRIPTION	PRICE (£)
24 Way TrueNet Cat5e PCB UTP Patch Panel (1u)	70.00
24 Way TrueNet Cat5e PCB FTP Shielded Patch Panel (1u)	122.98
48 Way TrueNet Cat5e PCB UTP Patch Panel (1.5u)	168.52
48 Way TrueNet Cat5e PCB FTP Shielded Patch Panel (1.5u)	246.00

FEATURES:

- Performance exceeding Category 5e specifications up to 100MHz
- Complete with IDC dust protection and fixing kit
- Fishtail design to vary cable management to suit installation requirement
- Complete

[Internet Express Link](#) **5440**

TrueNet Cat5e HK Patch Panels

The modular Category 5e panel utilises the high performing HK keystone jack, which uses a punch-down format for swift terminations. Modular panels offer complete flexibility within the communications room and with the HK panel, flexibility is further enhanced by the 1U 16, 24 and high density 32 port formats.



DESCRIPTION	PRICE (£)
16 Port RJ-K HK UTP Patch Panel 1U	70.26
24 Port RJ-K HK UTP Patch Panel 1U	98.76
32 Port RJ-K HK UTP Patch Panel 1U	135.58

FEATURES:

- Independently verified at a component level
- HK modular panels offer complete flexibility and high port density
- High-speed deployment time reduces associated installation costs

[Internet Express Link](#) **5441**

ADC Krone Cat6 PCB Patch Panels

The PCB patch panel delivers 24 UTP ports in a 19" 1U format. Designed with 4 vertical punch down blocks the panel ensures swift terminations and consistently high Category 6 component, channel and permanent link performance.



DESCRIPTION	PRICE (£)
24 Way ADC Krone Cat6 PCB UTP Patch Panel (1u)	140.84

FEATURES:

- PCB style punch down blocks for swift efficient terminations
- Supports Gigabit Ethernet up to 250MHz

[Internet Express Link](#) **5442**

ADC Krone Cat6 KM8 Patch Panels

The modular Category 6 panel utilises the high performing KM8® keystone jack. Modular panels offer complete flexibility within the communications room and with the KM8® panel flexibility is further enhanced by the 1U 16, 24 and high density 32 port formats



DESCRIPTION	PRICE (£)
24 Way ADC Krone Cat6 KM8 UTP Patch Panel	131.14
24 Way ADC Krone Cat6 KM8 FTP Patch Panel	161.74

FEATURES:

- KM8® modular panels offer complete flexibility and high port density
- Fully interoperable and backwards compatible
- High-speed deployment time reduces associated installation costs

[Internet Express Link](#) **5443**

ADC Krone Voice Patch Panels

The 1U Voice Patch Panel range from ADC KRONE comprises two versions for use with the multipair voice cables – the 25 port RJ45 version or the higher density 50 port RJ45 version.

These products are an ideal way to integrate PBX or other voice circuits into a standard structured cabling system.



DESCRIPTION	PRICE (£)
25 Port ADC Krone Voice Patch Panel	51.67
50 Port ADC Krone Voice Patch Panel	72.25

FEATURES:

- Available in 25 and 50 port variants, both 1U 19"
- Designed specifically to integrate voice circuits into standard structured cabling systems
- Expansive cable management for maximum cable protection

[Internet Express Link](#) **5444**

ADC Krone Cat5e RJ-K LN Wallplates



DESCRIPTION	PRICE (£)
ADC Krone RJ-K LN Cat5e UTP Shuttered Wallplate - Single	4.92
ADC Krone RJ-K LN Cat5e UTP Shuttered Wallplate - Double	8.20
ADC Krone RJ-K LN Cat5e UTP Shuttered Wallplate - Quad	15.57
ADC Krone RJ-K LN Cat5e FTP Shuttered Wallplate - Single	7.40
ADC Krone RJ-K LN Cat5e FTP Shuttered Wallplate - Double	13.00

FEATURES:

- Performance exceeding Category 5e specifications up to 100MHz
- Single, double and quad variants available
- Comes complete with jacks, faceplate and fixings in one box
- Swift terminations onto LSA-PLUS® IDC's

[Internet Express Link](#) **5445**

ADC Krone Cat5e RJ-K CL Modules



DESCRIPTION	PRICE (£)
ADC Krone RJ-K CL Cat5e UTP Module	3.41
ADC Krone RJ-K CL Cat5e STP Module	4.85
ADC Krone RJ-K CL Cat5e STP Angled Module	4.41
ADC Krone RJ-K CL 25x50 Flat Adapter (pack of 20)	7.00
ADC Krone RJ-K CL LJ6C Flat Adapter (pack of 20)	6.58
ADC Krone RJ-K CL 25x50 Angled Adapter (pack of 20)	7.07
ADC Krone RJ-K CL LJ6C Angled Adapter (pack of 20)	8.29

FEATURES:

- Performance exceeding Category 5e specifications up to 100MHz
- Low profile design, ideal for shallow back box applications

[Internet Express Link](#) **6230**

ADC Krone Cat6 Modules



DESCRIPTION	PRICE (£)
ADC Krone KM8 Cat6 UTP Module	4.58
ADC Krone KM8 Cat6 STP Shielded Module	5.76
ADC Krone RJ-K CL Cat6 UTP Module	4.97
ADC Krone RJ-K CL Cat6 STP Angled Module	5.75

FEATURES:

- Performance exceeding Category 6 specifications up to 250MHz
- KM8 cable managed jack in keystone format
- CL low profile design ideally suited to shallow trunking and floor boxes

[Internet Express Link](#) **6231**

TrueNet® Category 6 KM8® and CL jacks from ADC KRONE offer high performance and flexibility.

The KM8 jack adopts the keystone design, the global standard ensuring compatibility with the diverse range of faceplates systems throughout the world. The cable manager holds cable pairs in place up to the termination point. This prevents untwisting and buckling of the conductors thereby guaranteeing performance for every installation.

The CL jack is a low profile design which requires less than 35mm of depth (including bend radius of Category 6 cable) making it the perfect solution for shallow trunking, back boxes and floor box applications. In addition, the CL comes complete with an integrated spring dust shutter.

TrueNet Category 6 jacks are compliant to the Category 6 standard at a component level and come complete with third party certification. Component compliance is the only way to guarantee true performance. When used alongside TrueNet Category 6 component compliant cables, panels and cords complete infrastructure performance is guaranteed

ADC Krone Faceplates



DESCRIPTION	PRICE (£)
ADC Krone Single 25 x 50 Bevelled Faceplate	1.03
ADC Krone Double 25 x 50 Bevelled Faceplate	1.53
ADC Krone Single Gang 25 x 50 Flat Faceplate (Pack of 10)	13.66
ADC Krone Double Gang 25 x 50 Flat Faceplate (Pack of 10)	20.20
ADC Krone Quarter Blanks (Pack of 20)	7.20

FEATURES:

- Fits standard wallboxes
- Double Gang plate will accept up to 4 Alpha Snap modules
- Sold in packs of 10

[Internet Express Link](#) **6232**

ADC Krone Solid Core Cable



DESCRIPTION	PRICE (£)
ADC Krone Cat5e UTP PVC Cable - Grey (305m Box)	69.53
ADC Krone Cat5e UTP LSOH Cable - Orange (305m Box)	73.41
ADC Krone Cat5e FTP Shielded PVC Cable - Grey (305m Box)	88.05
ADC Krone Cat5e FTP Shielded LSOH Cable - (305m Box)	100.33
ADC Krone Cat6 UTP PVC Cable - Grey (305m Box)	101.57
ADC Krone Cat6 UTP LSOH Cable - Orange (305m Box)	107.80

FEATURES:

- 24 AWG solid core conductor cable
- For laying horizontally and punching down
- PVC cable with grey sheath, LSOH with orange sheath

[Internet Express Link](#) **7107**



Excel Cat6a Products

DESCRIPTION	PRICE (£)
Excel Cat6a Toolless Keystone Jack	6.10
Excel FFTP Cat6a LSOH Cable - 500mm/Blue	206.00
2mt Cat6a FFTP LSOH Patch Lead	6.20
3mt Cat6a FFTP LSOH Patch Lead	7.00
5mt Cat6a FFTP LSOH Patch Lead	8.60

FEATURES:

- Excel Category 6a – Augmented Category 6 – products, take the performance capabilities of copper infrastructure to new levels. Designed to the current ISO and EIA/TIA standards for Class Ea augmented Category 6a performance these products are intended to deliver reliable, high network performance including support of emerging applications such as 10GBase-T, 10 Gigabit Ethernet.

Internet Express Link **5900**

Category 6a or 10 Gig – is there a difference?

In a word, the answer is a resounding ‘yes’.

Category 6a – as a standard – defines a set of performance criteria for individual and combined cabling components, which must be adhered to by system manufacturers, designers and integrators.

Once correctly installed and tested, a Category 6a system provides a copper cabling infrastructure capable of transmitting data at speeds of 10 Gigabit, as well as other applications commonly found in the corporate LAN or data centre including all other Ethernet applications and voice, for example.

However, in the same way as a motorway is not the only way to travel from one destination to another, Category 6a is not the only way to support 10 Gigabit Ethernet within your organization.

Category 6 can support this application, as can optical fibre cable, each of which has its own pro's and con's which include distance limitations. Such information should be carefully considered when assessing the suitability of legacy cabling or the choice of new cabling where 10 Gigabit applications are required.



Full PatchSee Range on Page 6

PatchSee Cat6a RJ45 Patch Leads

DESCRIPTION	PRICE (£)
0.6m PatchSee RJ45 Cat6a Lead	4.18
1.2m PatchSee RJ45 Cat6a Lead	4.46
1.5m PatchSee RJ45 Cat6a Lead	4.92
2.1m PatchSee RJ45 Cat6a Lead	5.39
3.1m PatchSee RJ45 Cat6a Lead	6.13
4.9m PatchSee RJ45 Cat6a Lead	7.61

FEATURES:

- Conforms to EIA/TIA 568-B2.2-10 category 6a
- 25 year guarantee for use in category 6a channels interoperable with any cabling system
- Plastic cross web unshielded (UTP) and individually foil shielded pairs (FTP)

Internet Express Link **5902**

ADC Krone CopperTen



DESCRIPTION	PRICE (£)
24 Port ADC Krone CopperTen Patch Panel	178.00
ADC Krone CopperTen RJ45 Module	5.85
305mt ADC Krone CopperTen LSZH Cable	185.00
1mt ADC Krone CopperTen LSZH Patch Lead	6.65
2mt ADC Krone CopperTen LSZH Patch Lead	7.85
3mt ADC Krone CopperTen LSZH Patch Lead	9.15
5mt ADC Krone CopperTen LSZH Patch Lead	11.65

FEATURES:

- ADC KRONE's CopperTen™ system is the world's first UTP structured cabling system with the necessary characteristics to enable 10Gbps Ethernet transmission over a full 100 metres. It meets the industry's most stringent requirements: IEEE 802.3an, TIA 568 B.2 Addendum 10 and ISO/IEC 11801 Class E ed.2.1

Internet Express Link **5903**

HellermannTyton Deca10



DESCRIPTION	PRICE (£)
Cat6A Jack sold in packs of 12 pieces	104.88
Cat6A S-FTP Cable per 500 meter drum	287.59
Cat6A Sliding Panel unloaded 1U 24 ports	38.00
Cat6A Fixed Panel unloaded 1U 24 ports	37.27
1m Cat 6A patch lead Shielded grey LSOH Sheath	12.98
2m Cat 6A patch lead Shielded grey LSOH Sheath	15.85
3m Cat 6A patch lead Shielded grey LSOH Sheath	18.74
4m Cat 6A patch lead Shielded grey LSOH Sheath	21.62
5m Cat 6A patch lead Shielded grey LSOH Sheath	24.50

FEATURES:

- HellermannTyton's new Deca10 system offers both copper and fibre products to support your 10G installation; making it ideally suited to Data Centres, Server Farms, Storage Area Networks (SAN), High Performance Cluster (HPC) Networks and Work Station Environments (WSE).

Internet Express Link **5904**

CW1308 - Internal With Earth



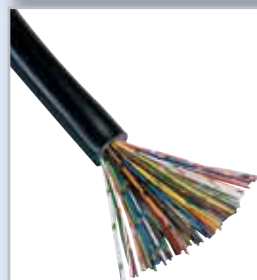
DESCRIPTION	PRICE (£)
20 Pair CW1308 Cable with Earth (Price Per Metre)	1.06
32 Pair CW1308 Cable with Earth (Price Per Metre)	1.79
40 Pair CW1308 Cable with Earth (Price Per Metre)	2.05
50 Pair CW1308 Cable with Earth (Price Per Metre)	2.20
100 Pair CW1308 Cable with Earth (Price Per Metre)	3.85
160 Pair CW1308 Cable with Earth (Price Per Metre)	5.58
200 Pair CW1308 Cable with Earth (Price Per Metre)	7.25
320 Pair CW1308 Cable with Earth (Price Per Metre)	12.84

FEATURES:

- Cut to length service available on 20 pair and above
- Choice of reel sizes
- Low smoke and fume as standard

 Internet Express Link **6201**

CW1308B - Internal/External With Earth



DESCRIPTION	PRICE (£)
10 Pair CW1308 Cable with Earth (Price Per Metre)	0.85
20 Pair CW1308 Cable with Earth (Price Per Metre)	1.30
50 Pair CW1308 Cable with Earth (Price Per Metre)	2.51
100 Pair CW1308 Cable with Earth (Price Per Metre)	4.48
200 Pair CW1308 Cable with Earth (Price Per Metre)	8.83

FEATURES:

- Cut to length service available
- Internal/external grade cable
- Black LSOH outer sheath
- Integral 1.38mm earth conductor

 Internet Express Link **6202**

CW1128 - External



DESCRIPTION	PRICE (£)
5 Pair CW1128 0.5mm (Price Per Metre)	0.47
10 Pair CW1128 0.5mm (Price Per Metre)	0.71
20 Pair CW1128 0.5mm (Price Per Metre)	1.25
50 Pair CW1128 0.5mm (Price Per Metre)	2.59
100 Pair CW1128 0.5mm (Price Per Metre)	4.51
5 Pair CW1128 0.9mm (Price Per Metre)	0.90
10 Pair CW1128 0.9mm (Price Per Metre)	1.40
20 Pair CW1128 0.9mm (Price Per Metre)	3.55

FEATURES:

- Cut to length service available
- UV and moisture resistant
- Choice of conductor size

 Internet Express Link **6203**


CW1128/1198 Armoured External Cable



DESCRIPTION	PRICE (£)
5 Pair CW1128/1198 (Price Per Metre)	1.48
10 Pair CW1128/1198 (Price Per Metre)	1.72

FEATURES:

- Armoured with steel wire
- UV and Moisture resistant
- Suitable for direct burial
- 0.5mm conductor size

 Internet Express Link **6206**

Flat Modular Telephone Cable



DESCRIPTION	PRICE (£)
4 Core Flat Modular Cable (100m Drum)	19.00
6 Core Flat Modular Cable (100m Drum)	23.00
8 Core Flat Modular Cable (100m Drum)	26.00

FEATURES:

- Available in 100m reels
- Flat cable for use with RJ11 and BT plugs

 Internet Express Link **6204**

Jumper Wire - CW1109



DESCRIPTION	PRICE (£)
Blue/Yellow Jumper Wire	38.00
Black/Yellow Jumper Wire	38.00
Black/Green Jumper Wire	38.00
Red/Blue Jumper Wire	38.00
Red/White Jumper Wire	38.00
Orange/White Jumper Wire	38.00

FEATURES:

- Supplied in pairs
- 0.5mm solid core conductor
- Supplied on 500m reels

 Internet Express Link **6205**





250 Series Connection Box

DESCRIPTION

251A Boxcon (50 Pairs)
37b Jumper Ring

PRICE (£)

8.50
0.15

FEATURES:

- Suits all terminal strips
- Internal clearance 70mm
- Dimensions, 210 x 160 x 90mm
- Supplied with 4 jumper rings and earth post



[Internet Express Link](#) **6221**



300 Series Connection Box

DESCRIPTION

301A 10 Way Box Con
Krone 301A 10 Way Box Con
37b Jumper Ring

PRICE (£)

9.50
12.99
0.15

FEATURES:

- Suits all terminal strips
- Internal clearance 90mm
- Dimensions, 320 x 210 x 120mm
- Supplied with earth post



[Internet Express Link](#) **6207**



500 Series Connection Boxes

DESCRIPTION

510 Boxcon (340 Pairs)
520 Boxcon (690 Pairs)
530 Boxcon (1020 Pairs)
5 Way Backmount Frame

PRICE (£)

115.00
151.00
241.00
18.21

FEATURES:

- Industry standard footprint
- Extra back mounts increase capacity
- Supplied with 4 jumper rings



[Internet Express Link](#) **6208**



108a Distribution Frame

DESCRIPTION

108a Dual Distribution Frame (1380 Pairs)

PRICE (£)

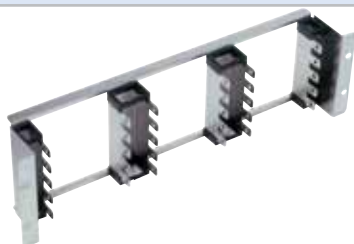
185.00

FEATURES:

- Dual Vertical
- Light Weight
- Wall Mounting or Free Standing



[Internet Express Link](#) **6220**



Sub Rack Termination Strip Carrier

DESCRIPTION

3u Sub Rack Flat
3u Sub Rack Recessed
4u Sub Rack Flat
4u Sub Rack Recessed

PRICE (£)

42.85
35.71
50.00
50.00

FEATURES:

- 3u version has 150 pair capacity
- 4u version has 180 pair capacity
- Flat or recessed versions
- Suits all terminal strips



[Internet Express Link](#) **6209**



Termination Strips

DESCRIPTION

237A 10 Pair Disconnection Strip
51A Designation Strip
237E 10 Pair Earth Terminal Strip
Krone Style Punch Down Tool

PRICE (£)

1.60
0.49
5.95
9.95

FEATURES:

- Suits 22-26 AWG conductors
- Up to 2 wires per contact
- Full range of accessories available



[Internet Express Link](#) **6210**



19" Voice Panels

DESCRIPTION

25 Port, 3 Pair, 1u RJ45 Voice Panel
50 Port, 3 Pair, 1u RJ45 Voice Panel

PRICE (£)

24.75
49.50

FEATURES:

- Integral rear cable management
- High density 50 Port 1u port design
- Set of cage nuts and bolts included
- Up to 3 pairs per RJ45 socket



[Internet Express Link](#) **6211**



Line Jack Units - 2 Series

DESCRIPTION	PRICE (£)
2/1A PSTN Surface Mount Line Jack Unit	1.65
2/2A PABX Surface Mount Line Jack Unit	1.19
2/3A Secondary Surface Mount Line Jack Unit	0.92

FEATURES:

- Choice of Secondary, PABX or PSTN
- Supplied with back box
- Right hand latch
- Dimensions 68 x 68 x 29mm (with back box)

Internet Express Link **6212**



Line Jack Units - 3 Series

DESCRIPTION	PRICE (£)
3/1A PSTN Flush Mount Line Jack Unit	1.65
3/2A PABX Flush Mount Line Jack Unit	1.33
3/3A Secondary Flush Mount Line Jack Unit	1.07
21mm LB3 Back Box	0.72

FEATURES:

- Choice of Secondary, PABX or PSTN
- Supplied with back box
- Right hand latch
- Dimensions 86 x 86 x 8mm
- Fits standard single gang patress box

Internet Express Link **6213**



Line Jack Units - 4 Series

DESCRIPTION	PRICE (£)
4/1A PSTN Flush Mount Line Jack Unit	3.09
4/2A PABX Flush Mount Line Jack Unit	2.29
4/3A Secondary Flush Mount Line Jack Unit	1.94

FEATURES:

- Choice of Secondary, PABX or PSTN
- Supplied with back box
- Right hand latch
- Dimensions 86 x 86 x 8mm
- Fits standard single gang patress box

Internet Express Link **6214**



Line Adapters/Voice Converters

DESCRIPTION	PRICE (£)
Secondary Voice Adapter	0.80
PABX Master Voice Adapter	1.30
PSTN Full Master Voice Adapter	2.35

FEATURES:

- Choice of Secondary, PABX or PSTN
- Supplied with a short tail

Internet Express Link **4401**



Extension Leads and Line Cords

DESCRIPTION	PRICE (£)
3m Telephone Extension Lead	2.35
5m Telephone Extension Lead	2.55
10m Telephone Extension Lead	4.75
15m Telephone Extension Lead	6.35
15m Telephone Extension Reel	7.80
3m Telephone Line Cord (Plug - Plug)	2.40
5m Telephone Line Cord (Plug - Plug)	2.70
77A - 3 Pair In-Line Connection Box	1.45
78A - 4 Pair In-Line Connection Box	1.85

FEATURES:

- Choice of lengths and connector types
- Individually bagged

Internet Express Link **4403**



Telephone Accessories

DESCRIPTION	PRICE (£)
ADSL Microfilter	2.50
10/3A Line Jack Double Adapter	1.95
RJ11 4 Position Plug (Pack of 100)	10.00
RJ11 6 Position Plugs (Pack of 100)	11.50
BT Style 631A Plugs (Pack of 100)	20.00
BT Style 431A Plugs (Pack of 100)	20.00

FEATURES:

- Full range of telephone accessories

Internet Express Link **6215**



390mm Deep Wall Mounted Cabinet

DESCRIPTION	PRICE (£)
6u 390mm Deep Wall Mounted Cabinet	62.00
9u 390mm Deep Wall Mounted Cabinet	75.00
12u 390mm Deep Wall Mounted Cabinet	95.00
15u 390mm Deep Wall Mounted Cabinet	110.00
18u 390mm Deep Wall Mounted Cabinet	118.00
21u 390mm Deep Wall Mounted Cabinet	120.00

These small wall cabinets are manufactured by one of the most respected cabinet manufacturers in the industry. They are lightweight and very versatile with 300mm of internal working space - perfect for mounting panels, switches and other 19" rackmount equipment. The smoked safety glass front door is lockable, to help protect the valuable equipment inside. Gland plates are located on the top and bottom, to allow for easy cable entry.

FEATURES:

- Lockable/removable side panels
- Adjustable 19" profiles at the front
- Lockable glass front door
- Cable access holes with gland plate top and bottom



Internet Express Link **4001**

Full Range of
Switches on
Pages 58-67



500mm Deep Wall Mounted Cabinet

DESCRIPTION	GREY	BLACK
6u 500mm Deep Wall Mounted Cabinet	86.00	91.00
9u 500mm Deep Wall Mounted Cabinet	89.00	94.00
12u 500mm Deep Wall Mounted Cabinet	99.00	104.00
15u 500mm Deep Wall Mounted Cabinet	120.00	125.00
18u 500mm Deep Wall Mounted Cabinet	142.00	147.00
21u 500mm Deep Wall Mounted Cabinet	150.00	155.00

FEATURES:

- Lockable/removable side panels
- Adjustable 19" profiles front and rear
- Lockable glass front door
- Cable access holes with gland plate top and bottom



Internet Express Link **4002**



600mm Deep Wall Mounted Cabinet

DESCRIPTION	PRICE (£)
6u 600mm Deep Wall Mounted Server Cabinet	100.00
9u 600mm Deep Wall Mounted Server Cabinet	115.00
12u 600mm Deep Wall Mounted Server Cabinet	125.00
15u 600mm Deep Wall Mounted Server Cabinet	135.00
18u 600mm Deep Wall Mounted Server Cabinet	142.00
21u 600mm Deep Wall Mounted Server Cabinet	150.00

FEATURES:

- Lockable/removable side panels
- Adjustable 19" profiles front and rear
- Lockable glass front door
- Suitable for most shallow servers



Internet Express Link **4003**



550mm Deep Two Part Wall Cabinet

DESCRIPTION	PRICE (£)
6u 600mm wide x 550mm Deep 2 Part Cabinet	115.00
9u 600mm wide x 550mm Deep 2 Part Cabinet	120.00
12u 600mm wide x 550mm Deep 2 Part Cabinet	125.00
15u 600mm wide x 550mm Deep 2 Part Cabinet	130.00
18u 600mm wide x 550mm Deep 2 Part Cabinet	135.00

FEATURES:

- 550mm deep external depth
- Lockable Perspex front door in steel surround
- 100mm detachable rear section (with lift off hinges)
- Pair of 19" adjustable mounting profiles
- Cable access holes with gland plates top and bottom



Internet Express Link **4004**



220mm Deep Hinged Wall Brackets

DESCRIPTION	PRICE (£)
2u 220mm Deep Hinged Wall Bracket	24.93
4u 220mm Deep Hinged Wall Bracket	26.73
6u 220mm Deep Hinged Wall Bracket	30.20
8u 220mm Deep Hinged Wall Bracket	32.90

FEATURES:

- Open frame unit
- Comes complete with top and bottom covers
- Suitable for patch panels and small switches



Internet Express Link **4008**

Patching Cabinets

Exclusive to Comms Express, are our small Patching Cabinets and Patching Cabinet Kits. These cabinets are slimline with a depth less than 250mm, available in 4u and 6u sizes. These cabinets are ideal for classroom or small office installation



DESCRIPTION	PRICE (£)
4u 220mm Deep Wall Mounted Cabinet	59.95
6u 250mm Deep Wall Mounted Cabinet	64.95

FEATURES:

- Fixed side panels
- Lockable perspex front door
- Cable access holes with gland plate top and bottom
- Side ventilation

 Internet Express Link **4007**

Ideal for
Education

Patching Cabinets Kits

These Patching Cabinet Kits have been created to provide a cost effective and space saving solution for all small installations. The 24 port switch has been specifically sourced to fit these shallow depth cabinets



DESCRIPTION	PRICE (£)
4u 220mm Patching Cabinet Kits, Includes 24 Port Patch Panel and:	
8 Port 10/100 Switch	84.00
24 Port 10/100 Switch	110.00
6u 250mm Patching Cabinet Kits, Includes 24 Port Patch Panel and:	
8 Port 10/100 Switch	91.00
24 Port 10/100 Switch	118.00

FEATURES:

- Ideal for small classroom or office installations
- Finished in black
- Rack suits shallow 19" equipment

 Internet Express Link **3020**

Wall Cabinet PDU's



DESCRIPTION	PRICE (£)
4 Way Horizontal PDU	27.00
5 Way Horizontal PDU	32.50
6 Way Horizontal PDU	33.00

FEATURES:

- Horizontally mounting
- Illuminated and shrouded switch
- 3mt input lead terminated with BS1363 13amp plug

 Internet Express Link **4201**

Wall Cabinet Shelves



DESCRIPTION	PRICE (£)
185mm Deep Front Mounting Modem Shelf (1u)	13.65
400mm Deep Front Mounting Modem Shelf (2u)	17.60
400mm Deep Heavy Duty Front Mounting Modem Shelf (3u)	22.30

FEATURES:

- Choice of depths
- Maximum load of 20kg
- Compatible with all wall cabinets

 Internet Express Link **4202**

Wall Cabinet Accessories



DESCRIPTION	PRICE (£)
4 Ring Horizontal Cable Tidy Bar	5.50
M6 Cage Nuts & Bolts (50 pack)	5.70
1U Brush Strip Panel Black	15.08
2U Brush Strip Panel Black	19.69
1U Blanking Panel	6.23
2U Blanking Panel	6.96

FEATURES:

- Full range of wall cabinet accessories
- Compatibility assured on all wall cabinets

 Internet Express Link **4203**

Free Delivery on
Floor Standing
Cabinets



600mm Deep Cabinets (600mm Wide)

DESCRIPTION	LIGHT GREY	BLACK	DARK GREY
12u 600 x 600 Data Cabinet	215.00	240.00	240.00
15u 600 x 600 Data Cabinet	220.00	-	-
18u 600 x 600 Data Cabinet	226.00	251.00	251.00
22u 600 x 600 Data Cabinet	249.00	-	345.00
27u 600 x 600 Data Cabinet	252.00	277.00	277.00
42u 600 x 600 Data Cabinet	304.00	339.00	339.00
47u 600 x 600 Data Cabinet	314.00	350.00	350.00

FEATURES:

- Lockable aesthetically pleasing framed glass door
- Adjustable 19" profiles front and rear
- Lockable lift-off side and rear panels
- Removable gland plates on cabinet roof
- Maximum space between front and rear profiles is 490mm



Internet Express Link **4101**

800mm Deep Cabinets (600mm Wide)

DESCRIPTION	LIGHT GREY	BLACK	DARK GREY
12u 600 x 800 Data Cabinet	225.00	250.00	250.00
18u 600 x 800 Data Cabinet	247.00	272.00	272.00
22u 600 x 800 Data Cabinet	249.00	-	376.00
27u 600 x 800 Data Cabinet	263.00	288.00	288.00
42u 600 x 800 Data Cabinet	314.00	339.00	339.00
47u 600 x 800 Data Cabinet	325.00	350.00	350.00

FEATURES:

- Lockable aesthetically pleasing framed glass door
- Adjustable 19" profiles front and rear
- Lockable lift-off side and rear panels
- Removable gland plates on cabinet roof
- Maximum space between front and rear profiles is 690mm



Internet Express Link **4102**



600mm Deep Cabinets (800mm Wide)

DESCRIPTION	LIGHT GREY	BLACK	DARK GREY
22u 800 x 600 Data Cabinet	277.00	-	398.00
27u 800 x 600 Data Cabinet	304.00	329.00	329.00
42u 800 x 600 Data Cabinet	355.00	380.00	380.00
47u 800 x 600 Data Cabinet	366.00	391.00	391.00

FEATURES:

- Lockable aesthetically pleasing framed glass door
- Adjustable 19" profiles front and rear
- Lockable lift-off side and rear panels
- Removable gland plates on cabinet roof
- Maximum space between front and rear profiles is 490mm



Internet Express Link **4103**

800mm Deep Cabinets (800mm Wide)

DESCRIPTION	LIGHT GREY	BLACK	DARK GREY
22u 800 x 800 Data Cabinet	280.00	-	370.00
27u 800 x 800 Data Cabinet	314.00	339.00	339.00
42u 800 x 800 Data Cabinet	366.00	391.00	391.00
47u 800 x 800 Data Cabinet	376.00	401.00	401.00

FEATURES:

- Lockable aesthetically pleasing framed glass door
- Adjustable 19" profiles front and rear
- Lockable lift-off side and rear panels
- Removable gland plates on cabinet roof
- Maximum space between front and rear profiles is 690mm



Internet Express Link **4104**

Plinths



DESCRIPTION	PRICE (£)
600mm x 600mm x 100mm Plinth	49.59
600mm x 800mm x 100mm Plinth	55.95
800mm x 600mm x 100mm Plinth	55.95
800mm x 800mm x 100mm Plinth	63.93
600mm x 900mm x 100mm Plinth with Stabilising Plate	96.03
600mm x 1000mm x 100mm Plinth with Stabilising Plate	112.03
800mm x 900mm x 100mm Plinth with Stabilising Plate	96.03
800mm x 1000mm x 100mm Plinth with Stabilising Plate	112.03

FEATURES:

- Improved cable entry to cabinet
- Removable trim plates
- Available with stabiliser plate for server cabinets



Internet Express Link **4208**

Prism PI Server Cabinets

Prism Data Cabinets is one of the only self sufficient enclosure manufacturers within the UK. Prism have been manufacturing enclosures for the data, audio and server installation market for over 7 years and now ships over 1,000 cabinets per month establishing itself as one of the market leaders.

Prism's reputation for quality has been demonstrated by winning contracts for installation of cabinets in blue-chip institutions such as BP, Norwich Union and Bank of Tokyo Mitsubishi.



Also Available in
Flat-Pack for an
Additional £50

1000mm Deep Prism PI Server Racks

DESCRIPTION	LIGHT GREY	BLACK	DARK GREY
27u 600mm x 1000mm Server Cabinet	355.00	405.00	405.00
42u 600mm x 1000mm Server Cabinet	390.00	390.00	390.00
45u 600mm x 1000mm Server Cabinet	420.00	420.00	420.00
27u 800mm x 1000mm Server Cabinet	420.00	445.00	445.00
42u 800mm x 1000mm Server Cabinet	475.00	500.00	500.00
45u 800mm x 1000mm Server Cabinet	490.00	515.00	515.00

Prism's PI server cabinet range has been designed, in house, to complement our original PI data cabinet range. It meets the need of an evolving server cabinet market. In addition to complementing PI data cabinet installation, it answers the challenge of thermal management requirements, and matches the load capacity specified by major server manufacturers.

Mesh or Glass
Front Doors

FEATURES:

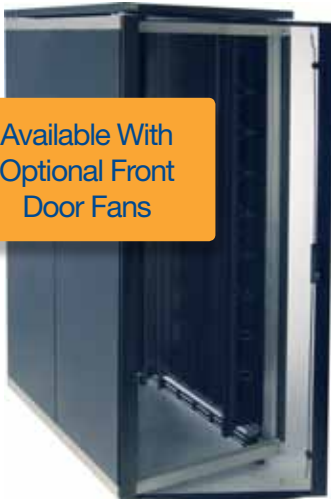
- Enclosed lockable glass or mesh front door with vented surround
- Lockable rear swing door with mesh insert
- Lockable side panels with vents top and bottom
- Heavy duty mounting profiles front, middle and rear
- Maximum working depth is 890mm

Internet Express Link **4105**

Prism FI Server Cabinets

Designed by Prism's in-house team of engineers, Prism's FI server cabinet range provides ease of commissioning, cable-routing and maintenance. The unique box-section folding technique on the front and rear doors ensure extra strength and rigidity.

A modern, attractive exterior ensures its suitability for any office environment. The cabinets are available in 27U, 42U or 45U. They can be 600mm or 800mm wide, and 1000mm deep.



Available With
Optional Front
Door Fans

1000mm Deep Prism FI Server Racks

DESCRIPTION	MESH FRONT	ENHANCED FRONT
27u 600mm x 1000mm FI Server Cabinet	665.00	695.00
42u 600mm x 1000mm FI Server Cabinet	800.00	835.00
45u 600mm x 1000mm FI Server Cabinet	835.00	870.00
27u 800mm x 1000mm FI Server Cabinet	700.00	730.00
42u 800mm x 1000mm FI Server Cabinet	865.00	905.00
45u 800mm x 1000mm FI Server Cabinet	900.00	935.00

FEATURES:

- Bolted aluminum frame construction
- Lockable rear swing door with mesh insert
- Lockable rear door with punched surround and centre
- Heavy duty mounting profiles front, middle and rear
- Lockable side panels
- Vented top cover
- Enhanced front door provides enhanced airflow
- Maximum working depth is 1000mm Cabinet = 890mm

Internet Express Link **4170**

Usystems Value Server Cabinets



DESCRIPTION	PRICE (£)
12u 600mm x 1000mm Value Server Cabinet	240.00
18u 600mm x 1000mm Value Server Cabinet	260.00

FEATURES:

- Houses all major server brands
- Open Structure design
- Superior cable management
- Front & rear mounting angles
- Lockable side access panels
- 250kg weight loading

Internet Express Link **4171**

The Concept

Designed to be more than just sound-proof enclosures the UCoustic™ family is a complete range of enclosures designed to be complete all round communications units, addressing both active and passive equipment in equal measure. Accommodating hardware such as all the main server brands e.g. IBM, HP, Dell, Sun, Viglen, etc., plus as importantly dealing with the infrastructure cabling and patch cabling. Combined with record breaking noise attenuation and thermal dissipation performance the UCoustic™ family are the class leaders

Log on to

www.comms-express.com/ucoustic
for Sound Comparisons



UCoustic™ Cabinets

➤ Capable of up to 28.5DBa noise attenuation,
Reducing noise levels to that of a whisper

➤ Independently tested by 'MIRA' Test
Laboratories (Sound Power Measurement
in accordance with ISO3744)

➤ Capable of removing up to 7kw of heat from
the cabinet, keeping critical equipment cool
and quiet - See website for an indication of
your servers thermal load and noise

➤ The UCoustic Cabinet is compatible with
all leading server brands including blade
servers

➤ Unique patent pending design

Thermal Loads
up to 1kw



Value 8210 Sound Proofed Cabinets

DESCRIPTION	PRICE (£)
12u 600mm x 1100mm Sound Proofed Server Cabinet	690.00
18u 600mm x 1100mm Sound Proofed Server Cabinet	740.00

FEATURES:

- Integrated 5 way power distribution unit
- 4 way low noise angled rear fan tray
- Sound proofing materials to BS4443, Flammability to BS4735.1974 and BS2792:1961 Class 3



Internet Express Link **4310**

UCoustic™ 9210 Passive Cabinets

DESCRIPTION	Load (Kw)	PRICE (£)
12u Passive UCoustic Server Cabinet	1.75	1333.33
24u Passive UCoustic Server Cabinet	2.25	2041.67
42u Passive UCoustic Server Cabinet	2.75	2535.00

Heat is dissipated through normal airflow
convection with no fan assistance

FEATURES:

- Passive Wardrobe Front & Rear Doors
- 780w x 1100d Frame
- 19" Mounting Angles fitted front and rear
- Front and rear infill's
- Cable entry via base of cabinet cable entry acoustic foam block
- Optional dust ingress protection
- All cladding is easily removable for easy access and installation



Internet Express Link **4390**

Thermal Loads
up to 2.75kw



UCoustic™ 8210 Midi Cabinet



DESCRIPTION	Load (Kw)	PRICE (£)
12u 8210 Midi UCoustic Sound Proof Cabinet	4.00	1367.00

**Active front doors complete with fans increase
the heat dissipation to 4kw**

FEATURES:

- Passive Front Doors
- Active Rear Panel c/w Fan speed controller and temperature sensor
- 780w x 700d Frame
- 19" Mounting Angles fitted front and rear
- Two cable entry options
- All cladding is easily removable for easy access and installation

[Internet Express Link](#) **4391**

Thermal Loads
up to 4kw

UCoustic™ 8250 Wall Cabinet



DESCRIPTION	Load (Kw)	PRICE (£)
12u 8250 UCoustic Sound Proof Wall Cabinet	4.00	1367.00

**Active front doors complete with fans increase
the heat dissipation to 4kw**

FEATURES:

- Quick fit hanging panel
- Passive Front Doors
- Active Rear Panel c/w Fan speed controller and temperature sensor
- 780w x 700d Frame
- Two cable entry options
- All cladding is easily removable for easy access and installation

[Internet Express Link](#) **4392**

Thermal Loads
up to 4kw

UCoustic™ 9210 Active Cabinets



DESCRIPTION	Load (Kw)	PRICE (£)
12u Active UCoustic Server Cabinet	7.2	1683.33
24u Active UCoustic Server Cabinet	7.2	2476.33
42u Active UCoustic Server Cabinet	7.2	3373.33

**Active cabinets come complete with fan assisted
rear doors increasing the efficiency of the heat
dissipation to 7.2kw**

FEATURES:

- Active Rear Doors c/w Fan speed controller and temperature sensor
- Passive Wardrobe Front Doors
- 19" Mounting Angles fitted front and rear
- Front and rear infill's
- Cable entry via base of cabinet cable entry acoustic foam block
- All cladding is easily removable for easy access and installation
- Load Bearing Castors

[Internet Express Link](#) **4393**

Thermal Loads
up to 7.2kw

Quiet Office Server Cabinets

These Portable Server Environments allow deployment of servers and data hardware directly into the office workspace, doing away with the need for expensive dedicated computer rooms.

Office Style Server Cabinets



DESCRIPTION	PRICE (£)
12u 1120mm Deep Cooled and Soundproofed Cabinet	1594.00
24u 1120mm Deep Cooled and Soundproofed Cabinet	2516.00
38u 1120mm Deep Cooled and Soundproofed Cabinet	3487.00

Available in Steamed Beech & Light Oak finishes

Office Style Cabinet Accessories

DESCRIPTION	PRICE (£)
1u Adjustable Shelf	45.99
Static Server Support Rail	38.50
1u Acoustic Blanking Plate	12.64
2u Acoustic Blanking Plate	15.74
4u Acoustic Blanking Plate	22.39

FEATURES:

- Tamper-proof locks
- 19" Mounting profiles front & rear
- Usable Rack Depth 720 - 800mm
- Plug & play installation
- Cable tray throughout
- Integrated IEC power distribution
- Wheel about mobility
- Lockable castors
- 3 year warranty on fan systems

[Internet Express Link](#) **4301**



Colocation Cabinets

Colocation cabinets are a cost effective way of maximising expensive fixed floor area, enabling smaller users a shared floor space without any loss of revenue from each footprint.

DESCRIPTION	PRICE (£)
48u 2 Section 1000mm Deep Colocation Server Cabinet	820.00
48u 4 Section 1000mm Deep Colocation Server Cabinet	980.00

- Available in 2 section of 4 section configurations
- 2 Section - 48u 1000mm deep with 2x 22u sections
- 4 Section - 48u 1000mm deep with 4x 11u sections
- Fitted with combination lock with key override
- 2/4 Way cable protected channel trunking for secure cable routing
- Optimised airflow
- Available from stock

In Stock for Next
Day Delivery -
No MOQ

[Internet Express Link](#) **8351**

NetShelter SX Server Racks

The APC NetShelter SX is the next generation rack enclosure solution influenced by 10 years of customer feedback and addresses current IT market trends for high-density server and networking applications.

With a strong focus on cooling, power distribution, cable management and environmental monitoring, the NetShelter SX provides a reliable rack-mounting environment for mission-critical equipment.



NetShelter SX Server Racks

DESCRIPTION	PART NO.	PRICE (£)
24U NetShelter SX 600mm x 1070mm Rack	AR3104	665.00
42U NetShelter SX 600mm x 1070mm Rack	AR3100	756.00
48U NetShelter SX 600mm x 1070mm Rack	AR3107	896.00
42U NetShelter SX 750mm x 1070mm Rack	AR3150	926.00
48U NetShelter SX 750mm x 1070mm Rack	AR3157	1116.00
42U NetShelter SX 600mm x 1200mm Rack	AR3300	991.98
48U NetShelter SX 600mm x 1200mm Rack	AR3307	1235.00
42U NetShelter SX 750mm x 1200mm Rack	AR3350	1263.93
48U NetShelter SX 750mm x 1200mm Rack	AR3357	1455.61

FEATURES:

- Integrated with APC InfraStruXure - APC cooling, power distribution, and cable management products work seamlessly with the enclosures to provide a complete IT infrastructure support system.
- Guaranteed compatibility - Vendor-neutral mounting for guaranteed compatibility with all EIA-310 compliant 19" equipment. The APC "Fits Like a Glove" money back guarantee provides peace of mind that all of your EIA-310-D compliant rack-mount equipment will physically fit

[Internet Express Link](#) **8354**



NetShelter VL Server Racks

The APC NetShelter VL is the enclosure you have become familiar with from APC but now with basic functionality and features provided as a cost-effective solution.

The NetShelter VL maintains a strong focus on cooling, power distribution, and cable management to provide a reliable rack-mounting environment for mission-critical equipment but with optional features such as side panels, casters, and rear cable channel that reduces the cost of the base enclosure.



NetShelter VL Enclosures

DESCRIPTION	PART NO.	PRICE (£)
42U 600mm x 1070mm NetShelter VL	AR2900	
42U 600mm x 1070mm NetShelter VL (No Sides)	AR2901	

FEATURES:

- Cable Access - Large cable access slots in the roof provides access for overhead cable egress. The bottom design allows for unobstructed cable access through a raised floor
- Ventilated - Perforated front and rear doors provide ample ventilation for servers and networking equipment

[Internet Express Link](#) **8356**

REDUCE YOUR CARBON FOOTPRINT WITH COLD AISLE CONTAINMENT

The Solution:

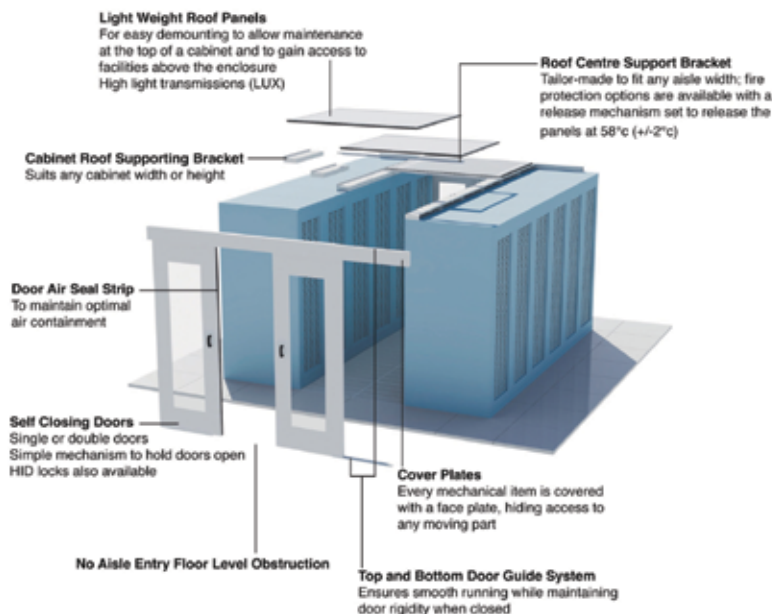
1. Cold Aisle Containment is a non-intrusive bespoke retrofit to data centres, whereby the cold aisle is contained to maximise cooling efficiency. This enables five main key capabilities:
2. Preventing recirculation of air back to the computer room air-conditioning (CRAC) unit(s) significantly improves the efficiency of your building's cooling system and reduces your company's carbon footprint.
3. By creating a positive pressure in the cold aisle, air is directed straight into the servers. This makes them run more efficiently, reducing the risk of failure and extending their life span.
4. In the event of a total cooling shut down, Cold Aisle Containment stops a heating outage for 35 minutes, providing an extra 20 minutes to react.

Being able to regulate the air enables better control of the room's temperature. By increasing the temperature of the CRAC unit by 1°C, provides a typical saving in the region of 4% of cooling power bills. In addition, the chiller units will make greater use of natural air temperature (free cooling), further enhancing energy savings.

5. 74% of server failures occur in the top third of the rack where the temperature is traditionally hotter. Cold Aisle Containment provides temperature equilibrium across all servers, no matter where they are positioned in the rack.

Eight Key Benefits:

1. Cost savings of between 10% and 30% of current building cooling systems.
2. Power savings on room hardware (servers, switches, routers, etc).
3. Control of room temperatures and humidity.
4. Control of airflow and balancing.
5. Improved U-space utilisation.
6. Resiliency to a cooling system shutdown.
7. Redundancies to the building and room cooling systems, improving data centre tier status.
8. Reduces the building's carbon emissions, improving eco friendly status.



Bespoke retrofit Aisle Containment Solutions

Nubis Aisle Containment Solutions is a flexible vendor independent airflow containment system that is easily configurable for multiple data centre cooling configurations and room characteristics. The Nubis system can be fitted retrospectively to any existing data centre configuration where racks and cabinets are either homogeneous (uniform height) or heterogeneous (multiple height) making Nubis the ideal solution for legacy data centres.

Extra features

- Drop Down Roofing Panel
- Fixed Roofing Panel

For UPS
See Pages
48-50



Fixed Vented Shelves

DESCRIPTION	PRICE (£)
450mm Fixed Vented Shelf	15.00
650mm Fixed Vented Shelf	19.00
750mm Fixed Vented Shelf	22.00

FEATURES:

- Fully vented for maximum airflow
- Compatible with our cabinets
- Comes complete with all fixings



Internet Express Link **4204**



Heavy Duty Fixed Vented Shelves

DESCRIPTION	PRICE (£)
450mm Heavy Duty Fixed Vented Shelf	37.00
650mm Heavy Duty Fixed Vented Shelf	48.00
750mm Heavy Duty Fixed Vented Shelf	52.00

FEATURES:

- Load rated up to 50kg
- Fully vented for maximum airflow
- Compatible with our cabinets
- Comes complete with all fixings



Internet Express Link **4214**



Modem Shelves

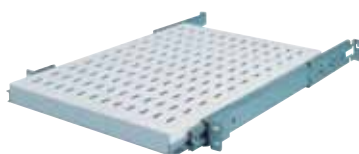
DESCRIPTION	PRICE (£)
185mm Deep Front Mounting Modem Shelf (1u)	13.65
400mm Deep Front Mounting Modem Shelf (2u)	17.60
400mm Deep Heavy Duty Front Mounting Modem Shelf (3u)	22.30

FEATURES:

- Choice of depths
- Maximum load of 20kg
- Compatible with all wall cabinets



Internet Express Link **4202**



Telescopic Shelves

DESCRIPTION	PRICE (£)
450mm Telescopic Shelf	59.00
650mm Telescopic Shelf	67.00
750mm Telescopic Shelf	71.00

FEATURES:

- Easy to use sliding shelves
- Fully vented for maximum airflow
- Compatible with our cabinets
- Comes complete with all fixings



Internet Express Link **4205**



Lockable Cabinet Drawers

DESCRIPTION	PRICE (£)
2u 19" Locable Cabinet Drawer	43.70
3u 19" Locable Cabinet Drawer	46.75
4u 19" Locable Cabinet Drawer	49.40

FEATURES:

- The rack drawer has a built in barrel lock with 2x keys to keep valuable equipment safe
- 366mm minimum rack depth required
- Capable of holding up to 20kilos



Internet Express Link **4259**



Chassis Runners

DESCRIPTION	PRICE (£)
400mm Chassis Runner (Pair)	9.00
600mm Chassis Runner (Pair)	11.00
700mm Chassis Runner (Pair)	13.00
800mm Chassis Runner (Pair)	13.00

FEATURES:

- For use when using 19" equipment, but you have no rackmount kit.



Internet Express Link **4255**



Cable Dump Panels

DESCRIPTION	PRICE (£)
1u Cable Dump Panel	8.90
2u Cable Dump Panel	12.90

FEATURES:

- Keep your cabinet cabling tidy and hidden with these cable dump panels



Internet Express Link **4266**



Complete Range
of KVM/Console
Drawers on 51-53

Value TFT Console Drawers

DESCRIPTION	PRICE (£)
15" Value TFT Console Drawer	349.99
15" Value TFT with Built-in 8 port KVM	609.99
15" Value TFT with Built-in 16 port KVM	699.99
17" Value TFT Console Drawer	399.99
17" Value TFT with Built-in 8 port KVM	659.00
17" Value TFT with Built-in 16 port KVM	819.00

FEATURES:

- Choice of screen size
- KVM options
- On Screen Display (OSD) on LCD Display
- 105 keys ps/2 keyboard with easy glide touchpad
- Keylock mechanism

Internet Express Link **4502**



Fan Units

DESCRIPTION	PRICE (£)
2 Way Roof Mounted Fan Unit	60.00
2 Way 19" Rack Mounted Fan Unit	60.00
4 Way Roof Mounted Fan Unit	70.00
4 Way 19" Rack Mounted Fan Unit	70.00

FEATURES:

- Quick and easy to fit
- Two or four fan units per tray
- Supplied with mains leads

Internet Express Link **4207**



Blank and Brush Strip Panels

DESCRIPTION	PRICE (£)
1u Blanking Panel	6.23
2u Blanking Panel	6.96
3u Blanking Panel	8.96
4u Blanking Panel	9.73
1u Brush Strip Panel	15.08
2u Brush Strip Panel	19.69

FEATURES:

- Blanking panels from 1u to 4u
- Brush strip panels allow for easy tidying of cables

Internet Express Link **4209**



Cable Management

DESCRIPTION	PRICE (£)
1u 5 Ring Cable Management Bar	5.50
2u 5 Ring Cable Management Bar	8.50
1u Recessed Cable Management Panel	8.95
Vertical Jumper Ring	4.00

FEATURES:

- Range of cable management accessories

Internet Express Link **4249**



Cable Trays

DESCRIPTION	PRICE (£)
12u 150mm Cable Tray	18.72
15u 150mm Cable Tray	18.72
18u 150mm Cable Tray	18.72
22u 150mm Cable Tray	18.72
27u 150mm Cable Tray	18.72
30u 150mm Cable Tray	22.10
42u 150mm Cable Tray	22.21
48u 150mm Cable Tray	22.21

FEATURES:

- Size range: from 12 to 48u
- Powder coated paint finish
- Other widths available on request

Internet Express Link **4210**



Other Accessories

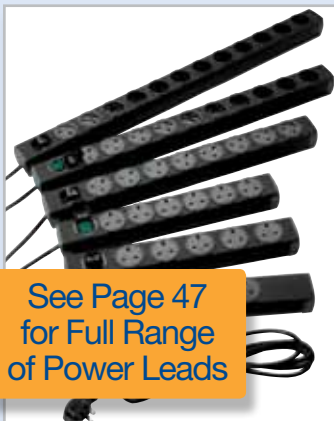
DESCRIPTION	PRICE (£)
Rotating Keyboard Shelf	106.25
Standard Duty Casters	25.00
Cabinet Jacking Feet	9.98
Earth Bonding Kit	17.30
Cabinet Baying Kit	13.10
Cage Nuts and Bolts (Pack of 50)	5.70

FEATURES:

- Universally compatible with our cabinets

Internet Express Link **4212**





See Page 47
for Full Range
of Power Leads

UK Sockets/UK Plug Cabinet PDU

DESCRIPTION	PRICE (£)
4 Way Horizontal PDU	23.00
6 Way Horizontal PDU	25.00
8 Way Vertical PDU	32.00
10 Way Vertical PDU	34.00
12 Way Vertical PDU	38.00
4 Way Horizontal PDU with Surge Protection	34.00
6 Way Horizontal PDU with Surge Protection	40.00
8 Way Vertical PDU with Surge Protection	42.00
10 Way Vertical PDU with Surge Protection	48.00
12 Way Vertical PDU with Surge Protection	54.00

FEATURES:

- Horizontal or vertical mounting up to 6 way
- External earth facility
- 3m input lead terminated with a BS1363 plug fused at 13A
- 2u of rack space is required for horizontal units
- Unit overall rating 13A, 250V



Internet Express Link **4220**



IEC C13 Sockets/UK Plug PDU

DESCRIPTION	PRICE (£)
4 Way Horizontal IEC C13 PDU	32.00
6 Way Horizontal IEC C13 PDU	35.00
8 Way Horizontal IEC C13 PDU	42.00
10 Way Horizontal IEC C13 PDU	48.00
12 Way Horizontal IEC C13 PDU	52.00
4 Way Horizontal IEC C13 PDU with Surge Protection	40.00
6 Way Horizontal IEC C13 PDU with Surge Protection	45.00
8 Way Horizontal IEC C13 PDU with Surge Protection	54.00
10 Way Horizontal IEC C13 PDU with Surge Protection	63.00
12 Way Horizontal IEC C13 PDU with Surge Protection	68.00

FEATURES:

- Horizontal mounting
- IEC 320 C13 sockets
- External earth facility
- 3m input lead terminated with a BS1363 plug fused at 13A
- 2u of rack space is required for horizontal units
- Unit overall rating 13A, 250V



Internet Express Link **4221**



IEC C14 Plug PDU

DESCRIPTION	PRICE (£)
6 Way UK Plug Sockets with IEC C14 Plug PDU	42.00
12 Way UK Plug Sockets with IEC C14 Plug PDU	58.00
6 Way IEC C13 Sockets with IEC C14 Plug PDU	36.00
12 Way IEC C13 Sockets with IEC C14 Plug PDU	39.00
6 Way UK Plug Sockets with IEC C14 Plug PDU with Surge	45.00
12 Way UK Plug Sockets with IEC C14 Plug PDU with Surge	68.00
6 Way IEC C13 Sockets with IEC C14 Plug PDU with Surge	45.00
12 Way IEC C13 Sockets with IEC C14 Plug PDU with Surge	50.00

FEATURES:

- External earth facility
- 3m input lead terminated with a IEC C14 Plug
- 2u of rack space is required for horizontal units
- Unit overall rating 13A, 250V



Internet Express Link **4222**



16 Amp Commando PDU

DESCRIPTION	PRICE (£)
6 Way UK Plug Sockets with 16 Amp Commando	35.00
12 Way UK Plug Sockets with 16 Amp Commando	52.00
6 Way IEC C13 Sockets with 16 Amp Commando	43.00
12 Way IEC C13 Sockets with 16 Amp Commando	48.00
6 Way UK Plug Sockets with 16 Amp Commando with Surge	54.00
12 Way UK Plug Sockets with 16 Amp Commando with Surge	69.00
6 Way IEC C13 Sockets with 16 Amp Commando with Surge	56.00
12 Way IEC C13 Sockets with 16 Amp Commando with Surge	61.00

FEATURES:

- External earth facility
- 3m input lead terminated with a 16Amp Commando Plug
- 2u of rack space is required for horizontal units
- Unit overall rating 16A, 250V



Internet Express Link **4223**



Ammetre PDU with UK Plug

DESCRIPTION	PRICE (£)
6 Way UK Plug Sockets	115.00
12 Way UK Plug Sockets	139.00
6 Way UK Plug Sockets with Surge Protection	120.00
12 Way UK Plug Sockets with Surge Protection	145.00

FEATURES:

- Digital ammeter to monitor PDU load
- 3m input lead terminated with a 16Amp Commando Plug
- 2u of rack space is required for horizontal units
- Unit overall rating 13A, 250V



Internet Express Link **4224**

APC Power Distribution

APC provides a wide array of power distribution solutions for your IT environment. APC's standardized PDUs are designed to increase the manageability and efficiency of your data center.

Power Distribution solutions provide real-time remote load monitoring of connected equipment and individual outlet power control for remote power recycling, manage power-up or power-down sequencing of equipment.

Full Range
of APC UPS
Pages 48-50

APC Basic PDU's

APC Basic Rack PDUs provide reliable power distribution via a single input with multiple output receptacles and distributes power from low amperage single phase circuits to higher-power 3-phase solutions.

DESCRIPTION

PART NO. PRICE (£)

16Amp C20 Input Basic PDU's

APC Basic PDU - 20xC13 & 4xC19 Sockets AP7552 152.44

APC Basic PDU - 12xC13 Sockets 1u AP9565 92.72

APC Basic PDU - 10xC13 & 2xC19 Sockets 1u AP9559 133.24

APC Basic PDU - 16xC13 Sockets AP9572 142.42

16Amp Commando Input Basic PDU's

APC Basic PDU - 20xC13 & 4xC19 Sockets AP7551 152.44

32Amp Commando Input Basic PDU's

APC Basic PDU - 20xC13 & 4xC19 Sockets AP7553 152.44

FEATURES:

- Rack-Mountable
- Single input power source
- Wide range of input and output connections
- Low Cost Power Distribution

 Internet Express Link **4225**



APC Metered PDU's

APC Metered Rack Power Distribution Units (PDUs) provide advanced warning to protect against unplanned power overloads. User-defined alarm thresholds mitigate risk with real-time local and remote alerts of potential unexpected circuit overloads to your mission critical equipment.

Metered rack PDUs provides power utilization trends allowing Data Center Managers to make informed decisions on right sizing IT environments to lower total cost of ownership

DESCRIPTION

PART NO. PRICE (£)

10Amp C14 Input Metered PDU's

APC Metered PDU - 8xC13 Sockets AP7820 214.54

APC Metered PDU - 16xC13 Sockets AP7850 249.54

16Amp C20 Input Metered PDU's

APC Metered PDU - 8xC13 Sockets AP7821 234.87

APC Metered PDU - 20xC13 & 4xC19 AP7852 277.78

16Amp Commando Input Metered PDU's

APC Metered PDU - 20xC13 & 4xC19 AP7851 277.78

32Amp Commando Input Metered PDU's

APC Metered PDU - 12xC13 & 4xC19 AP7822 383.92

APC Metered PDU - 20xC13 & 4xC19 AP7853 303.74

FEATURES:

- Rack-Mountable
- Remote Management Capabilities
- Local Current Monitoring Display
- Integrates with InfraStruXure Central
- Flash Upgradeable
- Wide range of input and output connections
- Load indicator LED

 Internet Express Link **4226**



APC Switched PDU's

APC Switched Rack Power Distribution Units (PDUs) place rack equipment power control in the hands of the IT Manager. Remote outlet level controls allow power on/off functionality for power recycling to reboot locked-up equipment and to avoid unauthorized use of individual outlets.

Power sequencing delays allow users to define the order in which to power up or down attached equipment. Avoid circuit overload during power recovery and extend uptime of critical equipment by prioritizing the load shedding. Current metering provides real-time remote monitoring of connected loads.

DESCRIPTION

PART NO. PRICE (£)

10Amp C14 Input Metered PDU's

APC Switched PDU - 8xC13 Sockets AP7920 301.49

16Amp C20 Input Metered PDU's

APC Switched PDU - 8xC13 Sockets AP7921 339.88

APC Switched PDU - 16xC13 Sockets AP7950 518.29

APC Switched PDU - 21xC13 & 3xC19 Sockets AP7952 510.29

16Amp Commando Input Metered PDU's

APC Switched PDU - 21xC13 & 3xC19 Sockets AP7951 434.73

32Amp Commando Input Metered PDU's

APC Switched PDU - 16xC13 Sockets AP7922 481.03

APC Switched PDU - 21xC13 & 3xC19 Sockets AP7953 470.87

FEATURES:

- Rack-Mountable
- Network Management
- Remote Individual Outlet Control
- Integrates with InfraStruXure Central
- Flash Upgradeable
- Wide range of input and output connections
- Load indicator LED

 Internet Express Link **4227**



Nubis Cold Aisle Containment



DESCRIPTION	PRICE (£)
1200mm Clearpath Double Sliding Door	POA
1800mm Clearpath Double Sliding Door	POA
1000mm Clearpath Single Sliding Door	POA
700mm Clearpath Single Sliding Door	POA
Roof Panels - Available for Gas and Water Fire Suppression Systems:	
1200mm x 600mm Roof Panel	POA
1200mm x 800mm Roof Panel	POA
1200mm x 1200mm Roof Panel	POA
1200mm Roof Support Bar	POA
1800mm Roof Support Bar	POA

FEATURES:

- Cost savings of between 10% and 30% of current building cooling systems.
- Power savings on room hardware (servers, switches, routers, etc)
- Control of room temperatures and humidity
- Control of airflow and balancing
- Improved U-space utilisation
- Resiliency to a cooling system shutdown



Internet Express Link **8364**

AirGuard Floor Grommets



DESCRIPTION	PRICE (£)
AirGuard Brush Seal Grommet 265mm x 135mm	35.00
AirGuard Brush Seal Grommet 230mm x 165mm	39.00
AirGuard Retro fit Brush Seal Grommet	36.00
AirGuard Retro Fit Kit - max 320mm x 250mm	41.50
AirGuard Retro Fit Kit - max 620mm x 250mm	49.80
AirGuard 600mm Brush 75mm Bristle	22.50
AirGuard 600mm Brush 125mm Bristle	30.00
AirGuard Reducer Plate for GTAG3 300mm to 200mm	21.10
210mm (Panel Cut Out Diameter) Round Grommet Grey	12.15
210mm (Panel Cut Out Diameter) Round Grommet Black	12.15
127mm (Panel Cut Out Diameter) Round Grommet Grey	4.25
127mm (Panel Cut Out Diameter) Round Grommet Black	4.25
127mm Round Grommet Grey c/w Neoprene Gasket	4.95
127mm Round Grommet Black c/w Neoprene Gasket	4.95
Air-Block Round Split Neoprene Grommet 150mm Grey	12.90
Air-Block Round Split Neoprene Gasketed 150mm Black	12.90
90mm (Panel Cut Out Diameter) Round Gasketed Grommet	12.30
AirGuard Brush Seal Grommet 133mm x 114mm	35.25
AirBlock "Click" Grommet 225mm x 138mm	19.95
AirGuard 150mm Brush Strip, 125mm Bristle	29.60
AirGuard 300mm Brush Strip, 125mm Bristle	31.00
AirGuard 350mm Brush Strip, 125mm Bristle	26.85

FEATURES:

- Reduced air loss and increased under-floor static pressure
- Improved cooling efficiencies and extended cooling equipment life
- Dramatically reduced plant running costs. Over 50% of conditioned air does not get to the air intake of data room equipment due to unsealed openings
- Facilitates Cold Aisle/Hot Aisle best practices



Internet Express Link **8358**

The Air-Guard cable seal provides an easy, economical and effective solution to optimising thermal management of Data Room plenum cooled raised floor systems.

Quick Fit Blanking Panels



DESCRIPTION	PRICE (£)
1x 27U PlenaFill Blanking Panels - 1U Tear Off	75.00
10 x 27U PlenaFill Blanking Panels - 1U Tear Off	548.00
1u 19" Modular Toolless Blanking Panel - Single	3.49
APC 1U 19" Modular Toolless Blanking Panel - Pack 10	29.50
1u 19" Modular Toolless Blanking Panel - Pack 200	289.99
Hotlok 1U Black Toolless Blanking Panels Square Hole Pk10	32.00
Hotlok 2U Black Toolless Blanking Panels Square Hole Pk5	24.00
Self Adhesive Temp Strip (°C & °F) +/- 1°C Accurate Pack 10	27.50
1x 12U Strip Plastic Toolless Blanking Panels, Self Fixing	9.99
10x 12U Strip Plastic Toolless Blanking Panels, Self Fixing	89.99
Uspace QuickFit Toolless Blanking Panel 1u	6.00
Uspace QuickFit Toolless Blanking Panel 2u	7.00
Uspace QuickFit Toolless Blanking Panel 3u	9.00
Uspace QuickFit Toolless Blanking Panel 4u	12.00
Uspace QuickFit Toolless Blanking Panel 5u	14.00

FEATURES:

- Quick fit blanking panels save installation time and covers open rack space to ensure proper airflow



Internet Express Link **8360**



KoldLok

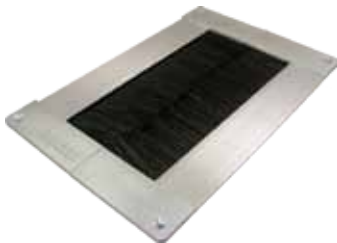
DESCRIPTION	PRICE (£)
Integral Floor Seal 235mm x 172mm	59.95
Split Integral Floor Seal 235mm x 172mm - New Cutout	61.75
Surface Floor Seal 254mm x 184mm - Existing Cutouts	72.00
Surface L Floor Seal 254mm x 248mm - Existing Cutout	84.00
Surface XL Floor Seal 254mm x 330mm - Existing Cutout	85.75
Mini Floor Seal 100mmx150mm - Without Static Dissipative	37.35
Mini Floor Seal 100mm x 150mm - c/w Static Dissipative	39.20
Safety Plate for Integral & Split Integral	14.00

By installing KoldLok Raised Floor Grommets, you can optimize the effectiveness of your existing cooling equipment and manage the increasing heat loads. The patented KoldLok sealing system specifically addresses bypass airflow and its detrimental effects on data center cooling.

FEATURES:

- Increases existing cooling unit capacity
- Reduces the need to purchase additional cooling units
- Improves equipment reliability and extends equipment life
- Increases static pressure under the raised floor and improves cool air delivery through perforated tiles or floor grates
- Facilitates Cold Aisle/Hot Aisle best practices

Internet Express Link **8357**



CoolControl Floor Entry Seals

DESCRIPTION	PRICE (£)
CoolControl - Half Integrated 9cm x 60cm	90.00
CoolControl - Integrated 18cm x 28cm	57.50
CoolControl - 27cm x 28cm	74.60
CoolControl - Half Integrated 13.5cm x 60cm	81.45
CoolControl - Surface 18cm x 28cm	68.60
CoolControl - Surface 27cm x 28cm	90.00
CoolControl - Half Surface Extended 9cm x 60cm	90.00
CoolControl - Half Surface Extended 13.5cm x 60cm	98.60
CoolControl Safety Plate - Integrated 18cm x 28cm	12.00
CoolControl Safety Plate - Integrated 27cm x 28cm	15.50
CoolControl Safety Plate - Half Integrated 9cm x 60cm	17.15
CoolControl Safety Plate - Half Integrated 13.5cm x 60cm	19.75

FEATURES:

- Up to 63% higher data centre energy efficiency
- Can be etched with your logo

Internet Express Link **8359**



PlenaForm

DESCRIPTION	PRICE (£)
PlenaForm Baffle 12 x Baffles, 88 Cable Ties & 44 M6 Rivets	999.95
PlenaFill/Form Tool-Free M6 Round Hole Rivets - Pk50	7.07

PLENAFORM® is a flexible, snap together, air flow baffle system which helps to solve dynamic thermal imbalances in data centers.

PLENAFORM® baffles are scored both vertically and horizontally so sections can be removed or added onto to meet any height or width requirement. All angles of bend radius may be attained, including inside and outside mounting to raised floor pedestals.

Continuous punch out hole pattern allows attachment to any style raised floor pedestal at any height or width location with cable ties.

PLENAFORM® baffles are die cut from a flame retardant polypropylene compound that is inert, non-conductive, and non-hygroscopic with a UL-VO 94 rating.

FEATURES:

- Control and Balance Data Center Airflow
- Separate Hot Aisles from Cold Aisles
- No Installation Tools Required
- On-Site Configurable (Width and Height)
- Fits ANY Raised Floor Pedestal
- Reduces Energy Consumption and Operating Costs
- An Inert, Non-Conductive and Non-Hygroscopic Material
- Flammability rating of UL V-0 per UL94
- An Energy Saving and Thermal Tuning Tool

Internet Express Link **8366**



Floor Tiles

DESCRIPTION	PRICE (£)
CoolControl MaxAirflow Floor - 600mm x 600mm 680kg	237.80
Uspace 600mmx600mmx39mm 3 Brushed RaisedFloor Tile	125.00

FEATURES:

- Advanced raised floor tiles to manage cabinet airflow

Internet Express Link **8361**



Accessories

DESCRIPTION	PRICE (£)
Aluminum Twin Suction/Action Panel Lifter	40.00
Yellow Plastic Quick Release Twin Cup Lifter	36.50
Aluminum Triple Suction/Action Panel Lifter	78.30
Panel Lifter Wall Bracket	9.50
Carpet Grip Panel/Floor Tile Lifter	98.60
U Tape Measure 3mt, 1U-67U	2.75

FEATURES:

- A range of floor panel lifters and accessories

Internet Express Link **8362**

Advanced Integrated Monitoring System

The EPI AIMS (Advanced Integrated Monitoring System) is a family of products offering a comprehensive environmental monitoring solution for computer rooms and data centres of all sizes.

With a wide range of sensors, a resilient architecture and a broad selection of alerting options, AIMS ensures that you will be kept informed of any situations that arise within your data centre - wherever you may be.

Visit

www.comms-express.com/aims
for a live demonstration



Receive Alerts
By GSM Text or
Voice

DESCRIPTION	PART NO.	PRICE (£)
AIMS 1U Environmental Monitor	EMAIMS-16	1779.99
Environment Sensing Modules:		
Temperature Sensor	EMESM-TMP	57.99
Humidity Sensor	EMESM-HMD	79.99
Combined Temperature & Humidity	EMESM-CTH	97.99
Wide Range Temperature & Humidity	EMESM-WTH	164.99
5m Water Leak Detection with 15m header	EMESM-W05	229.99
10m Water Leak Detection with 15m header	EMESM-W10	394.99
15m Water Leak Detection with 15m header	EMESM-W15	569.99
PIR Detector	EMESM-PIR	71.99
Ceiling PIR Detector	EMESM-CPR	57.99
AIMS Contact Sensor	EMESM-CNT	9.99
I/O Modules:		
AIMS GSM Dialer	EMIOM-GSM	399.99

FEATURES:

- Live view of a facility from anywhere, anytime
- Monitor and manage server room environmental and security conditions over IP
- Up to eight users can access the unit concurrently over the web interface
- 1U rack mounted chassis
- Dual redundant power supplies with dual input and integrated battery backup
- Support for up to 24 sensors, 16 analogue/digital and 8 digital
- Web browser configuration interface
- Built in internal temperature, humidity, battery and incoming power sensors

Internet Express Link **4228**

Computer room and data centre environmental threats can cause more damage than hardware or software problems. Redundant hardware such as parallel UPS, generators and other fault-tolerant systems can be rendered useless if your data centre overheats or floods. Don't ignore environmental threats - remotely manage them with the Advanced Integrated Monitoring System.

The AIMS monitors critical environmental conditions such as temperature, humidity, liquid presence, motion and intrusion. When a sensor goes out of range of a configurable threshold, the system can notify you via email, LEDs, alarm beacon, web page, network management (SNMP), voice dialer and SMS messages.

CL-Amp Power Monitoring



DESCRIPTION	PRICE (£)
CL-Amp Kit - Includes 1x PowerHawk, 2x CL-amp, Temp Sensor & Env-U	459.99
CL-Amp - Single Unit	130.55
PowerHawk 2 Power & Environmental Monitor via IP	219.50
Hawk-I Power and Environmental Monitor	415.00
Eagle-I Power & Environment Monitor	610.00

FEATURES:

- Non-invasively monitors standard 3 core single phase AC power cables
- Current measuring range 1.0 Amp to 60 Amps
- Full range of accessories available

Internet Express Link **4240**

Remote Power Control



DESCRIPTION	PRICE (£)
DataProbe iBoot Single Port Web Enabled Power Switch	245.00
iBootBar Single - 8x IEC320 Outputs	455.00
iBootBar Dual - 8x IEC320 Outputs	470.00

FEATURES:

- Access from any Network point - No field trips required for Reboot
- Web Control - No special software required
- Dual Password Protected - Separate user and administrator passwords

Internet Express Link **4241**

iBoot is a 10/100 Ethernet network attached, IP addressed, Web Controlled AC power switch. Anyone with a web browser can access iBoot to perform power On, Off or Reboot (timed power shutdown). iBoot is password protected for security.

PowerMate Monitoring PDU



DESCRIPTION	PRICE (£)
PowerMate PDU with Environmental Monitoring	420.00
PowerMate2 PDU with Env & Power Monitoring	495.00
PowerMate3 PDU with Env & Power Monitor + Control	542.00

FEATURES:

- Built-in Sensors to monitor the environment in the cabinet
- Built-in IEC C13 PDU
- 5 External ports for additional sensors

Internet Express Link **4230**

Overview

The Climate CM-2 Environmental Monitoring Unit will monitor and report Environmental and Security conditions in your cabinet or comms room.

The 1u design allows for simple and tidy installation in your existing 19" rack.

The CM-2 continuously monitors climate, environmental and security conditions as configured and will display events and alerts on its built-in web management interface. Details are also shown on the units in-built LCD display.

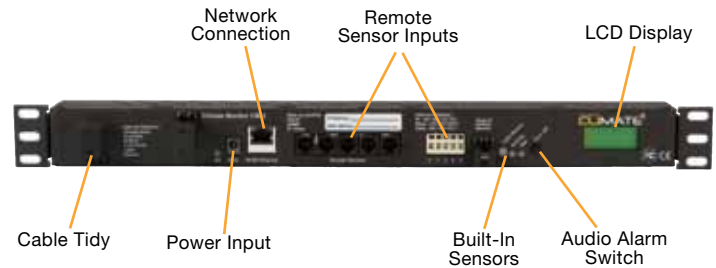
When configured thresholds are exceeded or security events triggered, alarms can be sent via E-mail, Audio Alarm or by an SNMP trap. Notifications can also be sent via SMS using the SMS Alert Server.

The CM-2 Environmental Monitor works straight out of the box, with no additional software or hardware to purchase. Installation is simple, use DHCP to assign an IP address manually, or assign a static one yourself. Setup is easy via the intuitive web management interface.

Built-In Functionality

- Temperature
- Humidity
- Air Flow
- Light
- Sound

Features



Expandability

Up to 16 external sensors can also be added to provide monitoring of external conditions, sensors available are:

- Temperature Sensor
- Temperature and Airflow Sensor
- Temperature, Humidity & Airflow Sensor
- Point Water Sensor
- Smoke Sensor
- Point Water Sensor

DESCRIPTION	PRICE (£)
CliMate CM-2 Rack Environmental Monitoring Unit	428.00
MaxiMate CM-16 Rack Environmental Monitoring Unit	389.00
PowerMate Rack Environmental Monitoring Unit	497.00

[Internet Express Link](#) **8370**

APC NetBotz Environmental Monitoring

APC's environmental monitoring solutions provide early warning of conditions that lead to equipment failure, allowing you to react to changes and minimize the impact on network availability. The Environmental Manager lowers total cost of ownership through modular components that accommodate changing business requirements. The Environmental Manager is a scalable network appliance that monitors environmental conditions in small, medium and large data centers. Add low profile sensors and Expansion Modules for a customized solution to protect your most critical locations from environmental and physical threats



DESCRIPTION	PART NO.	PRICE (£)
NetBotz Rack Monitor 200	NBRK0201	261.99
NetBotz Room Monitor 355 (No PoE Injector)	NBWL0355	879.99
NetBotz Room Monitor 355 (with PoE Injector)	NBWL0356	729.99
NetBotz Rack Monitor 450	NBRK0451	889.99
NetBotz Rack Monitor 550	NBRK0551	1189.99

FEATURES:

- Prevent equipment failure from a full range of threatening environmental conditions
- Real-time event notification minimises response times to critical physical infrastructure situations. Enables IT Administrators to reduce mean time to repair, improve efficiency, and maximise uptime.

[Internet Express Link](#) **8372**



Punch Down Tool

DESCRIPTION

Krone Style IDC Punch Down Tool

PRICE (£)

9.95

FEATURES:

- Wire insertion termination tool for Krone style IDC punchdown blocks
- Automatic wire trimming facility
- Plastic body
- Hardened steel jaws



[Internet Express Link](#) **3003**



Crimp and Stripping Tools

DESCRIPTION

Cat5e RJ45 & RJ11 Crimp Tool

BT 431A/631A Crimp Tool

Cyclops UTP Cable Stripper

Universal Cable Stripper

PRICE (£)

43.00

36.00

8.50

9.50

FEATURES:

- Ratchet facility for the Cat5e and Cat6 tools
- Cat5e tools also crimps RJ11 connectors



[Internet Express Link](#) **3001**



Continuity Testers

DESCRIPTION

RJ45, RJ11, USB and BNC Continuity Tester

Value RJ45 Continuity Tester

PRICE (£)

59.00

20.00

FEATURES:

- Tests cables for continuity
- RJ11, USB and BNC tester available



[Internet Express Link](#) **3002**



Structured Cabling Installers Kit

DESCRIPTION

Structured Cabling Installers Kit Includes:

Continuity Tester, IDC Punchdown Tool, RJ45 Crimp Tool & 50 RJ45 Cat5e Plugs

PRICE (£)

34.99

FEATURES:

- An ideal kit for all Datacomms Engineers



[Internet Express Link](#) **3368**



Installation Kits

DESCRIPTION

Termination Kit, Includes The Following:

1x Cat5e Crimp Tool, 1x Patch Cable (305m), 50x Cat5e Plugs, 50x Boots 1x Cyclops Stripper 1x Continuity Tester.

Structured Cabling Kit, Includes the Following:

1x Cyclops Stripper, 1x IDC Punchdown Tool, 1x Solid Cable (305m), 1x Continuity Tester

Contractor Pack, Includes the Following

1x 24 way Patch Panel, 1x 1u Cable Tidy Bar, 12x Dual Module in Single Gang Faceplate

PRICE (£)

138.00

76.00

65.00

FEATURES:

- Kits provide all you need to get started
- Available separately, but buying together saves time and money



[Internet Express Link](#) **3007**



Voice & Data Maintenance Tool Kit

DESCRIPTION

Voice & Data Maintenance Tool Kit

This tool kit is a complete installation and repair kit for twisted pair applications. The tool kit provides the necessary test equipment for basic troubleshooting of voice and data networks.

PRICE (£)

165.00

FEATURES:

- Cable tester, Modular crimp tool, Punchdown tool, Cable stripping tool, 5" cutters, 5" Side cutters, 6" pliers, 2x slotted screwdrivers, 2x Phillips screwdrivers, pocket flashlight, utility knife, 7-piece Allen key set, 6" adjustable spanner



[Internet Express Link](#) **3013**

LinkRunner™ Pro Network Multimeter

DESCRIPTION

LinkRunner™ Pro Network Multimeter	PRICE (£)
LinkRunner™ Pro Network Multimeter Kit	672.50
	1011.50

Empower frontline technicians with more problem solving capabilities

Following in the tradition of the original LinkRunner, LinkRunner Pro was designed to provide desktop support and network technicians with a simple, dedicated tool for resolving the most common PC user and device connectivity issues.

Because of rapid network evolution, today's connectivity problems are much more complex than they used to be. Higher bandwidth requirements have expedited Gigabit proliferation. Greater security threats have necessitated tighter control measures like 802.1X. And technologies like VoIP and WLAN have given rise to a greater reliance on PoE for power. LinkRunner Pro recognizes these changes, and empowers technicians to address today's new challenges.

Expedite trouble ticket resolution with professional link status reports

When no test documentation is available, closing trouble tickets can be a frustrating and time-consuming process. Finger pointing among different groups and redundant testing are just a couple of the wastes that occur. With today's focus on operational efficiency, IT departments don't have time for wastes like these. LinkRunner Pro can eliminate finger pointing and reduce redundant testing by generating objective, professional link status reports that can be printed or routed electronically.

FEATURES:

- **Link at 10/100/Gig** – identify device capabilities and confirm actual connected speed/duplex status
- **Ping key devices** – measure response statistics of DHCP, default router, DNS server, and other key devices or URLs
- **Verify 802.1X settings** – authenticate on 802.1X secured networks; enter EAP type, user name, certificates, and password
- **Detect PoE service** – verify availability, voltage level, and pairs of Power over Ethernet per IEEE 802.3af specifications
- **Identify port (C/E/LLDP)** – identify nearest switch address, slot, and port with Cisco, Extreme, and IEEE Link Layer Discovery Protocols
- **Test cable wiremap** – test wiremap and length; detect miswires, shorts, split pairs or opens; measure distance to faults with TDR
- **Locate and ID cable** – use IntelliTone digital toning, hub blink feature, or optional cable IDs to locate cables at patch panels or wall jacks

 Internet Express Link **3505**

MicroScanner² Cable Verifier

DESCRIPTION

MicroScanner ²	PRICE (£)
MicroScanner ² Profesional Kit	306.00
MicroScanner ² Termination Test Kit	506.00
	506.00

Streamline verification testing

The MicroScanner² Cable Verifier presents a revolutionary change in voice, data, and video cable testing. It starts by taking results from what was four different test modes and displaying them all at once – graphical wiremap, pair lengths, distance to fault, cable ID, and far end device. What's more, its integrated RJ11, RJ45, and coax test ports support virtually any type of low-voltage cable testing with no need for awkward adapters. The end result is reduced test time and technician error. That makes high-quality installations more efficient than ever.

Rule out service problems fast

Today's communications technicians have a lot more problems to deal with than just the cabling. They have to rule out a whole host of potential cable and service issues before determining the cause of a connection problem. Is there telephone voltage? What's the polarity? Is there an Ethernet switch at the far end? Is PoE available? MicroScanner² acknowledges this, giving technicians high power vision to verify today's most common voice, data, and video services. That means faster, more comprehensive troubleshooting.

FEATURES:

- **Revolutionary Interface** – Graphical wiremap, length, cable ID, and distance to fault displayed on one screen
- **Multimedia Support** – Tests all common media types including RJ11, RJ45, Coax, with no need for adapters
- **IntelliTone Toning** – Locates virtually any cable or wire pair with IntelliTone digital and analog toning
- **VDV Service Detection** – Verifies today's media services, including 10/100/1000 Ethernet, POTS, and PoE
- **Rugged Housing** – Integrated rubber holster enhances grip and makes it durable enough for the toughest jobs
- **Oversized Display** – Large, backlit LCD makes results crystal clear whether in bright sunshine or in a dark closet

 Internet Express Link **3506**

VisiFault™ Visual Fault Locator

Locates Fibres, Finds Faults,
Verifies Continuity and Polarity

£212.00

 Internet Express Link **3507**

IntelliTone™ Pro Toner and Probe

Digital Toner and Probe Traces and
Locates Cables on Active Network

£140.00

 Internet Express Link **3508**

FLUKE
networks

Today's networks are in a constant state of evolution. Infrastructure expansion plus deployment of new technologies provides ongoing challenges for network technicians. With the right tool, you can get issues solved faster and with less frustration. Fluke Networks' family of portable network testers and analyzers were designed to do just that. Moves, adds and changes as well as complex troubleshooting tasks are accelerated with the use of these testers and analyzers. Take these tools anywhere, anytime, to isolate any problem... fast.

NetTool™ Series II Inline Network Tester

DESCRIPTION

NetTool Pro Series II

PRICE (£)

1766.00

Includes: IntelliTone Toning, NetTool Connect PC Software and WireView Wiremapper

NetTool VoIP Series II

2474.00

Includes: NetTool Pro with VoIP Option

NetTool Service Kit Series II

2474.00

Includes: NetTool VoIP with Monitoring and Authentication Option and IntelliTone Pro200 Probe

Troubleshooting network connectivity problems can be a daunting and time-consuming task. Without the right tool, network techs can spend hours of unnecessary time with trial and error guesswork trying to isolate the problem.

Fluke Networks has put an end to the guessing game with the NetTool Series II Inline Network Tester. NetTool combines powerful NetProve diagnostics, inline Gigabit vision, VoIP Phone PC configuration testing in one palm-sized tool, so you'll have everything you need to quickly resolve even the toughest connectivity problem. Plus, with the monitoring and authentication option, you'll have the power to identify port-based security threats and maintain user connectivity in 802.1x environments

FEATURES:

- **NetProve™ diagnostics** – isolate device and application connectivity issues in seconds
- **Inline Gigabit vision** - quickly troubleshoot network problems with powerful inline vision into 10/100/Gig traffic between switches, PCs, IP phones and other devices
- **PoE Measurements** - verify readiness of PoE systems and troubleshoot PoE device problems
- **Spot available network resources** – See MAC and IP addresses, subnet and services offered by active servers, routers and printers
- **IntelliTone digital signaling** - quickly and safely locate cables on active network
- **Monitoring and authentication** - identify spyware, malware, and viruses with port monitoring; troubleshoot authentication issues with 802.1x log (Option)
- **VoIP troubleshooting** - connect inline for visibility into VoIP calls to quickly diagnose IP phone boot-up and call control problems and to measure key call quality metrics (Option)

[Internet Express Link](#) **3501**

CableIQ™ Qualification Tester

DESCRIPTION

CableIQ

PRICE (£)

775.00

CableIT Kit

1170.00

Includes: IntelliTone200 Digital Probe & Remote IDs #2-7

The network tech's vision into cabling bandwidth

CableIQ is the first cabling bandwidth tester for network technicians. It gives even the most novice tech the vision to see what speeds existing cabling can support, quickly isolate cabling from network problems, and discover what is at the far end of any cable. That means network techs can close trouble tickets faster, reduce on-call time, and save money by better utilizing their existing infrastructure.

Reduce escalated problems by as much as 30%

CableIQ's powerful troubleshooting capability and intuitive interface enable your frontline technicians to identify and troubleshoot a wider range of problems within your infrastructure. Is the port active? Are the duplex settings matched? Is it a network problem or a cable problem? Can the cable support the required network bandwidth? CableIQ is the only tool that can answer all these questions before trouble tickets are escalated to the next level reducing problem escalation by up to 30%.

FEATURES:

- **Qualifies** - Sees if your existing cabling has the bandwidth to support voice, 10/100, VoIP or Gigabit Ethernet
- **Troubleshoots** - shows why existing cabling cannot support the network's bandwidth requirement (e.g. crosstalk at 11 meters)
- **Discovers** - detects what's at the end of any cable and displays device configuration (speed/duplex/pairing)
- **Identifies** - unused switch ports that can be reallocated
- **Graphically maps** wiring configuration and shows distance to faults with Intelligent Wiremap
- **Tests** all copper cabling media: twisted-pair, coax, and audio cabling

[Internet Express Link](#) **3502**

FiberInspector™ Mini + Cleaning Kit

Convenient Video Microscope Enables End-Face Inspection Inside Ports and on Patch Cords

£1126.50

[Internet Express Link](#) **3503**

MicroMapper™ Pro

Simple Voice/Data/Video Cable Tester with a "Quick Check" Test for Twisted Pair and Coax Connectors

£175.00

[Internet Express Link](#) **3504**

On-Site Demos
Available, Call
Sales for Details

AirCheck™ Wi-Fi Tester

Wi-Fi is a complex technology, but testing it doesn't have to be. The AirCheck Wi-Fi tester allows network professionals to quickly verify and troubleshoot 802.11 a/b/g/n networks.

Designed specifically for dispatched troubleshooting, AirCheck simplifies wireless testing by providing:

- Just a few clicks to the answers you need with streamlined, guided troubleshooting
- An instant view to required test results including network availability, connectivity, utilization, security settings, rogue hunting, and interference detection
- A rugged, purpose-built Wi-Fi tester that's easy to use and easy to carry

Its intuitive design makes it simple for anyone to quickly master AirCheck. Instant power-up and streamlined tests give answers in seconds so you can close trouble tickets faster – making technicians and users alike more productive. Easily manage test results and documentation using AirCheck Manager software. From start to finish, AirCheck helps take the guesswork out of everyday wireless troubleshooting.

Overview

AirCheck integrates all Wi-Fi technologies plus interference detection, channel scanning, and connectivity tests. Quickly troubleshoot the most common Wi-Fi pain points, including:

- Coverage problems
- Overloaded networks or channels
- Interference
- Connectivity problems
- Failed access points
- Rogue access points
- Security settings
- Client problems

In addition to generating instant reports and documentation, AirCheck Manager software allows you to set up multiple profiles and manage network and security settings for a single unit, or an entire fleet of AirCheck testers.

AirCheck Features

Supports 802.11a/b/g/n – All in one handheld tool.

Instant-on operation – Powers up in less than three seconds and automatically starts discovering networks, access points (APs), and channel activity.

Get answers fast – Intuitive user interface quickly gives you the answers you need in one or two button presses and displays the information on a bright color display.

Identifies security settings for each Network and Access Point: Open, WEP, WPA, WPA2, and/or 802.1x.

Pinpoints Wi-Fi traffic and interference – Shows how much of each channel's bandwidth is consumed by 802.11 traffic and interference, and the APs using each channel.

Finds rogue APs – Flags unauthorized APs. Helps you hunt them down with the LOCATE function or find them even faster with the optional directional antenna.

AirCheck Wi-Fi Tester	PRICE (£)
AirCheck Frontline Troubleshooting Kit with LinkRunner Pro	1796.00
External Uni-Directional Antenna, RSMA connector	2525.00
AirCheck Lithium Ion Replacement Battery	175.00
Power over Ethernet Detector 802.3AT	220.00
AirCheck Gold Support Services 1 yr	70.00
	215.00



Wi-Fi Troubleshooting Made Simple

www.comms-express.com/aircheck



16mm x 16mm Mini Trunking

DESCRIPTION	PRICE (£)
16mm x 16mm PVC Trunking (10 x 3mt)	15.54
16mm x 16mm Self Adhesive PVC Trunking (25x3mt)	59.55
16mm x 16mm Flat Tee (10 pack)	6.00
16mm x 16mm Internal Angle (10 pack)	4.00
16mm x 16mm External Angle (10 pack)	4.00
16mm x 16mm Flat Angle (10 pack)	4.00
16mm x 16mm Coupler (10 pack)	4.00
16mm x 16mm End Caps (10 pack)	4.00

FEATURES:

- Trunking provided in 3m lengths
- Easy fit self-adhesive trunking available
- Full range of accompanying fixings and accessories
- Suitable for up to 4 Cat5e cables



Internet Express Link **3101**



16mm x 25mm Mini Trunking

DESCRIPTION	PRICE (£)
16mm x 25mm PVC Trunking (10 x 3mt)	17.00
16mm x 25mm Self Adhesive PVC Trunking (25 x 3mt)	79.00
16mm x 25mm Flat Tee (10 pack)	6.00
16mm x 25mm Internal Angle (10 pack)	4.00
16mm x 25mm External Angle (10 pack)	4.00
16mm x 25mm Flat Angle (10 pack)	4.00
16mm x 25mm Coupler (10 pack)	4.00
16mm x 25mm End Caps (10 pack)	4.00

FEATURES:

- Trunking provided in 3m lengths
- Easy fit self-adhesive trunking available
- Full range of accompanying fixings and accessories
- Suitable for up to 8 Cat5e cables



Internet Express Link **3102**



25mm x 38mm Mini Trunking

DESCRIPTION	PRICE (£)
25mm x 38mm PVC Trunking (10 x 3mt)	25.00
25mm x 38mm Self Adhesive PVC Trunking (15 x 3mt)	69.00
25mm x 38mm Internal Angle (10 pack)	15.00
25mm x 38mm External Angle (10 pack)	13.00
25mm x 38mm Flat Tee (10 pack)	12.00
25mm x 38mm Flat Angle (10 pack)	12.00
25mm x 38mm Coupler (10 pack)	10.00
25mm x 38mm End Caps (10 pack)	8.50

FEATURES:

- Trunking provided in 3m lengths
- Easy fit self-adhesive trunking available
- Full range of accompanying fixings and accessories
- Suitable for up to 24 Cat5e cables



Internet Express Link **3103**



50mm x 50mm Maxi Trunking

DESCRIPTION	PRICE (£)
50mm x 50mm PVC Trunking (6 x 3mt)	38.50
50mm x 50mm Internal Angle	4.80
50mm x 50mm External Angle	4.80
50mm x 50mm Flat Tee	4.80
50mm x 50mm Flat Angle	4.80
50mm x 50mm Coupler	1.20
50mm x 50mm End Caps	1.20

FEATURES:

- Trunking provided in 3m lengths
- Easy fit self-adhesive trunking available
- Full range of accompanying fixings and accessories
- Suitable for up to 36 Cat5e cables



Internet Express Link **3105**



Coiled Mini Trunking

DESCRIPTION	PRICE (£)
16 x 16mm Coiled Mini Trunking (15mt Box)	18.65
16 x 16mm Coiled Self Adhesive Mini Trunking (15mt Box)	24.50
16 x 25mm Coiled Mini Trunking (15mt Box)	21.95
16 x 25mm Coiled Self Adhesive Mini Trunking (15mt Box)	29.00

Simple to use, just:

Fix in Flat Form After feeding the trunking from the carton the trunking is cut to length and secured in place using appropriate fixings or selfadhesive backing.

Form Sides The trunking sides are then folded into position being held securely in place with positive clip action.

Snap on Lid For a neat, attractive and above all functional system which is compatible with Mita's range of fittings and socket mounting boxes.

FEATURES:

- Compact Storage
- Faster Installation
- Reduced Waste
- Ease of Transport



Internet Express Link **3110**

100mm x 50mm Consort Delta 105



DESCRIPTION	PRICE (£)
100mm x 50mm Dado Trunking (3m base + 3m lid)	31.67
100mm x 50mm Internal Angle	7.65
100mm x 50mm External Angle	6.50
100mm x 50mm Flat Bend	7.65
100mm x 50mm End Cap	2.35
100mm x 50mm Coupler	5.30
100mm x 50mm Flat Tee	20.00
100mm x 50mm Dividing fillet	6.50
100mm x 50mm Single Accessory Box - 30mm Deep	2.95
100mm x 50mm Double Accessory Box - 30mm Deep	3.52
100mm x 50mm Lid Spacer (lid for spacing accessory boxes)	1.06

FEATURES:

- Single compartment trunking
- Built in option of a divider fillet for segregation into two compartments
- Full range of accessories available, making it an ideal choice to use as an entry level dado trunking system

 [Internet Express Link](#) **3107**

150mm x 60mm Cableline Prima 60



DESCRIPTION	PRICE (£)
150mm x 60mm Dado Trunking (3m base + 3m lid) and 2x 3m segregation fillets	53.00
150mm x 60mm Internal Angle	7.65
150mm x 60mm External Angle	7.65
150mm x 60mm Flat Bend	41.00
150mm x 60mm End Cap	2.85
150mm x 60mm Coupler	5.30
150mm x 60mm Flat Tee	55.00
150mm x 60mm Dividing Fillet	8.25
150mm x 60mm Single Accessory Box - 30mm Deep	2.95
150mm x 60mm Double Accessory Box - 30mm Deep	3.55
150mm x 60mm Lid Spacer (lid for spacing accessory boxes)	1.05

FEATURES:

- Three compartments with a single lid
- High capacity design from compact dimensions is assured thanks to the two unique segregation fillets, that are clipped into place either side of the central compartment

 [Internet Express Link](#) **3106**

Back Boxes



DESCRIPTION	PRICE (£)
Single Gang Surface Mount Back Box (32mm)	0.60
Single Gang Dryline Back Box (35mm) (Pack of 20)	14.34
Double Gang Surface Mount Back Box (27mm)	0.90
Double Gang Dryline Back Box (35mm) (Pack of 10)	14.50

FEATURES:

- Surface mount back boxes for installation on wall surfaces
- Dryline back boxes are suitable for installations in plaster board and false walls

 [Internet Express Link](#) **3104**

Excel - 3 Compartment Floor Boxes



DESCRIPTION	PRICE (£)
3 Compartment Floor Box with 1 x twin power	29.75
Twin Switched Socket for 3 Compartment Box	9.80
Triple Switched Socket for 3 Compartment Box	15.75
6 Way LJ6C Data Plate for 3 Compartment Box	2.50
Twin Gang Plate for 3 Compartment box	2.50
Euromod Plate for 3 Compartment Box (for upto 4 x Modules)	6.80
Blank Plate for 3 Compartment Box	3.00

FEATURES:

- Wide range of mounting plates
- Useable height to lid is 44mm
- One size cut out for 3 or 4 compartment box - 292 x 201mm
- Overall dimensions - 310 x 220 x 100mm deep

 [Internet Express Link](#) **3108**

Excel - 4 Compartment Floor Boxes



DESCRIPTION	PRICE (£)
4 Compartment Floor Box with 1 x twin power	35.00
Twin Switched Socket for 4 Compartment Box	14.90
4 Way LJ6C Data Plate for 4 Compartment Box	2.50
Blank Plate for 4 Compartment Box	2.50

FEATURES:

- Wide range of mounting plates
- Useable height to lid is 44mm
- One size cut out for 3 or 4 compartment box - 292 x 201mm

 [Internet Express Link](#) **3109**



Cable Ties

DESCRIPTION	PRICE (£)
100mm Cable Ties Natural - Pack of 100	1.30
100mm Cable Ties Black - Pack of 100	1.30
100mm Cable Ties Natural - Pack of 1000	8.40
100mm Cable Ties Black - Pack of 1000	8.40
200mm Cable Ties Natural - Pack of 100	2.12
200mm Cable Ties Black - Pack of 100	2.12
300mm Cable Ties Natural - Pack of 100	4.45
300mm Cable Ties Black - Pack of 100	4.45

FEATURES:

- Wide range of sizes
- Choice of colours
- Low smoke zero halogen



Internet Express Link **3302**



Velcro Cable Ties

DESCRIPTION	PRICE (£)
150mm Velcro Cable Ties - Black	0.24
230mm Velcro Cable Ties - Black	0.28
330mm Velcro Cable Ties - Black	0.42

FEATURES:

- Quick and easy installation
- Reusable
- Will not crush cables



Internet Express Link **3303**



Cable Tie Cradles

DESCRIPTION	PRICE (£)
Cable Tie Cradle 9.5x15mm - Natural	4.90
Cable Tie Cradle 16.23mm - Natural	11.00

FEATURES:

- Supplied in packs of 100
- Fixing screws included
- Made from polythene



Internet Express Link **3304**



Cable Tie Bases

DESCRIPTION	PRICE (£)
Self Adhesive Cable Tie Base 20 x 20mm Natural - Pack of 100	6.68
Self Adhesive Cable Tie Base 28 x 28mm Natural - Pack of 100	9.30

FEATURES:

- Choice of sizes
- Supplied in packs of 100
- Self adhesive



Internet Express Link **3305**



Cable Clips

DESCRIPTION	PRICE (£)
White Round Cable Clip for 3-5mm Cable Diameter	2.50
White Round Cable Clip for 5-7mm Cable Diameter	2.62
Black Round Cable Clip for 5-7mm Cable Diameter	2.86
White Round Cable Clip for 7-10mm Cable Diameter	3.04
Black Round Cable Clip for 7-10mm Cable Diameter	3.04

FEATURES:

- Choice of sizes
- Supplied in packs of 100
- Suits most cable sizes



Internet Express Link **3306**



Cable Tackers

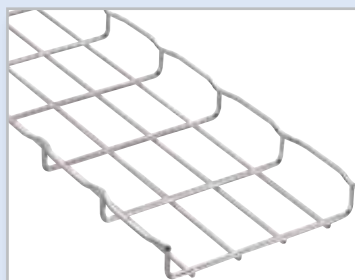
DESCRIPTION	PRICE (£)
T28 Cable Tacker up to 4.5mm	27.00
T28 11mm Galvanised Staples - Pack of 5000	9.95
T28 11mm White Staples - Pack of 5000	16.70
T36 Cable Tacker up to 6.0mm	31.00
T36 14mm Galvanised Staples - Pack of 5000	11.96
T36 14mm White Staples - Pack of 5000	19.94

FEATURES:

- T28 suitable for cables up to 4.5mm in diameter
- T36 suitable for cables up to 6.0mm in diameter
- Choice of galvanised or white staples



Internet Express Link **3307**



Cable Trays

DESCRIPTION

DESCRIPTION	PRICE (£)
50mm Wide Cable Tray - 30mm High	6.50
100mm Wide Cable Tray - 30mm High	7.35
150mm Wide Cable Tray - 30mm High	9.40
300mm Wide Cable Tray - 30mm High	18.35
Cable Tray Coupler - Pack of 50	51.00

FEATURES:

- Electro-plated zinc finish
- Supplied in 3m lengths



Internet Express Link

3310



Basket Matting

DESCRIPTION

DESCRIPTION	PRICE (£)
200mm wide, 6mm Deep Basket Matting	92.00
300mm wide, 6mm Deep Basket Matting	114.25
500mm wide, 6mm Deep Basket Matting	169.64

FEATURES:

- Flexible and lightweight closed cell rubber matting
- Class '0' fire category
- Supplied in 30m lengths



Internet Express Link

3311



Floor Matting

DESCRIPTION

DESCRIPTION	PRICE (£)
300mm wide x 13mm Deep Floor Matting	96.45
500mm wide x 13mm Deep Floor Matting	125.50
600mm wide x 13mm Deep Floor Matting	162.35

FEATURES:

- Flexible and lightweight closed cell rubber matting
- Class '0' fire category
- Resists moisture from screeded floors



Internet Express Link

3312



Flexible Conduit

DESCRIPTION

DESCRIPTION	PRICE (£)
16mm Flexible Conduit (11mm Inner Diameter) - 100mt	32.50
20mm Flexible Conduit (14mm Inner Diameter) - 100mt	35.50
25mm Flexible Conduit (18mm Inner Diameter) - 50m	28.00
16mm Gland and Locknut - Pack of 10	5.30
20mm Gland and Locknut - Pack of 10	6.30
25mm Gland and Locknut - Pack of 10	8.20

FEATURES:

- Black LSOH Polypropylene
- Highly flexible
- Choice of sizes



Internet Express Link

3313



Fast Install POD Box

DESCRIPTION

DESCRIPTION	PRICE (£)
4 Port Fast Install POD Box (4x LJ6c Module Cut Outs)	6.99
6 Port Fast Install POD Box (6x LJ6c Module Cut Outs)	7.99
8 Port Fast Install POD Box (8x LJ6c Module Cut Outs)	16.10
POD Box Anchor Bracket	1.75

FEATURES:

- 50% faster install than standard data boxes
- For installation with Flexible Conduit



Internet Express Link

3316



Cable Protector

DESCRIPTION

DESCRIPTION	PRICE (£)
CableSafe Cable Protector R07 - 3mt	15.95
CableSafe Cable Protector R07B - 3mt	18.50
CableSafe Cable Protector R06 - 3mt	24.95

FEATURES:

- Protects cables in temporary runs
- Sizes given are for maximum usable space
- Supplied in 10m Lengths



Internet Express Link

3314



Braided Sleeving

DESCRIPTION

DESCRIPTION	PRICE (£)
19mm (min) - 32mm (max) Braided Sleeving - 25m Reel	18.50
28mm (min) - 47mm (max) Braided Sleeving - 25m Reel	27.50
40mm (min) - 63mm (max) Braided Sleeving - 25m Reel	32.50

FEATURES:

- Lightweight and easily expandable
- Polyester braided sleeving is woven from 3 monofilaments



Internet Express Link

3315



SVGA Leads



DESCRIPTION	PRICE (£)
2m SVGA Monitor Cable Male-Male	3.25
3m SVGA Monitor Cable Male-Male	5.50
5m SVGA Monitor Cable Male-Male	9.50
10m SVGA Monitor Cable Male-Male	12.55
15m SVGA Monitor Cable Male-Male	15.66
20m SVGA Monitor Cable Male-Male	19.55
30m SVGA Monitor Cable Male-Male	29.50
2m SVGA Monitor Extension Cable Male-Female	3.20
3m SVGA Monitor Extension Cable Male-Female	5.50
5m SVGA Monitor Extension Cable Male-Female	9.50
10m SVGA Monitor Extension Cable Male-Female	12.55
15m SVGA Monitor Extension Cable Male-Female	15.66
20m SVGA Monitor Extension Cable Male-Female	19.95
30m SVGA Monitor Extension Cable Male-Female	29.50

FEATURES:

- Male - male cable for connection of PC to monitor
- Male - female cable to extend SVGA signal
- Supplied ready made with HD15 connectors

Internet Express Link **1101**

Video Splitters



DESCRIPTION	PRICE (£)
2 Port Video Splitter - 250Mhz	16.82
4 Port Video Splitter - 250Mhz	33.38
8 Port Video Splitter - 250Mhz	57.52
2 Port Video Splitter - 350Mhz	35.73
4 Port Video Splitter - 350Mhz	58.05
8 Port Video Splitter - 350Mhz	88.67

FEATURES:

- For connection of 2 PC's and 1 monitor or vice-versa
- All connections are HD15 female

Internet Express Link **1107**

USB Leads



DESCRIPTION	PRICE (£)
2 Metre USB 2.0 A (male) - B (male) Lead	1.08
3 Metre USB 2.0 A (male) - B (male) Lead	1.55
5 Metre USB 2.0 A (male) - B (male) Lead	1.76
2 Metre USB 2.0 A (male) - A (male) Lead	1.26
3 Metre USB 2.0 A (male) - A (male) Lead	1.89
5 Metre USB 2.0 A (male) - A (male) Lead	2.16
2 Metre USB 2.0 B (male) - B (male) Lead	1.25
3 Metre USB 2.0 B (male) - B (male) Lead	1.76
5 Metre USB 2.0 B (male) - B (male) Lead	2.48
2 Metre USB 2.0 A (male) - A (female) Extension Lead	1.14
3 Metre USB 2.0 A (male) - A (female) Extension Lead	1.35
5 Metre USB 2.0 A (male) - A (female) Extension Lead	1.40

FEATURES:

- A (male) - B (male) lead for standard connection between PC and peripherals (e.g. printer)
- A (male) - A (male) lead for connection of two PC's
- B (male) - B (male) lead for connection of two peripherals
- A (male) - A (female) lead to extend the length of a USB signal

Internet Express Link **1401**

USB Hubs



DESCRIPTION	PRICE (£)
4 Port USB 1.0 Powered Hub - Purple	8.09
4 Port USB 1.0 Powered Hub - Beige	8.09
2 Port USB 2.0 Powered Hub	13.93

FEATURES:

- Add extra USB ports without the need to install equipment internally
- Two port USB 2.0 hubs available

Internet Express Link **1402**

USB Adapters



DESCRIPTION	PRICE (£)
USB (A) Female - (B) Female Adapter	0.84
USB (A) Male - (B) Female Adapter	0.84
USB (A) Female - (B) Male Adaptor	0.84

FEATURES:

- Adapters to convert your USB port for different style USB connections

Internet Express Link **1405**



IEC-Lock Power Leads

DESCRIPTION	PRICE (£)
0.5m IEC C14 Male - IEC-Lock C13 Female Lead	1.69
1m IEC C14 Male - IEC-Lock C13 Female Lead	1.72
2m IEC C14 Male - IEC-Lock C13 Female Lead	2.30
3m IEC C14 Male - IEC-Lock C13 Female Lead	2.60
4m IEC C14 Male - IEC-Lock C13 Female Lead	3.00
2m Uk Plug to IEC-Lock C13 Female Lead	2.58

FEATURES:

- Suitable for use with 'Any' standard IEC inlet
- Unique 'Patented' Female C13 connector 'IEC-Lock'



Internet Express Link **3470**

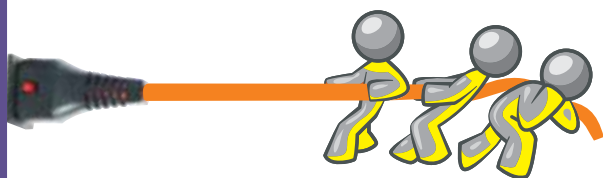
Stop Power Cables Being Accidentally Removed



Protection of computer equipment and servers from accidental disconnection helping to protect valuable data



Ideal for protecting appliances that are vulnerable to vibration where standard connectors may become accidentally disconnected



IEC Power Leads

DESCRIPTION	PRICE (£)
1m UK Mains - IEC C13 Female Power Lead	1.10
2m UK Mains - IEC C13 Female Power Lead	1.36
2m UK Mains - IEC C13 Female Power Lead (Right Angled)	1.96
3m UK Mains - IEC C13 Female Power Lead	2.18
5m UK Mains - IEC C13 Female Power Lead	2.98
2.5m IEC Male - 2 x Female C13 IEC Power Splitter Lead	3.50
0.5m IEC C14 Male - IEC C13 Female Power Extension Lead	1.00
1m IEC C14 Male - IEC C13 Female Power Extension Lead	1.22
2m IEC C14 Male - IEC C13 Female Power Extension Lead	1.44
3m IEC C14 Male - IEC C13 Female Power Extension Lead	1.88
5m IEC C14 Male - IEC C13 Female Power Extension Lead	2.84
2m UK Mains - IEC C19 Power Lead	4.50
2m IEC C19 - IEC C20 Extension Leads	4.44

FEATURES:

- Standard IEC connections
- Y-splitter cable available for connection of two devices from one socket



Internet Express Link **3402**



Full Range of
PDU's See
Pages 32-33

Mains Extensions & Surge Protectors

DESCRIPTION	PRICE (£)
2m 4 Way Mains Extension Lead	4.70
5m 4 Way Mains Extension Lead	5.50
2m 4 Way Surge Protected Extension Lead	5.50
2m 6 Way Surge Protected Extension Lead	5.95
5m 4 Way Surge Protected Extension Lead	8.50
5m 6 Way Surge Protected Extension Lead	8.95
10m Mains Extension Reel	14.50

FEATURES:

- 4-way standard sockets with either 2m or 5m fly lead
- Surge protection units available in either 4-way or 6-way with either a 2m or 5m fly lead



Internet Express Link **3201**



Ozone - Desktop Power and Data Units

DESCRIPTION	PRICE (£)
Ozone with 2 x UK Power	26.49
Ozone with 2 x UK Power + 2x Cat5e Outlets	41.99
Ozone with 2 x UK Power + 4x Cat5e Outlets	57.49
Ozone with 4 x UK Power	41.49
Ozone with 4 x UK Power + 2x Cat5e Outlets	57.49
Ozone with 4 x UK Power + 4x Cat5e Outlets	73.99

FEATURES:

- Ergonomic aluminium on desk product
- Individually fused power sockets
- 300mm power cord to Wieland plug
- Desk clamp fitted to product
- Complies with BS6396: 2002
- Mixes Power & Data



Internet Express Link **3211**



t: 0845 2000 256

monday - friday
8.30am - 5.30pm



e: sales@comms-express.com

30 million computer users don't trust the power grid.



APC Smart-UPS® 1000 provides power protection and battery backup during power outages.

They do trust APC. Shouldn't you?

Think of all that **you rely on your computer** for: personal and business files, financial information, broadband access, videos, photos, music and more. Increasingly, computers are the hub for managing our lives. And more people rely on APC to protect their hardware and data than any other uninterruptible power supply (UPS) brand.

and prevent downtime. It also guards against a power grid that is growing less reliable every day.

Power outages are an everyday reality of doing business in United Kingdom today and local companies must take this into consideration when it comes to business continuity plans. This may mean people

who rely on their computer are drifting into the "perfect storm," one that makes APC protection even more essential.

APC has a comprehensive line of power protection solutions to suit a range of applications. Already an APC user? Get the latest replacement battery cartridge for your unit or upgrade to a newer model.

Why is **APC the world's best selling power protection**? For 20 years, we have pioneered power protection technology. Our Legendary Reliability® enables you to **save your data, protect your hardware,**



Find out why 30 million people don't need to worry about losing their music, photos, and financial files.



APC Solutions for Every Level of Protection

Home

Best value battery backup and surge protection for home computers.



Home Office

Complete protection for home and small business computers.



Small Business

High-performance network power protection with best-in-class manageability for servers.



APC
Legendary Reliability®

APC Smart-UPS® - Line Interactive

APC award-winning Smart-UPS® is the most popular UPS in the world for servers, storage and networks. Trusted to protect critical data and equipment from power problems by supplying clean and reliable network-grade power. In addition to legendary reliability and manageability, Smart-UPS have extremely high efficiency at low, medium and high load levels making them ideal for today's multi-core or virtualised servers that have varying load consumption.

Available in a variety of form factors (tower, rack mount, rack/tower convertible) there is a model for every application and budget. Rack mounted Smart-UPS are ideal for powering Blade or density optimised servers in a distributed power protection environment as the primary or redundant protection. Smart-UPS® models have long been considered the benchmark for all network and server UPS's.



See Page 47
for Full Range
of Power Leads

APC Smart-UPS® 750VA

	PART NO.	PRICE (£)
Smart-UPS 750VA USB & Serial 230V	SUA750I	169.38
Smart-UPS 750VA USB RM 2U 230V	SUA750RMI1U	293.90
Smart-UPS 750VA USB RM 2U 230V	SUA750RMI2U	255.19

APC Smart-UPS® 1000VA

DESCRIPTION	PART NO.	PRICE (£)
Smart-UPS 1000VA USB & Serial 230V	SUA1000I	248.48
Smart-UPS 1000VA USB & Serial RM 1U	SUA1000RMI1U	398.60
Smart-UPS 1000VA USB & Serial RM 2U	SUA1000RMI2U	339.88

APC Smart-UPS® 1500VA

DESCRIPTION	PART NO.	PRICE (£)
Smart-UPS 1500VA USB & Serial 230V	SUA1500I	339.88
Smart-UPS 1500VA USB & Serial RM 2U	SUA1500RMI2U	426.83

APC Smart-UPS® 2200VA

DESCRIPTION	PART NO.	PRICE (£)
Smart-UPS 2200VA USB & Serial 230V	SUA2200I	499.10
Smart-UPS 2200VA USB & Serial RM 2U	SUA2200RMI2U	706.87

APC Smart-UPS® 3000VA

DESCRIPTION	PART NO.	PRICE (£)
Smart-UPS 3000VA USB & Serial 230V	SUA3000I	768.97
Smart-UPS 3000VA USB & Serial RM 2U	SUA3000RMI2U	906.73

APC Smart-UPS® 5000VA

DESCRIPTION	PART NO.	PRICE (£)
Smart-UPS 5000VA RM 5U 230V	SU5000RMI5U	1631.67

FEATURES:

- Intelligent battery management - Maximizes battery performance, life, and reliability through intelligent, precision charging
- Power conditioning - Protects connected loads from surges, spikes, lightning, and other power disturbances
- Automatic restart of loads after UPS shutdown - Automatically starts up the connected equipment upon the return of utility power
- Network manageable - Provides remote management of the UPS over the network
- User-replaceable batteries - Increases availability by allowing a trained user to perform upgrades and replacements of the batteries reducing Mean Time to Repair (MTTR)
- Hot-swappable batteries - Ensures clean, uninterrupted power to protected equipment while batteries are being replaced
- InfraStruXure Manager Compatible - Enables centralized management via the APC InfraStruXure® Manager



Internet Express Link **8301**

APC Smart-UPS® SC - Line Interactive



DESCRIPTION	PART NO.	PRICE (£)
Smart-UPS SC 420VA 230V	SC420I	83.90
Smart-UPS SC 450VA 230V - 1U	SC450RMI1U	132.11
Smart-UPS SC 620VA 230V	SC620I	128.29
Smart-UPS SC 1000VA	SC1000I	206.19
Smart-UPS SC 1500VA	SC1500I	278.91

FEATURES:

- Provides remote management of the UPS over the network
- View status and configure multiple UPSs simultaneously
- Provides protection of connected equipment from power surges on the data lines

Internet Express Link **8302**



t: 0845 2000 256

monday - friday
8.30am - 5.30pm



e: sales@comms-express.com

APC Smart-UPS® XL - Line Interactive

The extended run Smart-UPS XL has the capability to add external battery packs to scale runtime from minutes to hours typically needed for converged voice and data networks



DESCRIPTION	PART NO.	PRICE (£)
Smart-UPS XL 750VA USB & Serial	SUA750XLI	255.19
Smart-UPS XL 1000VA USB & Serial	SUA1000XLI	334.43
Smart-UPS XL 1400VA RM 3U 230V	SU1400RMXLIB3U	545.39
Smart-UPS XL Modular 1500VA 230V	SUM1500RMXLI2U	749.91
Smart-UPS XL 2200VA RM 3U 230V	SUA2200RMXLI3U	866.90
Smart-UPS XL 2200VA Tower 230V	SUA2200XLI	687.67
Smart-UPS XL 3000VA Tower 230V	SUA3000XLI	889.79
Smart-UPS XL 3000VA RM 3U 230V	SUA3000RMXLI3U	1087.27
Smart-UPS XL Modular 3000VA 230V	SUM3000RMXLI2U	1261.60

FEATURES:

- Allows quick addition of more runtime when needed
- Provides higher availability through intelligent precision-charging that maximizes battery performance, life and reliability



Internet Express Link

8303

APC Smart-UPS® RT - On-Line

Smart-UPS On-Line provides high density, true double-conversion on-line power protection for servers, voice / data networks, medical labs, and light industrial applications. Capable of supporting loads from 1 to 20kVA in a rack/tower convertible form, the Smart-UPS On-Line is available from 2U to 12U.

Recent family extensions at 15 and 20kVA enable support of power hungry blade servers or heavily loaded equipment racks. When business-critical systems require runtime in hours, not minutes, Smart-UPS On-Line can be configured with matching battery packs to comply with aggressive runtime demands. The included PowerChute management software provides unattended graceful shutdown of network operating systems.



DESCRIPTION	PART NO.	PRICE (£)
APC Smart-UPS RT 1000VA 230V	SURT1000XLI	433.45
APC Smart-UPS RT 2000VA RM 230V	SURT2000RMXLI	850.57
APC Smart-UPS RT 2000VA 230V	SURT2000XLI	750.89
APC Smart-UPS RT 3000VA RM 230V	SURTD3000RMXLI	1212.58
APC Smart-UPS RT 3000VA 230V	SURTD3000XLI	1112.11
APC Smart-UPS RT 5000VA RM 230V	SURTD5000RMXLI	1864.93
APC Smart-UPS RT 5000VA 230V	SURTD5000XLI	1761.14
APC Smart-UPS RT 6000VA RM 230V	SURT6000RMXLI	2079.01
APC Smart-UPS RT 6000VA 230V	SURT6000XLI	1974.77
APC Smart-UPS RT 8000VA RM 230V	SURT8000RMXLI	2650.36
APC Smart-UPS RT 8000VA 230V	SURT8000XLI	2552.19
APC Smart-UPS RT 10000VA 230V	SURT10000XLI	3100.75
APC Smart-UPS RT 15kVA RM 230V	SURT15KRMXLI	4908.08
APC Smart-UPS RT 20kVA RM 230V	SURT20KRMXLI	5485.50

FEATURES:

- Rack/Tower convertible, double conversion on-line UPS
- Providing high performance power protection for business critical equipment
- Extended run capabilities as standard and a high power density
- Enhanced availability with zero transfer time to and from batteries
- Automatic and manual bypass
- Wide input voltage range without using batteries
- Tight voltage and frequency regulation
- Emergency power off integration



Internet Express Link

8305

APC UPS Network Management Cards



DESCRIPTION	PART NO.	PRICE (£)
UPS Network Management Card 2	AP9630	147.82
UPS Network Management Card 2 with Environmental Monitoring	AP9631	239.06
UPS Network Management Card w/ Environmental Monitoring & Out of Band Management	AP9618	281.78

FEATURES:

- Integrates with InfraStruXure Central
- Remote UPS management
- Reboot equipment remotely
- Compatible with Smart-Slot enabled UPSs



Internet Express Link

8306

APC PowerChute® Business Edition

PowerChute Business Edition software provides UPS management and safe system shutdown for servers and workstations. In the event of an extended power outage, graceful unattended shutdown ensures no information is lost and time to recovery is minimized



DESCRIPTION	PART NO.	PRICE (£)
5 Node PowerChute Business Edition Deluxe	SSPCBE5	64.81
25 Node PowerChute Business Edition Deluxe	AP9411	179.00



Internet Express Link

8307

Lower Prices

Value TFT Console Drawers

DESCRIPTION

PRICE (£)

15" Value TFT Console Drawer	399.00
15" Value TFT with Built-in 8 port KVM	599.00
15" Value TFT with Built-in 16 port KVM	759.00
17" Value TFT Console Drawer	429.00
17" Value TFT with Built-in 8 port KVM	659.00
17" Value TFT with Built-in 16 port KVM	819.00

FEATURES:

- Choice of screen size
- KVM options
- On Screen Display (OSD) on LCD Display
- 105 keys ps/2 keyboard with easy glide touchpad
- Keylock mechanism



Internet Express Link

4502



Desktop KVM Switches

DESCRIPTION

PRICE (£)

2 Port Palm Size Desktop KVM Switch	22.95
4 Port Palm Size Desktop KVM Switch	38.13
2 Port Mini KVM with built in Cables PS/2	18.04
2 Port Mini KVM with built in Cables and Audio PS/2	22.37
2 Port Mini KVM with built in Cables and Audio USB	28.00
2 Port Audio USB includes 2 Sets of 1.3M Cables	55.21
4 Port Audio USB includes 4 Sets of 1.3M Cables	91.93

FEATURES:

- Small design suitable for desktop usage
- KVM with audio switches available



Internet Express Link

1201



Rack Mount KVM Switches

DESCRIPTION

PRICE (£)

4 Port Rackmount KVM On-screen Display (PS/2)	108.00
8 Port Rackmount KVM On-screen Display (PS/2)	138.00
16 Port Rackmount KVM On-screen Display (PS/2)	264.00

FEATURES:

- 19" rack design for mounting in cabinets
- Comes complete with mounting ears
- Up to 8 ports in 1u of space, 16 ports in 2u of space



Internet Express Link

1202



Aten PS2/USB KVM Switches

DESCRIPTION

PART NO. PRICE (£)

4 Port Aten PS2/USB KVM Switch	CS1754	116.99
8 Port Aten PS2/USB KVM Switch	CS1758	149.99

FEATURES:

- On-Screen Display (OSD)
- Hot key switching
- PS/2 and USB platform support



Internet Express Link

1223



Belkin - SMB Cat 5 KVM Switches

DESCRIPTION

PART NO. PRICE (£)

4-Port KVM SMB Cat5 KVM Switch	F1DP104Aea	192.99
8-Port KVM SMB Cat5 KVM Switch	F1DP108Aea	265.99
16-Port KVM SMB Cat5 KVM Switch	F1DP116Aea	413.99

FEATURES:

- Prevents unauthorised access to KVM switch and servers with password protection
- Easily expands your KVM configuration by daisy-chaining up to 16 KVM switches



Internet Express Link

1224

KVM Leads

DESCRIPTION

PRICE (£)

2m KVM Cable (2 x PS2 1 x SVGA)	4.56
3m KVM Cable (2 x PS2 1 x SVGA)	6.38
5m KVM Cable (2 x PS2 1 x SVGA)	9.56
10m KVM Cable (2 x PS2 1 x SVGA)	16.00
1.8m KVM Cable W/Audio (5 in 1)	5.88
5m KVM Cable W/Audio (5 in 1)	8.37
2mt USB KVM (1 x SVGA, 1 x USB)	6.50
3mt USB KVM (1 x SVGA, 1 x USB)	8.50
5mt USB KVM (1 x SVGA, 1 x USB)	12.50

FEATURES:

- Allows easy connection of your KVM switch
- All supplied with male-male connectors
- Supplied as all-in-one cables
- KVM USB cables are supplied with SVGA male & USB A male - SVGA female and USB B male connectors



Internet Express Link

1205



t: 0845 2000 256

monday - friday
8.30am - 5.30pm



e: sales@comms-express.com



Single Console KVM Switches

DESCRIPTION	PART NO.	PRICE (£)
4 Port CyberView PS/2 Single Console	CV-401	139.99
8 Port CyberView PS/2 Single Console	CV-801	199.99
16 Port CyberView PS/2 Single Console	CV-1601	384.99
8 Port CyberView PS/2/USB Single Console	CV-S801	294.99
16 Port CyberView PS2/USB Single Console	CV-S1601	439.99

Austin Hughes provides its entry level, highly cost efficient KVM switches based on the DB-15 interface. Using a specially designed 3 in one KVM cable with PS/2 or Combo fly lead plugs - allows a user to cost effectively specify the switch to match the exact server configurations

FEATURES:

- Control up to 128 Servers by 8 Level Cascade
- Enhanced rear cable management using 3 in 1 KVM cables
- Multi lingual on screen display menu
- Advanced user profiles and configurable OSD hot key combinations



Internet Express Link **1280**



Two Console KVM Switches

DESCRIPTION	PART NO.	PRICE (£)
8 Port CyberView PS/2/USB Two Console	CV-802	359.99
16 Port CyberView PS2/USB Two Console	CV-1602	479.99
8 Port CyberView IP PS/2/USB Two Console	IP-802	719.99
16 Port CyberView IP PS/2/USB Two Console	IP-1602	819.99

The second console allows a user to work securely via a remote Keyboard, monitor and mouse over a Cat5 link up to 300m away from the installed switch / servers. This plug and play technology requires no software to be installed on the servers but provides seamless secure access over Cat5 4 pair copper cable to all switch ports allowing access to your servers even if the Ethernet / WAN network has failed or is unavailable.

FEATURES:

- Enhanced data centre security with a second user or console up to 300m from the installed switch / server
- Enhanced rear cable management using 3 in 1 KVM cables
- Control up to 128 Servers by 8 Level Cascade
- Secure remote access over 300m (1000ft) of Cat5



Internet Express Link **1281**



Cat5e/Cat6 KVM Switches

DESCRIPTION	PART NO.	PRICE (£)
8 Port Cat5e/Cat6 Single Console	U-801	289.99
16 Port Cat5e/Cat6 Single Console	U-1601	329.99
32 Port Cat5e/Cat6 Single Console	U-3201	509.99
16 Port Cat5e/Cat6 Two Console	U-1602	484.99
32 Port Cat5e/Cat6 Two Console	U-3202	659.99

Expanding its range of server management solutions Austin Hughes introduces its new high density 8, 16 and 32 port Cat5 KVM switches. Designed to provide added benefits to its users the new switch range offers increased density, increased distances, enhanced cable management and multiplatform capabilities over traditional KVM switch platforms. Using either a PS/2 or USB dongle at the server end of the installation allows a user to cost effectively specify the switch to match the exact server configurations - multiplatform switches allow older or redundant servers to be migrated to servers with newer USB interfaces without replacing switch hardware

FEATURES:

- High density Cat5 KVM with either 8, 16 or 32 ports in 1U of rack space
- Increased distance of 40m (130ft) between your Server and KVM switch
- Enhanced rear cable management using Cat5 Cords
- Mix PS/2, USB and SUN with Multi-Platform switch capability
- Use of the RJ45 Cat5 interface allows a higher number of ports in smaller density



Internet Express Link **1282**



Austin Hughes KVM Leads

DESCRIPTION	PRICE (£)
1.8mt PS2 KVM Cable	7.50
1.8mt USB KVM Cable	8.25
1.8mt Combo PS2/USB Cable	12.75
PS2 Dongle for Cat5e/Cat6 KVM	35.25
USB Dongle for Cat5e/Cat6 KVM	35.25

FEATURES:

- Full range of Austin Hughes KVM Leads
- Compatibility assured with Austin Hughes Cyberview



Internet Express Link **1883**



Combo Cat6 IP KVM

Austin Hughes provides its entry level, highly cost efficient 19" rack mount 8 and 16 port KVM switches with the benefit of IP access.

From £259.99



Internet Express Link **1284**



Matrix Multi-User Cat6 KVM

These Multi-User Matrix Cat 6 KVM switches have many additional benefits. The key benefit being simultaneous access for up to one local, one remote and two IP users on four different KVM ports at any one time

From £649.99



Internet Express Link **1285**

Cyberview RKP11X Console Drawers



DESCRIPTION	PRICE (£)
Austin Hughes Cyberview RKP115 - 15" PS2/USB	479.00
<i>PS2 Interface With:</i>	
8 Port KVM	679.00
16 Port KVM	859.00
<i>USB Interface With:</i>	
8 Port KVM	719.00
16 Port KVM	870.00
Austin Hughes Cyberview RKP117 - 17" PS2/USB	549.00
<i>PS2 Interface With:</i>	
8 Port KVM	549.00
16 Port KVM	929.00
<i>USB Interface With:</i>	
8 Port KVM	838.00
16 Port KVM	996.00

FEATURES:

- 1U LCD Screen / Keyboard Drawer
- 15" or 17" TFT LCD screens
- Extended slide rails provide clearance distance between rack panel mounts and rear of the LCD screen
- Molded front panel with two point locking system.
- Slide rails with fixed positions to prevent draw movement when typing
- A selection of keyboards and mouse options
- All mounting hardware included
- KVM available with USB and PS2 options
- KVM over IP switch bundles available, taking up only 1u of space

[Internet Express Link](#) **4500**

The RKP series 1U LCD Key drawer is available with a 15 or 17" SAMSUNG Class A LCD panel, the rack mount drawer ships as standard with both PS/2 and USB (Combo) connectivity and with either touchpad or trackball in most European keyboard language layouts.

Cyberview N11X Console Drawers



DESCRIPTION	PRICE (£)
Austin Hughes Cyberview N117 - 17" PS2/USB	749.00
<i>PS2 Interface With:</i>	
Touchpad or Trackerball + 8 Port KVM	959.00
Touchpad or Trackerball + 16 Port KVM	1159.00
<i>USB Interface With:</i>	
Touchpad or Trackerball + 8 Port KVM	1059.99
Touchpad or Trackerball + 16 Port KVM	1229.99
Austin Hughes Cyberview N119 - 19" PS2/USB	1059.99
<i>PS2 Interface With:</i>	
Touchpad or Trackerball + 8 Port KVM	1229.99
Touchpad or Trackerball + 16 Port KVM	1429.99
<i>USB Interface With:</i>	
Touchpad or Trackerball + 8 Port KVM	1329.99
Touchpad or Trackerball + 16 Port KVM	1529.99

FEATURES:

- 1U LCD Screen / Keyboard Drawer
- 17" or 19" TFT LCD screens
- Cost efficient DB15 KVM integration
- Single or 'One Man' Installation slides for easy, quick installation
- Either PS/2 or USB input to the LCD drawer by cable selection
- Multiple keyboard language selections with either touchpad or trackball
- Slide rails with fixed positions to prevent drawer movement when typing
- Multi lingual on screen display menu
- High density Cat 6 KVM integration

[Internet Express Link](#) **4504**

The N series 1U Next Generation LCD Key drawer is available with a 17 or 19" SAMSUNG Class A LCD panel, the rack mount drawer ships as standard with both PS/2 and USB (Combo) connectivity and with either touchpad or trackball in most European keyboard language layouts.

The drawer is an enhanced version of the highly popular RKP series with improved aesthetics, a new front panel, single or one man installation rails and a new keyboard with standard numerical pad and the mouse module to the lower centre of the keyboard.

Optional High Density Cat5/Cat6 KVM

Austin Hughes offers high density integrated 16 and 32 port Cat5 KVM switches, designed to provide added benefits to its users the new switch range offers increased density, increased distances (40m) between the switch and server, enhanced cable management and multiplatform capabilities over traditional KVM switch platforms. Using either a PS/2 or USB dongle at the server end of the installation allows a user to cost effectively specify the switch to match the exact server configurations – multiplatform switches allow older or redundant servers to be migrated to servers with newer USB interfaces without replacing switch hardware

Dual Slide Cyberview - D117/119



The 'D' series 1U LCD Key drawer, with enhanced aesthetics and molded front panel with two point locking system, is dual slide, allowing the LCD to remain in the OPEN / Up position when the rack door is closed

From £739.99

[Internet Express Link](#) **4508**

WideScreen Cyberview - W119



Further advancing the design boundaries for 1U rack mount LCD keyboard draw solutions. The 'W' series offers its users Widescreen technology with ultra high screen resolution of 1440 x 900

From £629.99

[Internet Express Link](#) **4509**

Buffalo TeraStation III

Buffalo TeraStation™ III is a larger capacity NAS device with robust RAID 5 capability. The redundancy of four separate hard drives in RAID 5 or RAID 1 modes mean that even if a hard drive fails, your data is safe. With Hot Swap functionality, if a drive does fail, the TeraStation III automatically powers down the faulty drive, enabling you to safely remove and replace without losing any data, or down time. The replication function allows the connection of a second TeraStation via LAN port and replicates the data to improve reliability, fault tolerance or accessibility. The perfect solution for the home office or small to medium business that needs large, easy-to-deploy, easy-to-manage, redundant network attached storage.



Buffalo TeraStation III Desktop

DESCRIPTION	PRICE (£)
2TB Desktop TeraStation III - Desktop	567.30
6TB Desktop TeraStation III - Desktop	981.81
8TB Desktop TeraStation III - Desktop	1139.31

FEATURES:

- Hot Spare & Mirroring – a failover mechanism provides reliability for uninterrupted operation
- Active Directory Support – Simplify the management of each TeraStation



[Internet Express Link](#) **9231**



Buffalo TeraStation III Rackmount

DESCRIPTION	PRICE (£)
2TB Desktop TeraStation III - Rackmount	713.83
4TB Desktop TeraStation III - Rackmount	899.37
6TB Desktop TeraStation III - Rackmount	1165.94
8TB Desktop TeraStation III - Rackmount	1413.34

FEATURES:

- Hot Spare & Mirroring – a failover mechanism provides reliability for uninterrupted operation
- Active Directory Support – Simplify the management of each TeraStation



[Internet Express Link](#) **9236**

Buffalo TeraStation III iSCSI

Buffalo TeraStation™ III iSCSI is the perfect RAID storage solution for the small to medium business. This 4 bay, 4 drive, fully populated, affordable storage system uses the existing Ethernet infrastructure to communicate SCSI storage commands over the network. With high speed data transfer speeds of up to 92MB/s, features such as Hot Swap, enabling the removal of faulty hard drives without powering down the device and dual Ethernet ports with support for Port Trunking



Buffalo TeraStation III iSCSI Desktop

DESCRIPTION	PRICE (£)
2TB Desktop TeraStation III iSCSI - Desktop	735.98
4TB Desktop TeraStation III iSCSI - Desktop	1062.34

FEATURES:

- Fully populated, 4 bay, 4 drive device
- Up to 92MB/s iSCSI high speed data transfer
- Supports RAID levels 0, 1, 5, 10 and Standard



[Internet Express Link](#) **9639**

Buffalo TeraStation ES

Buffalo TeraStation™ ES is an affordable larger capacity NAS device with robust RAID 5 capability. With high speed transfer rates of up to 60MB/s, and with the redundancy of four separate hard drives in RAID 5 or RAID 1 modes, even if a hard drive fails, your data is safe. With Hot Swap and Hot Spare functionality, if a drive does fail, the TeraStation ES switches the failed drive to a spare drive, enabling you to safely remove and replace without losing any data, or down time.



Buffalo TeraStation Pro ES Desktop

DESCRIPTION	PRICE (£)
2TB Desktop TeraStation Pro ES - Desktop	452.10
4TB Desktop TeraStation Pro ES - Desktop	615.14
6TB Desktop TeraStation Pro ES - Desktop	860.56
8TB Desktop TeraStation Pro ES - Desktop	1028.54

FEATURES:

- Fully populated device, with 4 bays and 4 drives
- High-Speed - Up to 60MB/s high-speed data transfer rate
- Supports RAID level, 0, 1, 5, 10 and Standard



[Internet Express Link](#) **9033**



Buffalo TeraStation Duo

DESCRIPTION	PRICE (£)
1TB TeraStation Duo	288.91
2TB TeraStation Duo	383.97
4TB TeraStation Duo	544.33

FEATURES:

- High Speed Data Transfer Up to 65MB/s
- Quick Swap hard drive tray via the easy to remove, front panel



[Internet Express Link](#) **9232**



BUFFALO™

BIG Storage in small packages



TeraStation™ Duo
2 Bay, 2 Drive - 1 & 2TB

TeraStation™ III
4 Bay, 4 Drive - 2, 4, 6 & 8TB

Buffalo TeraStation™

**Larger capacity, easy to use, easy to manage, fully populated
Network Attached Storage, from the World Leader in Consumer NAS**

The perfect storage solution for the home office or small to medium business.

- **Back-up in real-time** – all your business data held on PC's MACs or external hard drives
- **Security** – automatically encrypt your data
- **Save Energy** – Automatically turns on and shuts down with your PC or Server

- **Environmentally Friendly** – Save up to 66% and reduce CO₂ omissions
- **WebAccess** – Remotely access from anywhere via PC, MAC or iPhone
- **RAID Redundancy** – Five operational modes: Standard, RAID 0, 1, 5 and 10
- **Hot Spare & Mirroring** – Failover mechanism provides reliability for uninterrupted operation
- **Quiet** – Near silent operation
- **Warranty** – 3 Years



NETGEAR ReadyNAS 4200



DESCRIPTION

12TB ReadyNAS 4200 (12x 1TB Drives)	4989.99
24TB ReadyNAS 4200 (12x 2TB Drives)	7734.99
12TB ReadyNAS 4200 +10G Support (12x 1TB Drives)	POA
24TB ReadyNAS 4200 +10G Support (12x 2TB Drives)	8364.99



FEATURES:

- 2U, 12-bay rackmountable unified network storage with 10 Gigabit networking for best-in-class performance
- High performance architecture
- Supports simultaneous NAS and SAN (iSCSI) functionality
- Support for both database and server virtualisation applications

[Internet Express Link](#) **9237**

NETGEAR ReadyNAS 3100



DESCRIPTION

4TB ReadyNAS 3100 (4x 1TB Drives)	POA
8TB ReadyNAS 3100 (4x 8TB Drives)	POA



FEATURES:

- Highly affordable and reliable 1U 4-bay rackmountable unified network storage with redundant power supplies
- Built-in replication, integrated backup, and offsite options for data protection
- Support for both database and server virtualisation applications

[Internet Express Link](#) **9238**

5% Education
Discount On All
NETGEAR
ReadyNAS

NETGEAR ReadyNAS 3200



DESCRIPTION

6.0TB ReadyNAS 3200 Rack NAS (6x 1TB Drives)	3430.99
12.0TB ReadyNAS 3200 Rack NAS (12x 1TB Drives)	4293.99
24.0TB ReadyNAS 3200 Rack NAS (12x 2TB Drives)	6664.99



FEATURES:

- High-density 2U 12-bay rack-mount with redundant power supplies for reliability and business continuity
- High performance architecture
- Support for both database and server virtualisation applications

[Internet Express Link](#) **9230**

NETGEAR ReadyNAS 2100



DESCRIPTION

2.0TB ReadyNAS 2100 Rack NAS (4x 500GB Drives)	1107.99
4.0TB ReadyNAS 2100 Rack NAS (4x 1TB Drives)	1431.99



FEATURES:

- 1U 4-bay network attached storage
- X-RAID for uninterrupted capacity expansion
- Supports simultaneous NAS and SAN (iSCSI) functionality

[Internet Express Link](#) **9222**

NETGEAR ReadyNAS NVX



DESCRIPTION

1TB ReadyNAS NVX NAS (2x 500GB Drives)	469.99
2TB ReadyNAS NVX NAS (2x 1TB Drives)	848.99
4TB ReadyNAS NVX NAS (4x 1TB Drives)	1173.99



FEATURES:

- High performance 4-bay advanced network storage
- Small footprint, low power consumption desktop design
- Supports iSCSI target mode and NAS simultaneously

[Internet Express Link](#) **9229**

NETGEAR ReadyNAS Pro



DESCRIPTION

1.5TB ReadyNAS Pro Desktop NAS (3x 500GB Drives)	1130.99
3TB ReadyNAS Pro Desktop NAS (3x 1TB Drives)	1303.99
6TB ReadyNAS Pro Desktop NAS (6x 1TB Drives)	1863.99



FEATURES:

- Award-winning 6-bay advanced desktop storage for business
- High performance read/write with speeds of over 100MB/s (800Mb/s)
- Simultaneous iSCSI target support- NAS and SAN in a single unit

[Internet Express Link](#) **9226**

Maximum performance and reliability for business-critical applications

ReadyNAS® 3100 1U 4-bay unified network storage
ReadyNAS 4200 2U 12-bay unified network storage



READYNAS 3100 KEY FEATURES

The ReadyNAS 3100 is a 1U 4-bay storage system designed for small and medium-sized businesses seeking reliable and affordable server virtualisation and file storage.

- Unified architecture supports simultaneous NAS and SAN functionality
- Highly resilient with dual redundant PSUs, hot swap fans, disks and dual Gigabit Ethernet ports
- 100MB/s+ performance supports the most demanding backup and virtualisation production environments

READYNAS 4200 KEY FEATURES

The ReadyNAS 4200 is a 2U 12-bay storage system designed for businesses needing high-quality, high-performance, resilient and affordable data storage capacity. With ReadyNAS 4200, SMBs have datacenter-class storage without breaking the bank!

- Up to 24TB of flexible storage in only 2U of rack space
- Dual 10 Gigabit networking for 450MB/s+ performance
- Reliable hot-swap redundant power supplies, fans and disks
- Integrated backup, built-in replication with secure offsite options for flexible data protection and D2D backups

NETGEAR, the NETGEAR logo and ReadyNAS are trademarks and/or registered trademarks of NETGEAR, Inc. and/or its subsidiaries in the United States and/or other countries. Other brand names mentioned herein are for identification purposes only and may be trademarks of their respective holder(s). Information is subject to change without notice. The 5-year hardware warranty only covers hardware, fans, and internal power supplies, and does not include external power supplies or software. Hardware modifications or customisation void the warranty. The warranty is only valid for the original purchaser and cannot be transferred. © 2010 NETGEAR, Inc. All rights reserved.



NETGEAR ProSafe Unmanaged Switches

NETGEAR ProSafe Unmanaged switches are 'plug-and-play'; making them perfect for businesses with a small and simple network. ProSafe unmanaged rackmount switches are 1U rack-mountable to fit in standard 19" racks and are packed with ease-of-use features to simplify your networking experience. Matched with thorough NETGEAR testing, they provide long-lasting performance you can count on.

NETGEAR also provide a wide range of desktop unmanaged switches for your small business, home, or home office. These provide switching functionality with a small footprint. Plus, like all ProSafe products, they come with a NETGEAR Lifetime warranty*



NETGEAR ProSafe Desktop Switches

DESCRIPTION	PRICE (£)
FS105 - 5 Port Fast Desktop Switch	21.99
FS108 - 8 Port Fast Desktop Switch	24.99
FS116 - 16 Port Fast Desktop Switch	77.49
GS105 - 5 Port Gigabit Desktop Switch	38.99
GS108 - 8 Port Gigabit Desktop Switch	61.11
GS116 - 16 Port Gigabit Desktop Switch	119.99

FEATURES:

- Automatically sense the right networking speed
- Operates silently, engineered without the need for internal fans
- No software to configure, operates as soon as connected

[Internet Express Link](#) **8401**



NETGEAR ProSafe Rack Switches

DESCRIPTION	PRICE (£)
JFS516 - Low Cost 16 Port Fast Rackmount Switch	48.99
JFS524 - Low Cost 24 Port Fast Rackmount Switch	71.99
JGS516 - 16 Port Gigabit Rackmount Switch	129.99
JGS524 - 24 Port Gigabit Rackmount Switch	164.99

FEATURES:

- Each port senses the right network speed and duplex mode (half or full)
- Operates silently, engineered without the need for internal fans

[Internet Express Link](#) **8402**



NETGEAR ProSafe Plus Switches

DESCRIPTION	PRICE (£)
FS116E - 16 Port ProSafe Plus Fast Switch	50.99
JFS524 - 24 Port ProSafe Plus Fast Rackmount Switch	
GS105E - 5 Port ProSafe Plus Gigabit Switch	41.99

FEATURES:

- Support network monitoring, traffic prioritisation and virtual network groups
- Supports Green Ethernet for reduced

[Internet Express Link](#) **8418**



NETGEAR ProSafe PoE Switches

DESCRIPTION	PRICE (£)
FS108P - 8 Port Fast Desktop Switch with 4 x POE	77.49
FS116P - 16 Port Fast Desktop Switch with 8 x POE	144.99

FEATURES:

- Cost Effective POE Solution for SMB

[Internet Express Link](#) **8419**

FULL LIFETIME HARDWARE WARRANTY ON NETGEAR® PROSAFE® BUSINESS PRODUCTS

NETGEAR ProSafe products are designed and built to the high standards required for business class networks.

To clearly demonstrate that NETGEAR products offer world-class quality, NETGEAR now offers the original purchaser a full lifetime hardware warranty on ProSafe products including switches, firewalls and wireless access points.



As long as a customer owns it and can show original proof of purchase, NETGEAR will replace any unit if it breaks!



*The Lifetime Hardware Warranty only covers hardware, fans, and internal power supplies, and does not include external power supplies or software. Hardware modifications or customisation void the warranty. The warranty is only valid for the original purchaser and cannot be transferred.

NETGEAR®
PROSAFE®

www.netgear.co.uk

NETGEAR ProSafe Smart Switches

NETGEAR ProSafe Smart Switches offer the most comprehensive product portfolio in the industry.

With products ranging from Smart to Advanced Smart Switches supporting technologies such as VoIP, video, and advanced security, businesses of all sizes can find the right product to fit their network applications. The intuitive Web-management interface, with ease-of-use features, allows for quick and cost-effective management.



Smart Managed 10/100 Switches

DESCRIPTION	PRICE (£)
FS726T - 24 Port 10/100 Smart Switch + 2 GB Ports	104.99
FS750T2 - 48 Port 10/100 Smart Switch + 2 GB Ports	249.99
FS726TP - 24 Port 10/100 Switch + 2 GB Ports & POE	185.99
FS728TP - 24 Port 10/100 Switch + 2 GB Ports All POE	219.99

FEATURES:

- Auto Uplink™ technology automatically adjusts for different Ethernet cables
- Performance monitoring, port configuration, VLAN for traffic control
- Rack mountable in a 19" rack

Internet Express Link **8406**



Smart Managed Gigabit Switches

DESCRIPTION	PRICE (£)
GS108T - 8 Port Smart Gigabit Switch	96.49
GS716T - 16 Port Smart Gigabit Switch + 2 SFP	154.49
GS724T - 24 Port Smart Gigabit Switch + 2 SFP	149.99
GS748T - 48 Port Smart Gigabit Switch + 4 SFP	399.99
GS724TP - 24 Port Smart Gigabit Switch + 2 SFP & POE	379.99
GS748TP - 48 Port Smart Gigabit Switch + 2 SFP & POE	689.99
GS724TPS - 24 Port Gigabit Smart Stackable Switch + PoE	556.51
GS748TPS - 48 Port Gigabit Smart Stackable Switch + PoE	1028.38

FEATURES:

- Smart switches with basic management at unmanaged switch prices
- 2 optional fibre ports available for fast, secure backbone

Internet Express Link **8408**



Smart 10/100 Stackable Switches

DESCRIPTION	PRICE (£)
FS728TS - 24 Port Stackable Smart Switch + 4 GB	174.99
FS752TS - 48 Port Stackable Smart Switch + 4 GB	309.99

FEATURES:

- Stack up to 6 units & manage them all from one IP address
- Combines Fast and Gigabit Connectivity with option to use
- Supports v1, v2c & v3 SNMP Network Management Protocol

Internet Express Link **8407**



Smart Gigabit Stackable Switches

DESCRIPTION	PRICE (£)
GS724TS - 24 Port Gigabit Smart Stackable Switch	279.99
GS748TS - 48 Port Gigabit Smart Stackable Switch	539.99
GS724TPS - 24 Port Gigabit Smart Stackable Switch + PoE	556.51
GS748TPS - 48 Port Gigabit Smart Stackable Switch + PoE	1028.38

FEATURES:

- Stack up to 6 switches and 288 ports
- Stack manageable through single IP address

Internet Express Link **8415**



NETGEAR Modules

DESCRIPTION	PRICE (£)
AGM721F - Fibre 1000Base-SX (SC) GBIC Module	84.99
AGM722F - Fibre 1000Base-LX (SC) GBIC Module	305.99
AGM731F - Fibre 1000Base-SX (LC) SFP Module	124.99
AGM732F - Fibre 1000Base-LX (LC) SFP Module	282.99
AGM733 - Fibre 1000BASE-ZX Fibre SFP Module	1166.99
AX741 - 10GB XFP Adapter	440.99
AXM751 - 10GB SR XFP Module	994.99
AXM752 - 10GB LR XFP Module	1582.99

FEATURES:

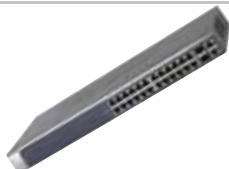
- Add gigabit fibre capability to your NETGEAR switch

Internet Express Link **8405**

NETGEAR Layer 2 Managed Switches

NETGEAR ProSafe FSM Series Layer 2 and Layer 3 Managed Switches are ideal for SMB or branch offices needing reliable, high-performance switching that is easier to use. Full L2 and L3 capabilities, non-blocking architecture and wire-speed performance provides a secure network foundation optimised for data, wireless and IP Communications. Delivering best-in-class networking that is designed to meet the needs of growing networks, these switches are simple to set up and use, with a next-generation browser interface for easy configuration. NETGEAR ProSafe FSM series L2/L3 Fast Ethernet Switches are optimally priced, rich in features and easy to manage.

NETGEAR ProSafe GSM Gigabit series switches deliver maximum throughput and flexibility where you need it - to high-speed, high-density workgroups at the edge of the network, in the backbone of growing networks or for bandwidth-thirsty file and application servers. The full wire-speed, non-blocking design with Layer 2 and Layer 3 switching functionalities ensure reliable network segmentation and routing between VLANs. Robust security, Quality of Service, and management features deliver intelligent edge connectivity for essential business applications.



Layer 2 10/100 Managed Switches

DESCRIPTION

FSM726 - 24 Port Layer 2 10/100 Switch

PRICE (£)

144.99

FEATURES:

- Meets Mgmt needs with: SNMP, RMON, VLAN, QoS & port trunking



[Internet Express Link](#)

8412



Layer 2 Gigabit Managed Switches

DESCRIPTION

GSM7224 - 24 Port Layer 2 Gigabit Switch

PRICE (£)

429.99

GSM7248 - 48 Port Layer 2 Gigabit Switch

899.99

FEATURES:

- Full wire-speed Gigabit Ethernet throughput at an affordable price
- Complete Layer 2 management feature set



[Internet Express Link](#)

8413

NETGEAR Layer 3 Managed Switches

NETGEAR ProSafe Layer 3 Switches are ideal for growing SMBs. A full suite of Layer 3 functionality ensures reliable routing between VLANs and network segmentation where and when you need it, at no additional cost. By configuring the switches into a stack of up to 8 units across a 48 Gbps bi-directional ring, a high-density, single IP-addressable switch can be built.



Layer 3 10/100 Managed Switches

DESCRIPTION

FSM7352S - 48 Port Layer 3 Stackable 10/100 + 4 GB

PRICE (£)

440.49

FSM7328PS - 24 Port Layer 3 Fast Switch + 2 GB & POE

689.99

FSM7352PS - 48 Port Layer 3 Stackable + 4 GB & POE

1702.49

FEATURES:

- Lower cost per port than comparable 10/100 switches
- Enable Fiber connectivity with SFP Gigabit Ports



[Internet Express Link](#)

8414



Layer 3 Gigabit Managed Switches

DESCRIPTION

GSM7312 - 12 Port Layer 3 Gigabit Switch

PRICE (£)

709.99

GSM7328S - 24 Port L3 Stackable + 4x 10GB Slots

1388.49

GSM7352S - 48 Port L3 Stackable + 4x 10GB Slots

2082.49

GSM7328FS - 24 SFP Port L3 Stackable GB Switch

1899.49

FEATURES:

- High-speed, Layer 3 Managed Gigabit Switching at an affordable price
- Layer 3 routing combined with L2/L3/L4 QoS, bandwidth provisioning and access control



[Internet Express Link](#)

8417

Claim your 10 Gigabit NETGEAR® Module worth over £1500!



When you buy NETGEAR Managed Switch models GSM7328FS, GSM7328S or GSM7352S

Extra 5% Discount for Education & Public Sector

NETGEAR ProSafe business class products are ideal for schools, colleges and universities. Whether you work in a single building or multi-site campus, the ProSafe range can meet your individual requirements and budget. NETGEAR offers a 5% discount to all education and public sector customers.

FREE SERVICE: Networking Site Survey



Networking Health Checks for Education

NETGEAR® is helping schools and other educational establishments realise their networking potential by offering free Networking Site Surveys



The service includes:

- Examination of wireless infrastructure & any existing hardware
- Signal testing across the site - establishing strengths/weaknesses
- Testing network security
- Help to advise solutions for any areas that need improvement



For details, please email weloveschool@netgear.com

PROSAFE®

PROSECURE™

NETGEAR®
Connect with Innovation™

HP ProCurve Switches

HP ProCurve Networking helps customers adapt to the changing needs of their environment by delivering a choice of the best available products, solutions and services that are scalable, flexible, and adaptive. ProCurve's complete and robust line of products are engineered to legendary HP quality standards—backed by ProCurve's service, support, training and industry-leading warranty



ProCurve 408 Switch Series

DESCRIPTION	PART No.	PRICE (£)
HP ProCurve Switch 408	J4097C	47.77

The HP ProCurve Switch 408 is a compact, unmanaged 8-port 10/100 switch that offers half-/full-duplex 10/100 auto-sensing on every port and ProCurve Auto-MDIX on all ports for easy expansion. It is ideal for building small networks or connecting peripherals with any combination of 10 Mb and 100 Mb devices

FEATURES:

- Unmanaged plug-and-play operation
- 8 10/100 ports
- Compact and quiet fanless design
- Industry-leading warranty

[Internet Express Link](#) **8620**



ProCurve 1400 Switch Series

DESCRIPTION	PART No.	PRICE (£)
HP ProCurve Switch 1400-8G	J9077A	45.72
HP ProCurve Switch 1400-24G	J9078A	197.77

The HP ProCurve Switch 1400 Series provides plug-and-play simplicity for high-bandwidth connectivity. The ProCurve Switch 1400 Series consists of two unmanaged switches. The HP ProCurve Switch 1400-24G is a 24-port 10/100/1000 switch with 22 10/100/1000 ports and 2 dual-personality ports. The HP ProCurve Switch 1400-8G is a small-form-factor switch with 8 10/100/1000 ports. Ideal for deployment in open spaces, both switches feature silent operation via a fanless design.

FEATURES:

- Unmanaged Layer 2 Gigabit switch
- 8- and 24-port models
- Fanless switch for silent operation
- Two dual-personality mini-GBIC slots (J9078A)
- Industry-leading warranty

[Internet Express Link](#) **8621**



ProCurve 1700 Switch Series

DESCRIPTION	PART No.	PRICE (£)
HP ProCurve Switch 1700-8	J9079A	49.99
HP ProCurve Switch 1700-24	J9080A	112.07

The HP ProCurve Switch 1700 Series consists of two 10/100, fanless, Web-managed switches that are ideal for open offices that require silent operation or businesses making the transition from unmanaged to managed networks. The HP ProCurve Switch 1700-24 is a 24-port switch with 22 10/100 ports plus 2 dual-personality ports. The HP ProCurve Switch 1700-8 is a small-form-factor switch with seven 10/100 ports and one 10/100/1000 port. The ProCurve Switch 1700 Series enables increased network capabilities without added complexity.

FEATURES:

- Web-managed Layer 2 10/100 switch
- 8- and 24-port models
- Fanless switch for silent operation
- Two dual-personality mini-GBIC slots (J9080A)
- Industry-leading warranty

[Internet Express Link](#) **8622**



ProCurve 1800G Switch Series

DESCRIPTION	PART No.	PRICE (£)
HP ProCurve Switch 1810G-8	J9449A	86.67
HP ProCurve Switch 1810G-24	J9450A	234.82

The HP ProCurve 1810G Switch Series provides reliable, plug-and-play Gigabit network connectivity. As the follow-on to the popular HP ProCurve Switch 1800 Series, the 1810G series provides additional network security capabilities, enhancements to ease of use, improved energy efficiency, and expanded deployment flexibility. The series consists of 8- and 24-port 10/100/1000 Web-managed switches. The HP ProCurve 1810G-24 Switch offers two dual-personality ports for optional fiber uplinks, while the HP ProCurve 1810G-8 Switch can optionally be powered by an upstream Power over Ethernet (PoE) switch. Both switches offer silent operation and multiple mounting options for flexible installation. The 1810G series offers network security protection against denial-of-service attacks, includes the Kensington lock for theft protection, and offers legendary HP quality backed by the ProCurve Lifetime Warranty at an affordable price.

FEATURES:

- Web-managed Layer 2 Gigabit switch
- 8- and 24-port models
- Fanless switch for silent operation
- Two dual-personality mini-GBIC slots (J9450A)
- Powered by IEEE 802.3af PoE (J9449A)
- Industry-leading warranty

[Internet Express Link](#) **8623**



ProCurve 2124 Switch Series

DESCRIPTION	PART No.	PRICE (£)
HP ProCurve Switch 2124	J4868A	121.11

The HP ProCurve Switch 2124 is an unmanaged 24-port switch with 10/100 auto-sensing per port and one open transceiver slot for a 100Base-FX uplink. The ProCurve Switch 2124 offers ProCurve Auto-MDIX on all 10/100 ports.

FEATURES:

- Unmanaged plug-and-play operation
- 24 10/100 ports
- One transceiver slot for 100Base-FX connectivity
- Rack mountable with included hardware
- Industry-leading warranty

[Internet Express Link](#) **8624**

ProCurve 2510 Switch Series



DESCRIPTION	PART No.	PRICE (£)
HP ProCurve Switch 2510-24	J9019B	210.50
HP ProCurve Switch 2510-48	J9020A	931.10
HP ProCurve Switch 2510G-24	J9279A	461.11
HP ProCurve Switch 2510G-48	J9280A	931.10

Designed to provide essential solutions to small and medium businesses, the HP ProCurve Switch 2510 Series consists of four Layer 2 managed switches that provide reliable 10/100 and 10/100/1000 connectivity. Building off of the popularity of the HP ProCurve Switch 2510-24, a 24-port 10/100 switch with two dual-personality ports, the 2510 series has expanded to include a higher-density HP ProCurve Switch 2510-48, with 48 10/100 ports and four Gigabit uplinks. Additionally, the 2510G switches add Gigabit to the 2510 series, with the 2510G-24 and 2510G-48, 24- and 48-port 10/100/1000 switches, each with four dual-personality ports—ideal for businesses that are ready to upgrade to increased network performance.

FEATURES:

- Managed Layer 2 feature set
- 24 or 48 10/100 or Gigabit ports
- Two mini-GBIC slots for fiber connectivity
- Quiet fanless design (J9019B)
- Industry-leading warranty

[Internet Express Link](#) **8625**

ProCurve 2520 Switch Series



DESCRIPTION	PART No.	PRICE (£)
HP ProCurve 2520-8-PoE Switch	J9137A	325.13
HP ProCurve 2520-24-PoE Switch	J9138A	515.63
HP ProCurve 2520G-8-PoE Switch	J9298A	497.47
HP ProCurve 2520G-24-PoE Switch	J9299A	1032.12

The HP ProCurve 2520 Switch Series is ideally suited for small and medium businesses looking to deploy voice, video, and/or wireless solutions that require Power over Ethernet (PoE) connectivity. The series consists of four switches: the HP ProCurve 2520-8-PoE, the HP ProCurve 2520-24-PoE, the HP ProCurve 2520G-8-PoE, and the HP ProCurve 2520G-24-PoE Switch. The four models offer a choice of either Fast Ethernet or Gigabit connectivity. All models also include support for dual-personality Gigabit ports that can be used for either copper or fiber connectivity. All products are fully managed via SNMP, command-line interface (CLI), and graphical user interface (GUI) and offer a Layer 2 feature set. In addition, the products provide deployment flexibility with compact, quiet, and energy-efficient designs.

FEATURES:

- Fully managed Layer 2 switch in 8 or 24 ports
- Choice of Fast Ethernet or Gigabit PoE models
- Power over Ethernet for voice, video, and wireless
- Energy-efficient design and quiet operation
- Rack-mountable and compact form factors

[Internet Express Link](#) **8626**

ProCurve 2810 Switch Series



DESCRIPTION	PART No.	PRICE (£)
HP ProCurve Switch 2810-24G	J9021A	875.11
HP ProCurve Switch 2810-48G	J9022A	1679.67

The HP ProCurve Switch 2810 Series consists of two switches: the 24-port HP ProCurve Switch 2810-24G with 20 10/100/1000 ports, and the 48-port HP ProCurve Switch 2810-48G with 44 10/100/1000 ports. Each switch also has four dual-personality ports for RJ-45 10/100/1000 or mini-GBIC fiber Gigabit connectivity. Ideal for high-performance and secure 10/100/1000 connectivity, the 2810 series offers access security and advanced prioritization and traffic-monitoring capabilities. The 2810 series is cost-effective and easy to use, with a shallow, 1U form factor that provides operational flexibility for use in smaller wiring closets.

FEATURES:

- Managed Layer 2 feature set with 24 or 48 Gb ports
- sFlow, source port filtering, enhanced security
- Optional redundant power supply
- Four dual-personality mini-GBIC slots

[Internet Express Link](#) **8627**

ProCurve 2610 Switch Series



DESCRIPTION	PART No.	PRICE (£)
HP ProCurve Switch 2610-24	J9085A	289.36
HP ProCurve Switch 2610-24/12PWR	J9086A	480.32
HP ProCurve Switch 2610-24-PWR	J9087A	723.38
HP ProCurve Switch 2610-48	J9088A	570.60
HP ProCurve Switch 2610-48-PWR	J9089A	1425.76

The HP ProCurve Switch 2610 Series consists of five switches—the HP ProCurve Switch 2610-24 and 2610-48 provide 24 and 48 ports of 10/100 connectivity. The HP ProCurve Switch 2610-24 is fanless, providing quiet operation and making it ideal for deployment in open spaces. The HP ProCurve 2610-24/12PWR, 2610-24-PWR, and 2610-48-PWR are IEEE 802.3af-compliant for Power over Ethernet (PoE) and provide up to 15.4 W for 12, 24, and 48 ports. The 2610-24/12PWR has 24 10/100 ports and provides 12 ports of PoE. All switches include two 10/100/1000Base-T ports and two mini-GBIC slots for Gigabit uplink connectivity. An optional redundant external power supply is also available to provide redundancy in the event of a power supply failure. With static routing, robust security and management features, free lifetime warranty, and free software updates, the 2610 series is a cost-effective solution for customers who are building converged enterprise edge networks.

FEATURES:

- Access layer cost-effective switch
- Layer 2 plus static IP routing
- Scalable 10/100 connectivity
- Gigabit fiber uplinks
- Enterprise-class features

[Internet Express Link](#) **8628**



HP ProCurve Lifetime Warranty

HP ProCurve Networking products set the standards for quality and reliability. Our products and solutions are also backed by the best warranty in the industry.

Small Business Switches From Cisco



As the industry's leading switching solution, Cisco switching solutions for small business help keep your network up and running



Cisco Small Business Switches



Cisco Small Business switches include three series of products – Unmanaged, Smart Managed and Managed switches – to meet the varying needs of each small business customer. These switches span from basic unmanaged switches that require no real installation, just plug and go, to the more complex managed switches that can be configured to meet the demanding requirements of a growing business.

These switches have been designed for the value minded customer that wants to create a local area network, backed up by the renowned Cisco brand, trusted by large corporations the world over.

Cisco 100 Series Unmanaged Switches

Cisco 100 Series Switches deliver powerful network performance and flexibility for small business networks, without the complexity. With no installation software and nothing to configure, you get an affordable, reliable network that just works, right out of the box

Cisco 100 Series Desktop Switches



DESCRIPTION	PRICE (£)
Cisco SD205 - 5 Port 10/100 Desktop Switch	21.00
Cisco SD208 - 8 Port 10/100 Desktop Switch	30.69
Cisco SD208P - 8 Port 10/100 + 4x PoE Desktop Switch	86.40
Cisco SD216 - 16 Port 10/100 Desktop Switch	50.07
Cisco SD2005 - 5 Port Gigabit Desktop Switch	37.96
Cisco SD2008 - 8 Port Gigabit Desktop Switch	46.83

FEATURES:

- Choice of Fast Ethernet and Gigabit Ethernet connectivity
- Sets up in minutes with no software to install or configuration requirements
- Limited Lifetime Warranty to protect your investment

[Internet Express Link](#) **8850**

Cisco 100 Series Rackmount Switches



DESCRIPTION	PRICE (£)
Cisco SR216 - 16 Port 10/100 Rackmount Switch	50.07
Cisco SR224 - 24 Port 10/100 Rackmount Switch	72.68
Cisco SR224G - 24 Port 10/100 + 2x Gigabit Uplinks/SFP	113.06
Cisco SR2016 - 16 Port Gigabit Rackmount Switch	139.70
Cisco SR2024 - 24 Port Gigabit Rackmount Switch	209.96
Cisco SR2024C - 24 Port 10/100 + 2x Gigabit Uplinks/SFP	185.72

FEATURES:

- Choice of Fast Ethernet and Gigabit Ethernet connectivity
- Sets up in minutes with no software to install or configuration requirements
- Limited Lifetime Warranty to protect your investment

[Internet Express Link](#) **8851**

Cisco Small Business Smart Switches

Cisco® Small Business Smart Switches deliver robust features and capabilities that help boost your productivity and increase your efficiency. Smart switches are managed through a simple web interface that makes setup and management easy. Designed for small businesses that need more than what an unmanaged switch can provide, but not ready for the complexity and cost of a managed switch, smart switches provide the ideal solution.

With Cisco Small Business Smart Switches, you can enjoy the features of managed switches such as basic quality of service (QoS), security, and availability. Choose from 5- to 48-port Fast Ethernet, Gigabit Ethernet and Power over Ethernet (PoE) models. When your small business needs basic network switch functionality with minimal hassle, Cisco Small Business Smart Switches deliver at a fraction of the cost.

Cisco 10/100 Smart Switches



DESCRIPTION	PRICE (£)
Cisco SLM224G - 24 Port 10/100 + 2x Gigabit Uplinks/SFP	118.09
Cisco SLM248G - 48 Port 10/100 + 2x Gigabit Uplinks/SFP	225.30
Cisco SLM224P - 24 Port 10/100 + 2x Gigabit Uplinks/SFP + 12 Port PoE	257.60
Cisco SLM248P - 48 Port 10/100 + 2x Gigabit Uplinks/SFP + 24 Port PoE	470.78

FEATURES:

- An easy-to-operate management interface that's accessible from a web browser
- 10/100 Fast Ethernet with gigabit/SFP ports
- Optional Power over Ethernet

[Internet Express Link](#) **8852**

Cisco Gigabit Smart Switches



DESCRIPTION	PRICE (£)
Cisco SLM2008 - 8 Port Gigabit Smart Switch	76.71
Cisco SLM2024 - 24 Port Gigabit Smart Switch + 2x SFP Ports	263.24
Cisco SLM2048 - 48 Port Gigabit Smart Switch + 2x SFP Ports	516.00

FEATURES:

- An easy-to-operate management interface that's accessible from a web browser
- Quality of service that prioritizes video and voice transmissions
- Limited Lifetime Warranty to protect your investment

[Internet Express Link](#) **8853**

Cisco Small Business Managed Switches

Cisco® Small Business Managed Switches form the core of a small business network, offering the perfect mix of configurability, speed, and stability to help keep your network running smoothly at a price you can afford.



As a small business owner, you have network needs that are simple to define but not always simple to achieve. You need a network that can handle an increase in applications and traffic. A network that remains available even during an outage. A network that protects your business information and gives access to the right people. And one that will grow with you as your business grows without increasing your costs. Cisco offers Small Business Managed Switches to meet these network needs

With Cisco Small Business Managed Switches, you get powerful performance at a fraction of the cost. Best of all, Cisco Small Business Managed Switches come with a simple, web-based management system that frees you to focus on your business—not maintaining your network.

Simply put, managed switches provide you with the flexibility, reliability, and security you need to boost productivity—and efficiency.

Cisco 10/100 Managed Switches



DESCRIPTION	PRICE (£)
Cisco SRW208G - 8 Port 10/100 + 1x Gigabit Uplinks/SFP	120.32
Cisco SRW224G4 - 24 Port 10/100 + 4x Gigabit Uplinks & 2x SFP Module Slots	152.62
Cisco SRW248G4 - 48 Port 10/100 + 4x Gigabit Uplinks & 2x SFP Module Slots	237.12
Cisco SRW224G4P - 24 Port 10/100 + 4x Gigabit Uplinks & 2x SFP Module Slots + 24 Port PoE	278.82
Cisco SRW248G4P - 48 Port 10/100 + 4x Gigabit Uplinks & 2x SFP Module Slots + 24 Port PoE	567.68

FEATURES:

- Support for advanced quality of service (QoS) mechanisms to keep your critical, real-time network applications running at top performance levels
- Advanced security functionality that removes the threat of unauthorized network access
- Optional Power over Ethernet cost-effectively powers wireless access points

[Internet Express Link](#) **8855**

Cisco 10/100 Managed Stack Switches



DESCRIPTION	PRICE (£)
Cisco SFE2000 - 24 Port 10/100 + 4x Gigabit Uplinks & 2x SFP Module Slots Stackable Switch	267.87
Cisco SFE2010 - 48 Port 10/100 + 2x Gigabit Uplinks & 2x SFP Module Slots Stackable Switch	480.47
Cisco SFE2000P - 24 Port 10/100 + 4x Gigabit Uplinks & 2x SFP Module Slots Stackable Switch + 24 Port PoE	423.13
Cisco SFE2010P - 48 Port 10/100 + 2 Gigabit Uplinks & 2x SFP Module Slots Stackable Switch + 48 Port PoE	864.84

FEATURES:

- Support for advanced quality of service (QoS) mechanisms to keep your critical, real-time network applications running at top performance levels
- Advanced security functionality that removes the threat of unauthorized network access
- Optional Power over Ethernet cost-effectively powers wireless access points

[Internet Express Link](#) **8856**

Cisco Gigabit Managed Switches



DESCRIPTION	PRICE (£)
Cisco SRW2008 - 8 Port Managed Gigabit + 2x SFP	135.90
Cisco SRW2016 - 16 Port Managed Gigabit + 2x SFP	238.21
Cisco SRW2024 - 24 Port Managed Gigabit + 2x SFP	323.00
Cisco SRW2048 - 48 Port Managed Gigabit + 4x SFP	580.60
Cisco SRW2008P - 8 Port Managed Gigabit Switch + 2x SFP & 8 Port PoE	216.41
Cisco SRW2024P - 24 Port Managed Gigabit Switch + 2x SFP & 24 Port PoE	534.69

FEATURES:

- Support for advanced quality of service (QoS) mechanisms to keep your critical, real-time network applications running at top performance levels
- Advanced security functionality that removes the threat of unauthorized network access
- Optional Power over Ethernet cost-effectively powers wireless access points

[Internet Express Link](#) **8857**

Cisco Gigabit Managed Stack Switches



DESCRIPTION	PRICE (£)
Cisco SGE2000 - 24 Port Stackable Managed Gigabit Switch + 4 SFP	479.66
Cisco SGE2010 - 24 Port Stackable Managed Gigabit Switch + 4 SFP	883.34
Cisco SGE2000P - 24 Port Stackable Managed Gigabit Switch + 4 SFP & 24 Port PoE	643.59
Cisco SGE2010P - 48 Port Stackable Managed Gigabit Switch + 4 SFP & 48 Port PoE	1304.93

FEATURES:

- Support for advanced quality of service (QoS) mechanisms to keep your critical, real-time network applications running at top performance levels
- Advanced security functionality that removes the threat of unauthorized network access
- Optional Power over Ethernet cost-effectively powers wireless access points

[Internet Express Link](#) **8858**

10/100 Desktop Switches



DESCRIPTION

DESCRIPTION	PRICE (£)
5 Port 10/100 Desktop Switch	12.00
8 Port 10/100 Desktop Switch	15.00
8 Port 10/100 Desktop Switch + 4 Port POE	58.99

FEATURES:

- Compact design
- Ideal for small installations or desktop use
- LEDs to indicate link/receive, partition, power and collision status

Internet Express Link **8001**

10/100 Rackmount Switches



DESCRIPTION

DESCRIPTION	PRICE (£)
16 Port 10/100 Value Switch	27.99
24 Port 10/100 Value Switch	44.99
48 Port 10/100 Value Switch	86.49

FEATURES:

- Supports 10/100M auto-detect half/full duplex
- Ideal for small installations or desktop use

Internet Express Link **8003**

Gigabit Switches



DESCRIPTION

DESCRIPTION	PRICE (£)
5 Port Gigabit Value Switch	24.99
8 Port Gigabit Value Switch	30.99
16 Port Gigabit Value Switch	95.00
24 Port Gigabit Value Switch	130.00

FEATURES:

- Rackmount (Brackets) supplied
- Full/Half Duplex operation

Internet Express Link **8002**

Media Converters



DESCRIPTION

DESCRIPTION	PRICE (£)
SC 10/100 Multimode Fibre Media Converter	45.00
SC 10/100 Singlemode Fibre Media Converter	137.00
SC Gigabit Multimode Media Converter	95.00

FEATURES:

- TP port supports auto-negotiation for automatic speed selection

Internet Express Link **8101**

Value SFP Modules



DESCRIPTION

DESCRIPTION	PRICE (£)
Value Multimode SFP Module	59.99

FEATURES:

- SFP Modules compatible with all switches

Internet Express Link **8005**

Index:

Active Equipment	41-47	Crimp Tools	26	KVM Extenders	36	Power Leads	34	Telephone Extensions Leads	13
APC	38-39	CW1128 Cable	11	KVM Switches	36-37	Pre-Terminated Fibre	10	Termination Strips	12
Austin Hughes	37	CW1308 Cable	11	Line Adapters	13	Printer - Parallel	33	Testers	26-27
Back Boxes	13, 28, 31	Dado Trunking	29	Line Jack Units	13	Printer - USB	39	TFT Screens	37
Belkin KVM	36	Data Cabinets	18-20	Line Splitters	32	Printer Leads	33	Tools	26-27
Boots	32	Desktop KVM Switches	36	Mains Extensions	34	PS2 Leads	33	Trunking	28-29
Bulk Cabling	14-17	Environmental Monitoring	25, 41	Mains/Power	34	Punch Down Tool	26	UPS	38-39
Buffalo	40	Faceplates	15-17	Media Converters	40	Rackmount KVM Switches	36-37	USB	37
Cabinet Accessories	19, 23-25	Fan Units	24	Mode Conditioning Leads	10	ReadyNAS	40, 45	USB Accessories	37
Cabinet Shelving	19, 24	Fibre Cable	6-10	Modem Leads	33	RJ45 Patch Panels	14, 16-17	USB Adapters	37
Cabinets and Enclosures	18-24	Fibre Optic Cabling	6-10	Modules	15-17	Server Cabinets	20-23	USB Controllers	37
Cable	14-17	Fibre Patch Panels	10	Multicore Fibre Cable	10	Singlemode Patch Leads	8-9	USB Hubs	37
Cable Ties	30	Fiat Modular Telephone Cable	11	Multimode Patch Leads	6-7	Solid Cable	14, 16-17	USB Leads	37
Cable Tackers	30	Fiat Pack Cabinets	20-21	NAS	40	Sound Proof Cabinets	20	Value Switches	41
Cat5e Patch Leads	4	Floor Boxes	28-29	Netgear	44-47	Stripping Tools	26	Video	37
Cat6 Patch Leads	5	Floor Standing Data Cabinets	20, 22	Network Accessories	26-32	Structured Cabling	11-17	Video Splitters	37
Cisco Cables	33	Floor Standing Server Cabinets	20-23	Office Style Cabinets	20	Sub Racks	12	Voice Converters	13
Cisco Leads	33	HP	42-43	Panel Accessories	14, 24	Surge Protection Units	22, 35	Voice Modules	15
Computer Accessories	33-40	IEC Leads	34	Patching Cabinets	18-19	SVGA	37	Voice Panels	14
Connection Boxes	12	Installation Essentials	30-31	Patch Cable	15	SVGA Leads	37	Wall Brackets	18
Connectors	32	Installation Kits	26	Patch Panels	14, 16-17	Switches	40-43	Wall Mounted Cabinets	18-19
Connectors/Boots	32	Intelligent Cabinets	22	PDU's	23-24	Telephone	11-13	Wireless	46-47
Console Drawers	37	Jumper Wire	11	Plinths	24	Telephone Adapters	13		
Copper Cabling	14-17	KVM	36-37	Plug Sockets	34	Telephone Cable	11		
Couplers	32	KVM Cables	36	Power Extension Leads	34	Telephone Equipment	11-13		

Our standard terms and conditions of sale can be found on <http://www.comms-express.com/info/terms-and-conditions/>. Alternatively, please telephone, fax or e-mail for details.

All prices quoted are excluding VAT unless otherwise stated. All delivery prices quoted are to UK mainland only. Surcharges may apply for cabinet deliveries to Scotland, Wales, non UK Mainland and Northern & Western England - please call for details. Offers and Prices are correct at time of going to print and are subject to change without prior notice.

Free gifts are limited to one per customer, for goods ordered at full list price in one order. The Value of Netgear, 3Com, Cisco, HP, APC, KVM, Buffalo, Quantum, Fujitsu Siemens, Test Equipment and TFT Products are excluded from this promotion. This promotion can be withdrawn at any time without notice. For full condition, please visit <http://www.comms-express.com/info/free-gifts/>

All pictures are used for illustrative purposes only. Features and specifications are subject to change without prior notice.

© Copyright © Comms Express Limited 2010. All rights reserved. No part of this publication may be reproduced or transmitted, in any form or by any means, or stored in any retrieval system of any nature without the prior written permission of Comms Express Limited, except in accordance with the Copyright, Designs and Patents Act 1988 or under the terms of a licence issued by the Copyright Licensing Agency. All trademarks acknowledged."

NETGEAR® dedication to education

NETGEAR provides a wide range of networking solutions that are ideal for schools, colleges and universities.

Whether you work in a single building or on a multi-site campus, the NETGEAR range gives you all the choice you need to meet your individual requirements and budget.



Benefits include:

- **Discount for all education customers**
- **Industry-leading lifetime hardware warranty** on every ProSafe® product
- **FREE site survey** to help guide your choice of network solution

FOR DETAILS, CALL **0845 2000 256**

Please Pass to
Your I.T. Buyer

