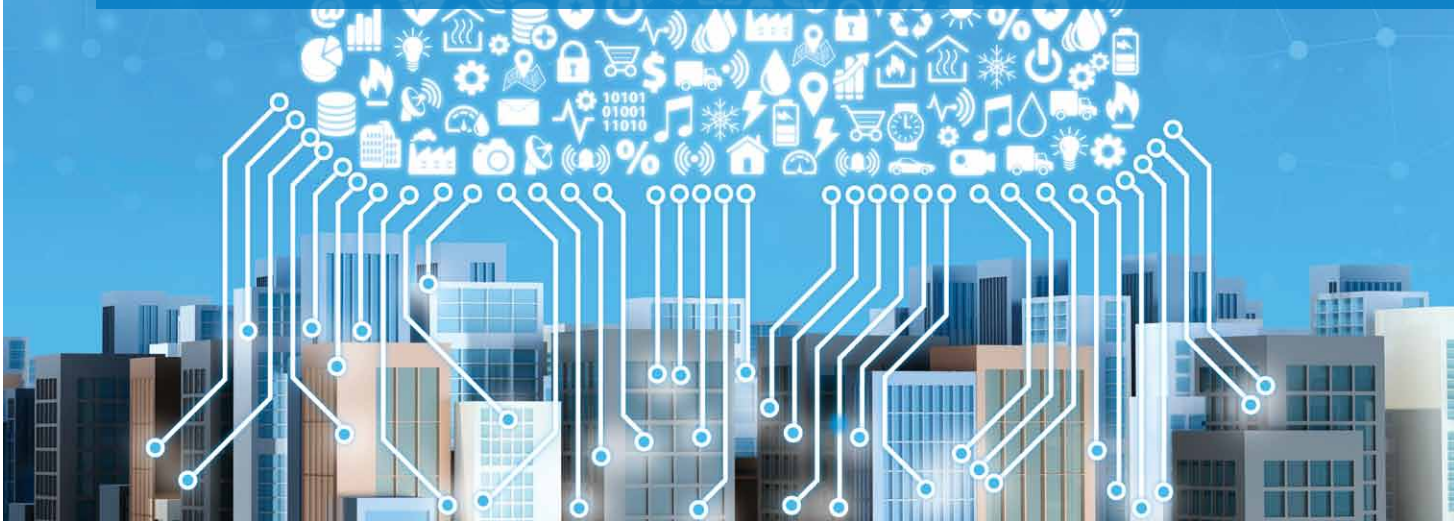


## Solutions for edge computing and IoT infrastructure



# Protect your Edge/IoT infrastructure

### What are IoT infrastructure specifics?

- Real time insight
- Localized signal emission to be adapted to network constraints
- Compact cabinets integration
- Near the source computing solutions
- Data aggregation and filtering
- Cloud integration

### Why adapted power protection is fundamental to support IoT infrastructure equipments?

- To secure data transmission along the processing chain, from the emitting device up to the cloud
- To avoid any data loss causing critical issues
- To protect infrastructure equipments from electrical perturbation
- To give the ability to monitor and manage network and compute equipments, including virtual environment

### Our advice:

- **Eaton 5PX / 9PX UPS** ranges provide a simple, reliable and affordable power protection solution to edge computing equipments
- The large power rating span of **Eaton 5PX / 9PX UPS** ranges permit to fit perfectly with IoT environment power needs (servers, micro data center, gateways, captors etc...)
- Associated with Eaton software solution, **Eaton 5PX / 9PX UPS** ranges will be easily recognized and integrated into any communication environment, including virtualization (Netpack versions are available, providing UPS + Network card in a single part number)
- Power consumption is optimized thanks to **Eaton 5PX / 9PX UPS** high efficiency. Energy metering feature permits a perfect control of loads powering
- With a versatile Rack/Tower form factor **Eaton 5PX / 9PX UPS** offers the most flexible and compact protection solutions.

**Eaton® Intelligent Power® Manager** software (IPM) integrates seamlessly with your power hardware to provide unparalleled business continuity capabilities. It manages all network connected power infrastructure devices. At Eaton, we have partnered with top IT vendors in the industry to provide customers a more unified, resilient IT architecture.



Your data is protected, your equipments are safe, up and running 24/7.



Powering Business Worldwide

[www.eaton.eu/intelligentpower](http://www.eaton.eu/intelligentpower)

## Mid-range server set-up

- Typical application: Healthcare infrastructure, road traffic control, goods tracking
- Typical power usage: 700W to 1500W
- Recommended UPS: **Eaton 5PX**  
[www.eaton.eu/5PX](http://www.eaton.eu/5PX)



## High-range server set-up

- Typical application: Industrial production, smart cities or buildings
- Typical power usage: 2000W +
- Recommended UPS: **Eaton 9PX**  
[www.eaton.eu/9PX](http://www.eaton.eu/9PX)



Changes to the products, to the information contained in this document, and to prices are reserved; so are errors and omissions. Only order confirmations and technical documentation by Eaton is binding. Photos and pictures also do not warrant a specific layout or functionality. Their use in whatever form is subject to prior approval by Eaton. The same applies to Trademarks (especially Eaton, Moeller, and Cutler-Hammer). The Terms and Conditions of Eaton apply, as referenced on Eaton Internet pages and Eaton order confirmations.

**Eaton**  
EMEA Headquarters  
Route de la Longeraie 7  
1110 Morges, Switzerland  
Eaton.eu

© 2017 Eaton  
All Rights Reserved  
Publication No. PA153006EN / CSSC - 648  
September 2017

Eaton is a registered trademark.  
All other trademarks are property  
of their respective owners.